

FECABASKET • 2026 SEASON

STATISTICAL REPORT

YOUZOU ELITE ONE WOMEN

2026 SEASON

In-depth analysis across 7 teams • 42 games • 14 matchdays
Advanced metrics • Awards • Player profiles • Original indices

Technical Direction • L. TSOUNGUI



CHAMPIONS

FAP

F.A.P. BASKETBALL

12W — 0L • +464

PERFECT SEASON



Foreword — A word from the DTN

Why this report, and how it was built



The 2026 season will be remembered as the first season fully documented Elite One Women campaign.

Beyond FAP's 12-0, this league tells seven distinct stories — and that is precisely what this report sets out to capture.

— **FECABASKET Technical Direction**

01 Data source

Game-by-game reconstruction from official FIBA box scores — 42 games, 14 matchdays played between January and April 2026.

02 Methodology

Application of global standards: Four Factors, per-possession metrics, Game Score, composite indices adapted to the FIBA 4×10 format.

03 Statistical rigor

, FIBA norms as benchmarks.

04 Narrative ambition

Combining Anglo-Saxon analytical rigor with a culturally Cameroonian reading — at the very moment when the Indomitable Lionesses are forging a new generation.

The season in 5 numbers

A statistical snapshot of a historic season



HEADLINE

12-0

THE PERFECT SEASON

First documented perfect season in Elite One Women • F.A.P. Basketball completes the campaign without a single loss, with a total differential of +464 points.

+464

FAP record differential

The highest in the league

29

Individual scoring record

B. DRAME (FAP) vs OVE • MD12

20

Single-game rebounding record

A.V. MADJOU MOUAFO (ONY) • MD13

EV 42

Top FIBA evaluation

D.P. EMEDIE (FAP) • 25 PTS/19 REB MD4

Story of the Season — The 7 main narratives

The seven storylines that defined the 2026 season



1

FAP's invincibility

12 wins in 12 games. An offensive engine averaging 84.8 PPG, a suffocating defense (29-STL record in MD7), an untouchable Emedie/Drame/Kipo trio. No opponent led for more than 60 cumulative minutes against them.

2

OVE, the No. 1 challenger

Runner-up (10W-2L) with a record team FG% of 86.7% in MD9. Just two losses, both to FAP. Confirmed in MD14 against DBF (71-58).

3

DBF clings to bronze

7W-5L, -4 differential: podium preserved despite the final loss to OVE. Mbongnkoumou (28 PTS/MD8) and captain Djuissie Youta (19 PTS) as cornerstones.

4

ASK, the late-season revelation

6W-6L: spectacular run from MD9-MD13 (3 to 6 wins). Fourth place built on rediscovered resolve and a productive bench (34 PTS vs UDL in MD6).

5

MZN reclaims fifth place

4W-8L: late surge in MD12-MD14 driven by Messina Tchoungui (20/10/6 AST/5 STL in MD12) and captain Elongo. A team finishing strong.

6

ONLY climbs out of the red zone

2W-10L: two late wins (MD11 vs OVE, MD13 vs UDL) to leapfrog UDL on differential. Madjou Mouafo set the season rebounding record (20 in MD13).

7

UDL, the rebuild season

1W-11L: a single win in MD1, then collapse. 36 TO in MD14 (negative record), depleted roster down the stretch. A full rebuild is required.

"A multi-speed season: an untouchable summit (FAP), a vibrant midtable, a tail that must be rebuilt. The hierarchy is clear, but the stories are many."

Final standings — 2026 Season

42 games played • 14 matchdays • Reconstructed from official FIBA box scores



#	Code	Team	W	L	Diff.	Win %	Status
1	FAP	F.A.P. BASKETBALL	12	0	+464	100 %	🏆 CHAMPIONS — Perfect season
2	OVE	OVERDOSE UP STATION	10	2	+194	83 %	RUNNERS-UP
3	DBF	DANIEL BATTISTON F.	7	5	-4	58 %	BRONZE — Podium retained
4	ASK	AS KEEP THE DREAM	6	6	-114	50 %	Strong late-season surge
5	MZN	MOUNGO ZONE WOMEN	4	8	-199	33 %	Finishes strong, position secured
6	ONY	ONYX BASKETBALL ACADEMY	2	10	-164	17 %	Edges UDL on differential
7	UDL	UNIVERSITÉ DE DOUALA	1	11	-177	8 %	Bottom of the table — rebuild season

TOP offense
FAP — 84.8 PPG

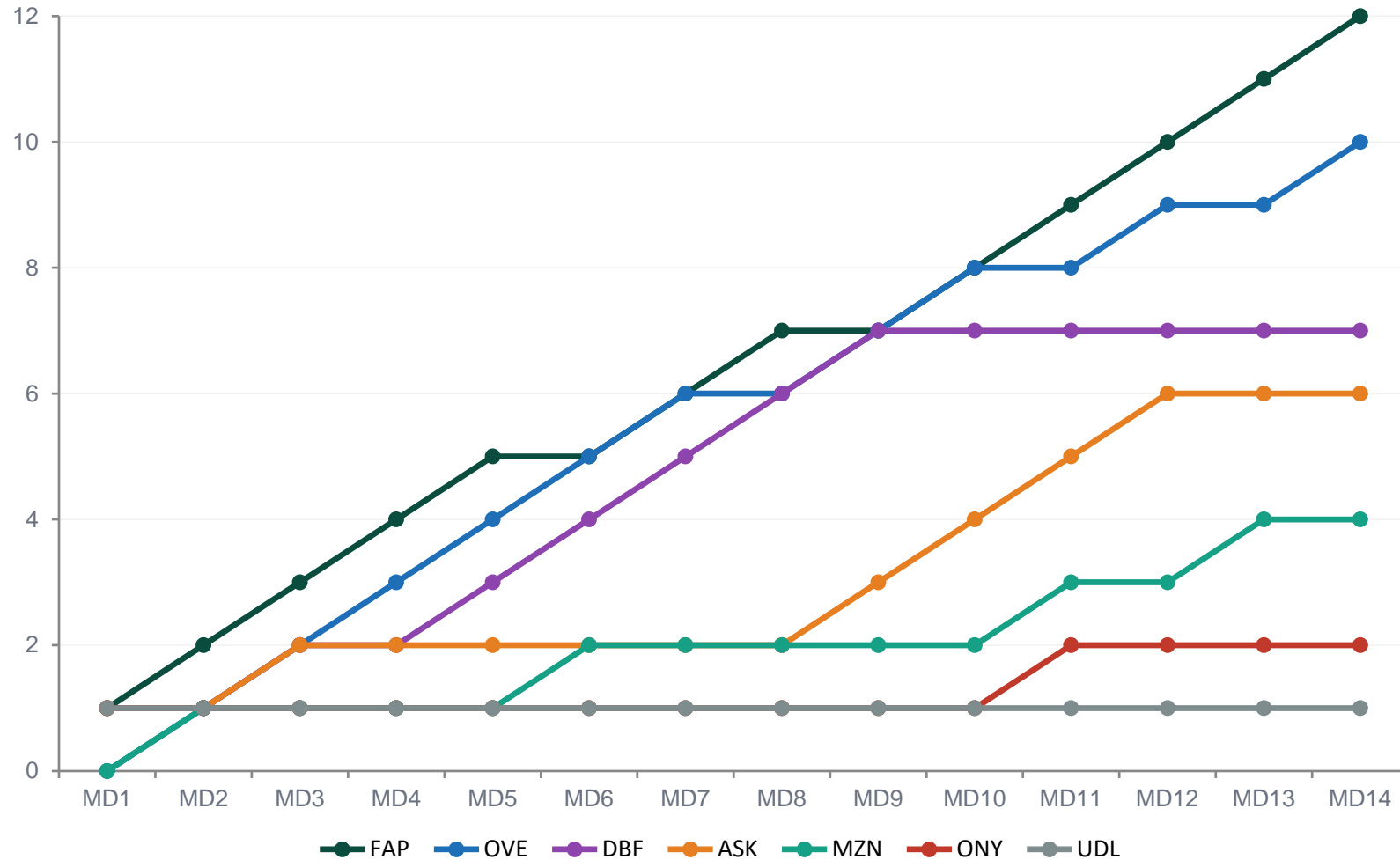
Best defense
FAP — record 29 STL (MD7)

Worst record
UDL — 1W-11L, 36 TO in MD14

Positive differential
FAP, OVE only (2/7)

Cumulative wins trajectory MD1 → MD14

Visual reading of each team's season dynamics



TRAJECTORY READING

- FAP** Uninterrupted linear ascent — 12 win plateaus without a single break.
- OVE** Steady climb, two brief dips (MD4, MD12) caused solely by losses to FAP.
- DBF** Climb halted at MD9 — 5-matchday plateau without progress.
- ASK** Late-season surge MD9-MD13 (3 to 6 wins) — the revelation of the run-in.
- MZN** Fifth place earned through an MD12-MD14 acceleration.
- ONY** Two wins against UDL (MD1 opener, MD13 spark) enough to escape the red zone.
- UDL** A single win (MD1) over 14 matchdays — a season requiring full rebuild.

Tier list — The season's hierarchy

Analytical classification inspired by *The Ringer* / *Bleacher Report* model



S	SOLE CONTENDER <i>Perfect season. In a class of its own. The league benchmark.</i>	FAP	
A	CHALLENGERS <i>Genuine alternative at the top. The only side to push FAP to its limits.</i>	OVE	
B	MIDDLE TIER <i>Balanced record, podium within reach. Tight race for bronze down to the wire.</i>	DBF	ASK
C	PLAY-IN ZONE <i>Trending up. Strong season finish. Foundation for 2027.</i>	MZN	
D	REBUILD <i>Seasons to draw the lessons. Full rebuild — tactical refoundation required.</i>	ONY	UDL



F.A.P. BASKETBALL — The perfect season

12-0

WINS — LOSSES

+464

TOTAL DIFFERENTIAL

84.8

POINTS / GAME

11 ✓

GAMES WON BY +20

REPORT CARD BY DIMENSION

Offense

A+

Defense

A+

Rebounding

A

Discipline

B+

Clutch

A

Depth

A+

FAP'S 3 SEASON PILLARS

B. DRAME

Top scorer

29 PTS vs OVE MD12 • 5/9 from three

D.P. EMEDIE

Dominant center

21 PTS/21 REB MD12 • EV 42 MD4

G.K. KIPO

Point guard

23 PTS/EV 25 MD1 • Tempo control

BEST GAME

FAP 76-19 ONY (MD3) — +57 dominance, season-record margin

TOUGHEST WIN

FAP 87-78 OVE (MD12) — offensive duel, win sealed in Q4 (28-21)

WHAT WE LEARNED

Record depth: 4 different top scorers across the season

LOOKING FORWARD

Defending the title against challengers who have seen the cracks



OVE — OVERDOSE UP STATION

10-2

RECORD W — L

+194

DIFFERENTIAL

~76

POINTS / GAME

Explosive bench

IDENTITY

REPORT CARD BY DIMENSION

Offense

A

Defense

A-

Rebounding

A+

Discipline

B

Clutch

B+

Depth

A+

TEAM LEADERS

M. GUIOLOBO

Explosive forward

26 PTS/EV 23 MD6 • 80% FG MD14

C. WILLIAMS AMAYABA

Complete scorer

23 PTS MVP MD7 • 6 AST MD5

S. EKAH / S.D. EBEN

Glue players

Ekah: 15 REB/7 STL EV 26 MD5

BEST GAME

Season FG% record: 86.7% team mark in MD9 vs MZN — every player ≥71%

KEY MOMENT

MD12 loss to FAP (78-87) despite 26 OREB and 21 second-chance PTS — finishing fell short

WHAT WE LEARNED

League's most productive bench: 38 PTS vs FAP, 39 PTS vs ASK — a genuine alternative at the top

LOOKING FORWARD

Need a true perimeter finisher — Achilles heel against FAP



DBF — DANIEL BATTISTON FOUNDATION

7-5

RECORD W — L

-4

DIFFERENTIAL

~62

POINTS / GAME

Bronze by a whisker

IDENTITY

REPORT CARD BY DIMENSION

Offense

B+

Defense

B

Rebounding

B+

Discipline

B

Clutch

A-

Depth

B-

TEAM LEADERS

L-A. DJUISSIE YOUTA (C)

Captain — scorer

19 PTS MD1, 19 PTS MD14 • 4/11 from three

L. MBONGNKOU MOU

Clutch scorer

28 PTS on 73.3% in MD8 — benchmark

L.G. ONGMABOK BOTIFIN

Versatile

Consistent ≥10 REB • 6 AST MD14

BEST GAME

DBF 75-56 UDL (MD8) — Mbongnkoumou
28/73.3%, bench 14 PTS

KEY MOMENT

MD14 loss to OVE (58-71) — third place preserved
on just -4 differential

WHAT WE LEARNED

Razor-thin race for bronze against ASK (-4 vs -114
differential, but 7W vs 6W)

LOOKING FORWARD

Need a secondary creator to take pressure off
Mbongnkoumou and Djuissie



ASK — AS KEEP THE DREAM

6-6

RECORD W — L

-114

DIFFERENTIAL

~52

POINTS / GAME

Late revelation

IDENTITY

REPORT CARD BY DIMENSION

Offense

C+

Defense

B

Rebounding

B-

Discipline

B

Clutch

A-

Depth

A

TEAM LEADERS

M-A. KELLAMOWONA (C)

Point guard — clutch

17 PTS/6 REB/3 AST MD12 • 8 AST MD6

B. AYUK TAKANG

Sniper — defense

13 PTS/3 made threes MD10

E.M. DJOMZIE NENKAM

Game MVP MD13

13 PTS/7 REB/66.7% FG MD13

BEST GAME

MD12 comeback vs ONY — 20-11 Q4 after trailing for 25:25 minutes

KEY MOMENT

36 TO in MD7 vs FAP (negative record), 0/8 from three — offensive disaster

WHAT WE LEARNED

Spectacular surge MD9-MD13 (3 → 6 W) — solid mental foundation for 2027

LOOKING FORWARD

Urgent work needed on outside shooting (3PT) and primary offensive creation



MZN — MOUNGO ZONE WOMEN

4-8

RECORD W — L

-199

DIFFERENTIAL

~50

POINTS / GAME

Finishes strong

IDENTITY

REPORT CARD BY DIMENSION

Offense

C

Defense

B

Rebounding

B-

Discipline

C+

Clutch

B-

Depth

C

TEAM LEADERS

K.C. ELONGO (C)

Captain — leader

19 PTS/3 AST MD14, 17 PTS MD12

M-T. MESSINA TCHOUNGUI

Versatile center

20 PTS/10 REB/6 AST/5 STL EV 21 MD12

C.F. YAMSEU POLIWA

Defender — blocks

6-BLK record MD5 • 16 REB MD2

BEST GAME

MZN 67-49 UDL (MD12) — Messina 20/10/6
AST/5 STL, Yamseu 5 BLK

KEY MOMENT

MZN 65-55 ONY (MD14) — 5 lead changes, win
that secured fifth place

WHAT WE LEARNED

Elongo/Messina/Diarra trio can produce 50+ PTS
— foundation to structure an offense

LOOKING FORWARD

Cut the 25+ TO/game (paradox: 70.4% FG in MD9
yet still a loss)



ONY — ONYX BASKETBALL ACADEMY

2-10

RECORD W — L

-164

DIFFERENTIAL

~45

POINTS / GAME

Season to forget

IDENTITY

REPORT CARD BY DIMENSION

Offense

D

Defense

C-

Rebounding

A-

Discipline

D

Clutch

C

Depth

C

TEAM LEADERS

A.V. MADJOU MOUAFO

Dominant center

20 REB/4 BLK/EV 32 MD13 (season record)

H.H. MODENU TCHAMGOUE

Sniper

18 PTS MD1 • 4/11 from three MD14

KAPNANG TOUTZE

Workhorse

16 REB MD14 • 11 PTS MD14

BEST GAME

ONY 50-41 UDL (MD13) — Madjou Mouafo 20 REB / EV 32 (season records)

KEY MOMENT

11.1% FG in MD3, 43 TO negative record — offensive rock bottom

WHAT WE LEARNED

63 REB including 34 OREB in MD13 (season record) — rebounding activity despite inefficiency

LOOKING FORWARD

Rebuild shooting fundamentals (11% FG in some games) — massive project



UDL — UNIVERSITÉ DE DOUALA

1-11

RECORD W — L

-177

DIFFERENTIAL

~47

POINTS / GAME

Bottom of the table

IDENTITY

REPORT CARD BY DIMENSION

Offense

D

Defense

D+

Rebounding

C

Discipline

F

Clutch

D

Depth

F

TEAM LEADERS

S.R. NJIENAP KAMLA (C)

Battling captain

17 PTS/14 REB MD9 (DD in defeat)

M.L. NDOUMBE

Scorer

22 PTS MD6 • 16 PTS/40 min MD12

S. SANDJONG NDAKEP

Hot shooter

4/6 from three MD12

BEST GAME

UDL win MD4 vs MZN (53-47) — the season's only victory

KEY MOMENT

FAP 70-43 UDL MD14 — 36 TO negative record, 4 starters DNP, total capitulation

WHAT WE LEARNED

0 bench PTS in MD8 (absolute negative record) — roster and depth failing

LOOKING FORWARD

Urgent recruitment + rebuild of fundamentals + return of veteran starters

PROGRESSION CURVE — FAP

F.A.P. BASKETBALL



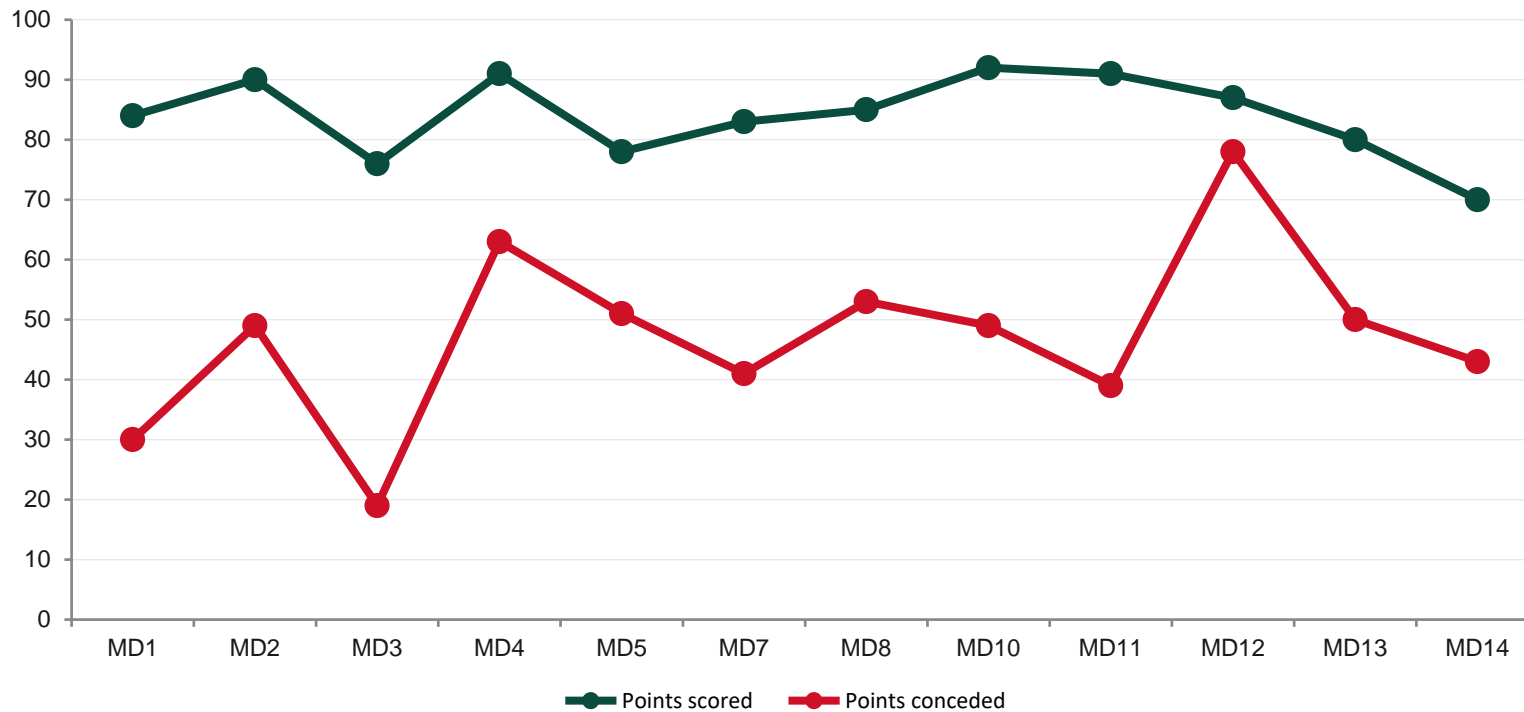
12W - 0L

RECORD

+464

DIFFERENTIAL

POINTS SCORED vs POINTS CONCEDED — per game



KEY NUMBERS — SEASON

84.8

PTS / game

46.1

PTS allowed

92

Offensive peak

19

Defensive lockdown

+57

Best game

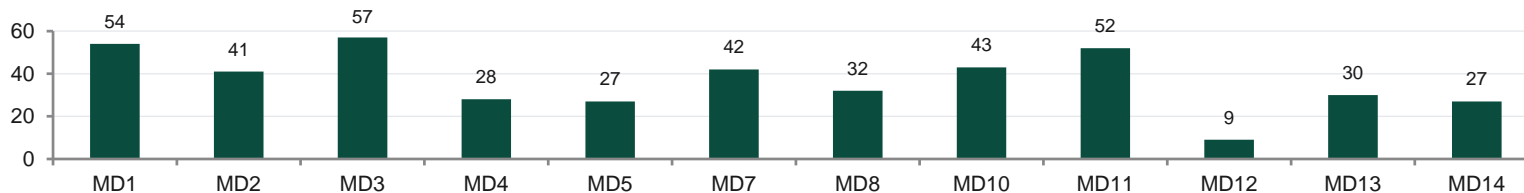
+9

Worst game

READING THE CURVE

- **Consistency:** 12 consecutive wins — perfect season
- **Offensive peak:** 92 PTS vs DBF (MD10), 91 PTS vs OVE (MD4) & ASK (MD11)
- **Defensive lockdown:** 19 PTS allowed vs ONLY (MD3) — season record
- **Benchmark game:** 87-78 vs OVE (MD12) — the only real test, handled in Q4

PER-GAME DIFFERENTIAL (W = green / L = red)



PROGRESSION CURVE — OVE

OVERDOSE UP STATION



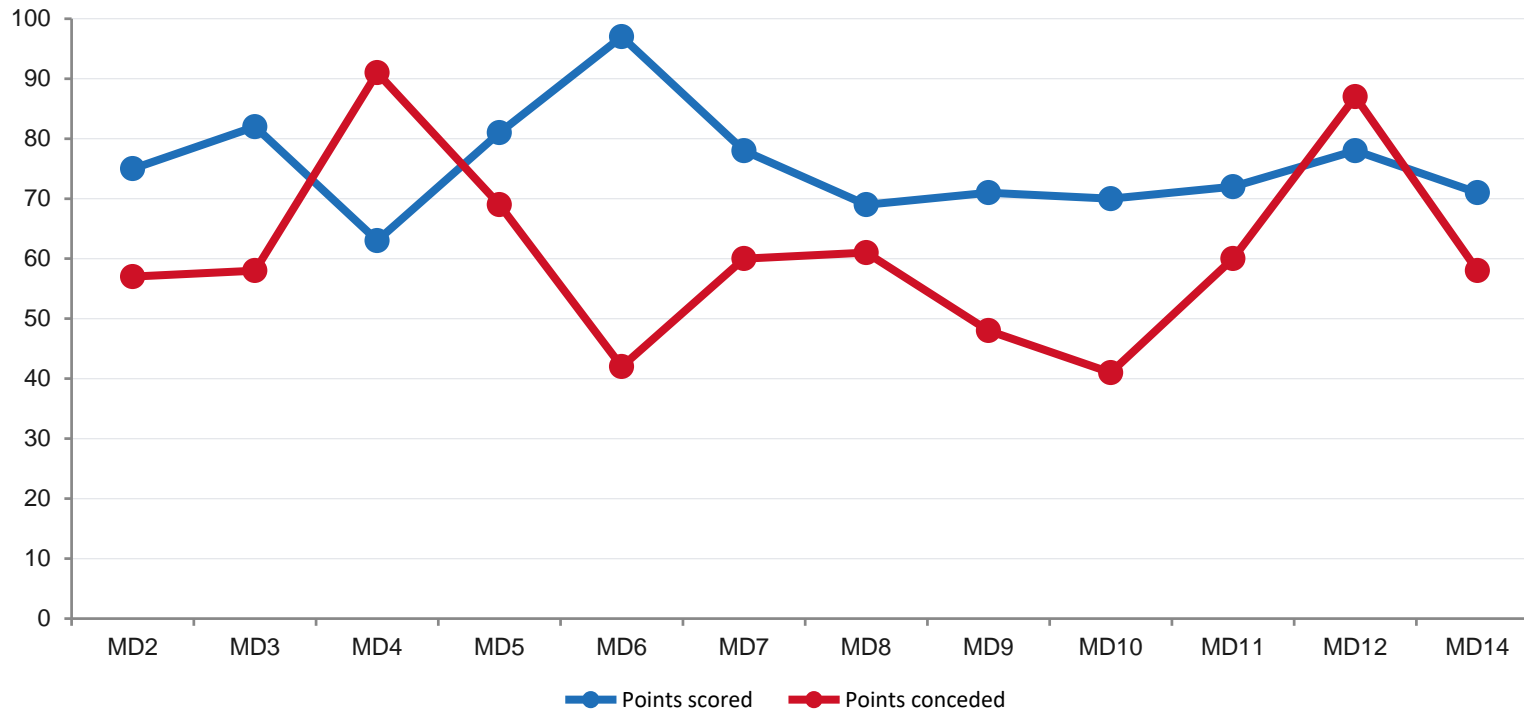
10W - 2L

RECORD

+194

DIFFERENTIAL

POINTS SCORED vs POINTS CONCEDED — per game



KEY NUMBERS — SEASON

75.2

PTS / game

59.0

PTS allowed

97

Offensive peak

41

Defensive lockdown

+55

Best game

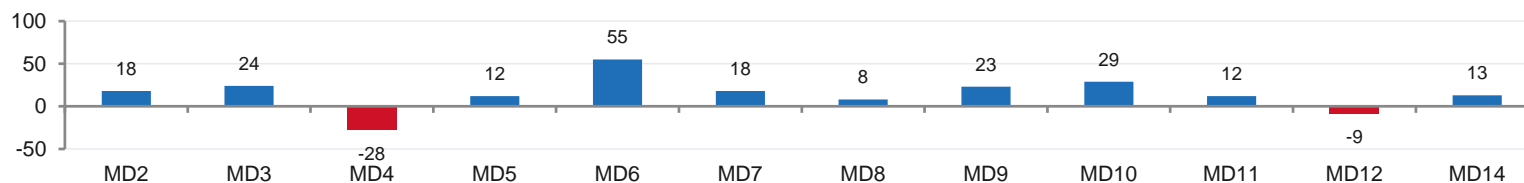
-28

Worst game

READING THE CURVE

- ▶ **Offensive peak:** 97 PTS vs MZN (MD6) — season scoring record
- ▶ **Signature performance:** 86.7% team FG in MD9 — historic
- ▶ **Identified limits:** Only losses against FAP: MD4 (-28) and MD12 (-9)
- ▶ **Consistency:** Bench averaging 32 PPG — best in the league

PER-GAME DIFFERENTIAL (W = green / L = red)



PROGRESSION CURVE — DBF

DANIEL BATTISTON FOUNDATION



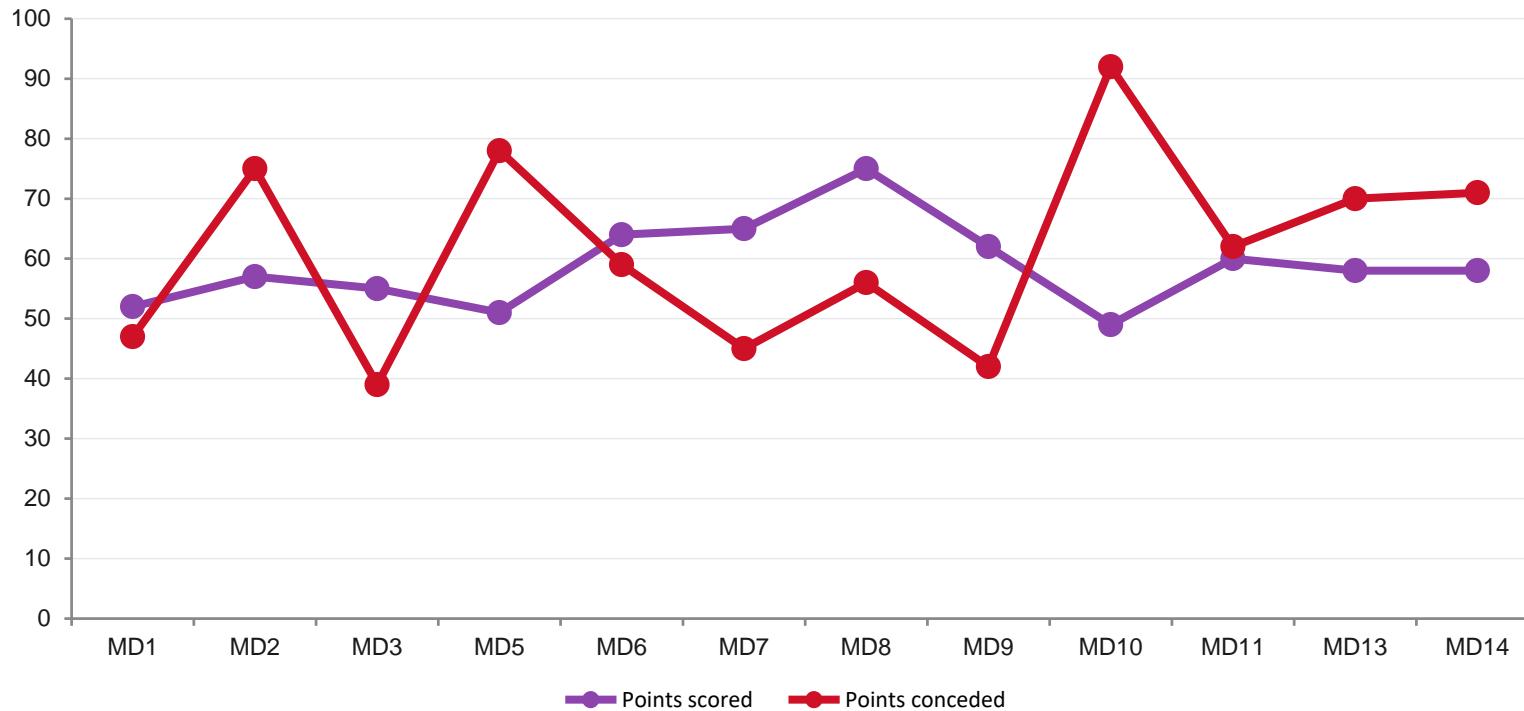
7W - 5L

RECORD

-4

DIFFERENTIAL

POINTS SCORED vs POINTS CONCEDED — per game



KEY NUMBERS — SEASON

57.6

PTS / game

57.9

PTS allowed

75

Offensive peak

39

Defensive lockdown

+20

Best game

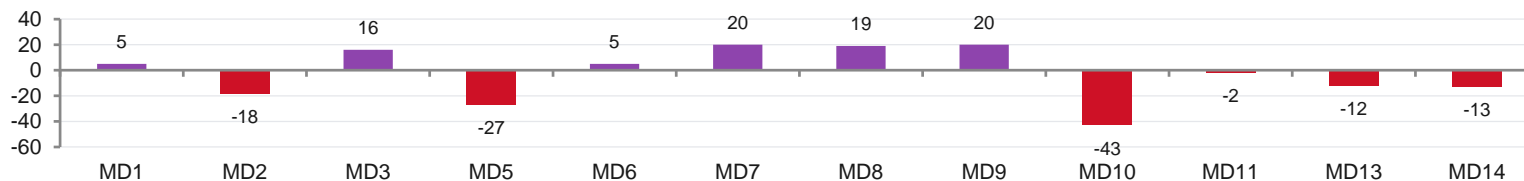
-43

Worst game

READING THE CURVE

- ▶ **Offensive peak:** 75-56 vs UDL (MD8) — Q4 explosion (31-7)
- ▶ **Scoring pillar:** Mbongnkoumou 28 PTS on 73.3% (MD8)
- ▶ **Weaknesses:** 5 losses including 49-92 vs FAP (MD10), tight losses mid-season
- ▶ **Bronze retained:** Near-zero differential (-4) despite 5 losses

PER-GAME DIFFERENTIAL (W = green / L = red)



PROGRESSION CURVE — ASK

AS KEEP THE DREAM



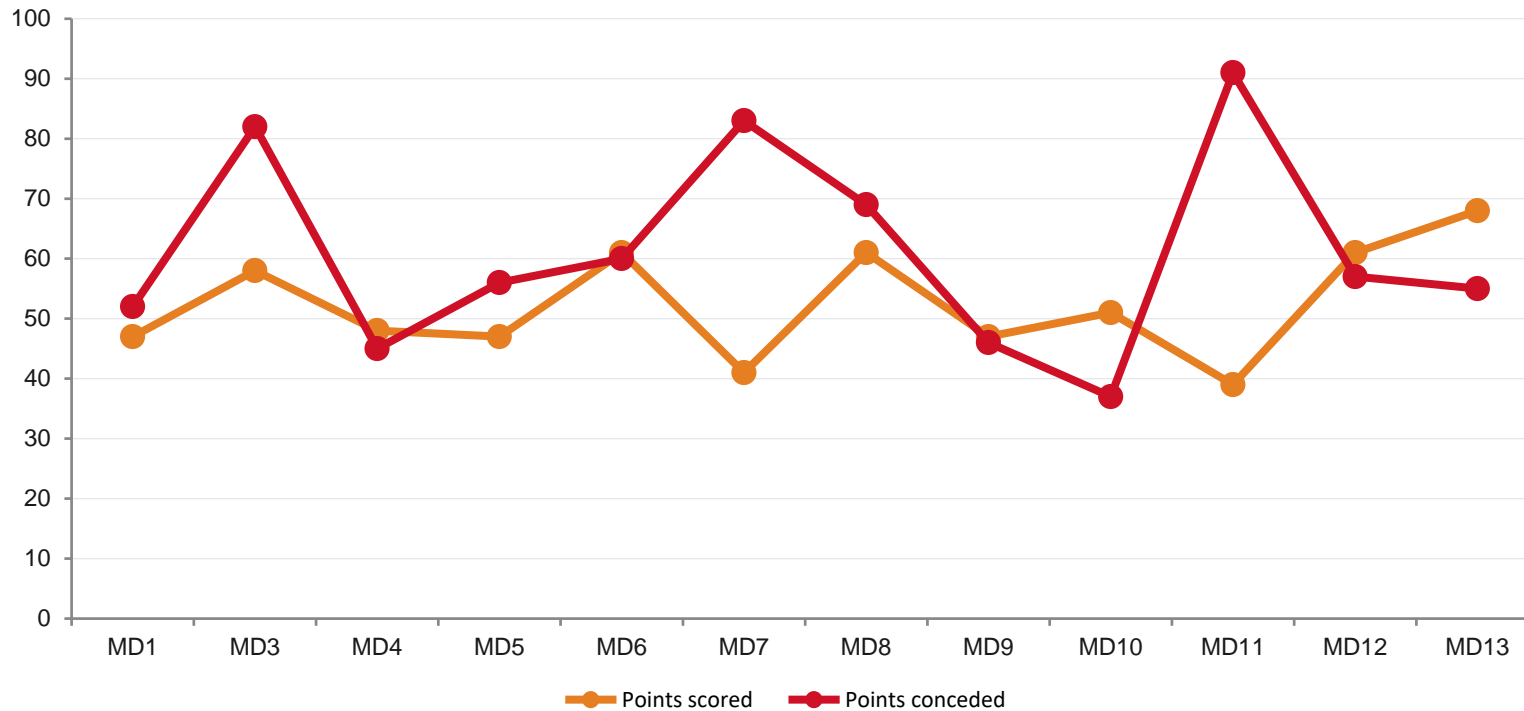
6W - 6L

RECORD

-114

DIFFERENTIAL

POINTS SCORED vs POINTS CONCEDED — per game



KEY NUMBERS — SEASON

50.8

PTS / game

60.3

PTS allowed

61

Offensive peak

37

Defensive lockdown

+14

Best game

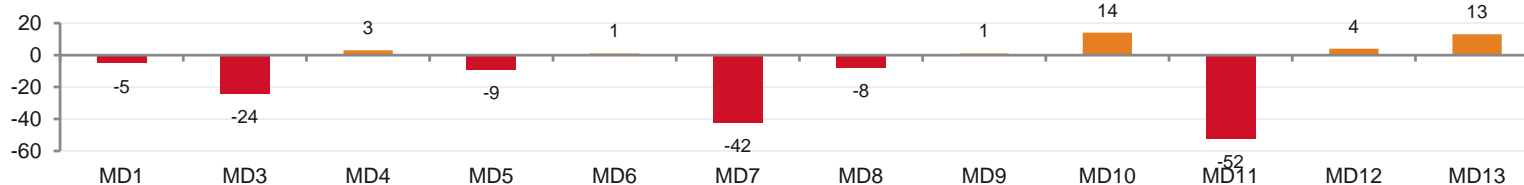
-52

Worst game

READING THE CURVE

- ▶ **V-shaped trajectory:** 3W in the first 8, 3W in the last 4 games
- ▶ **Thriller of the season:** 47-46 vs UDL (MD9) won by 1 point — season turning point
- ▶ **Worst performance:** 39-91 vs FAP (MD11) — 32 TO, negative record
- ▶ **Closing games:** 61-57 vs ONY (MD12) then 49-46 vs DBF (MD13) — building momentum

PER-GAME DIFFERENTIAL (W = green / L = red)



PROGRESSION CURVE — MZN

MOUNGO ZONE WOMEN



4W - 8L

RECORD

-199

DIFFERENTIAL

POINTS SCORED vs POINTS CONCEDED — per game



KEY NUMBERS — SEASON

46.7

PTS / game

63.2

PTS allowed

67

Offensive peak

40

Defensive lockdown

+18

Best game

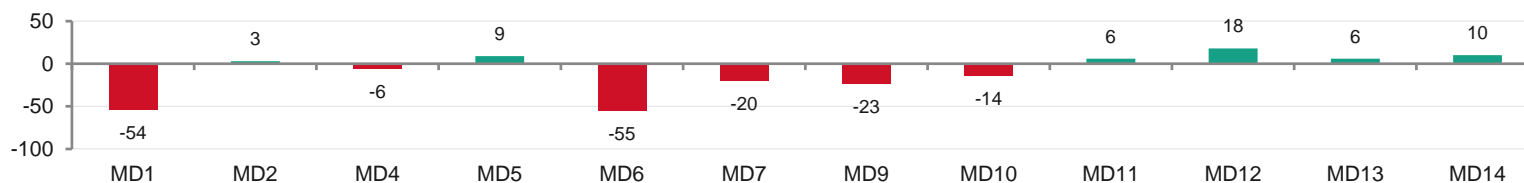
-55

Worst game

READING THE CURVE

- ▶ **Difficult start:** 5 losses in the first 7 games (-199 cumulative)
- ▶ **Recent peak:** 67-49 vs UDL (MD12), 65-55 vs ONY (MD14) — late surge
- ▶ **Signature pillar:** Messina Tchoungui 20/10/6 AST/5 STL (MD12) — 4-cat ≥5
- ▶ **Fifth place earned:** Secured through decisive MD12-MD14 wins

PER-GAME DIFFERENTIAL (W = green / L = red)



PROGRESSION CURVE — ONY

ONYX BASKETBALL ACADEMY



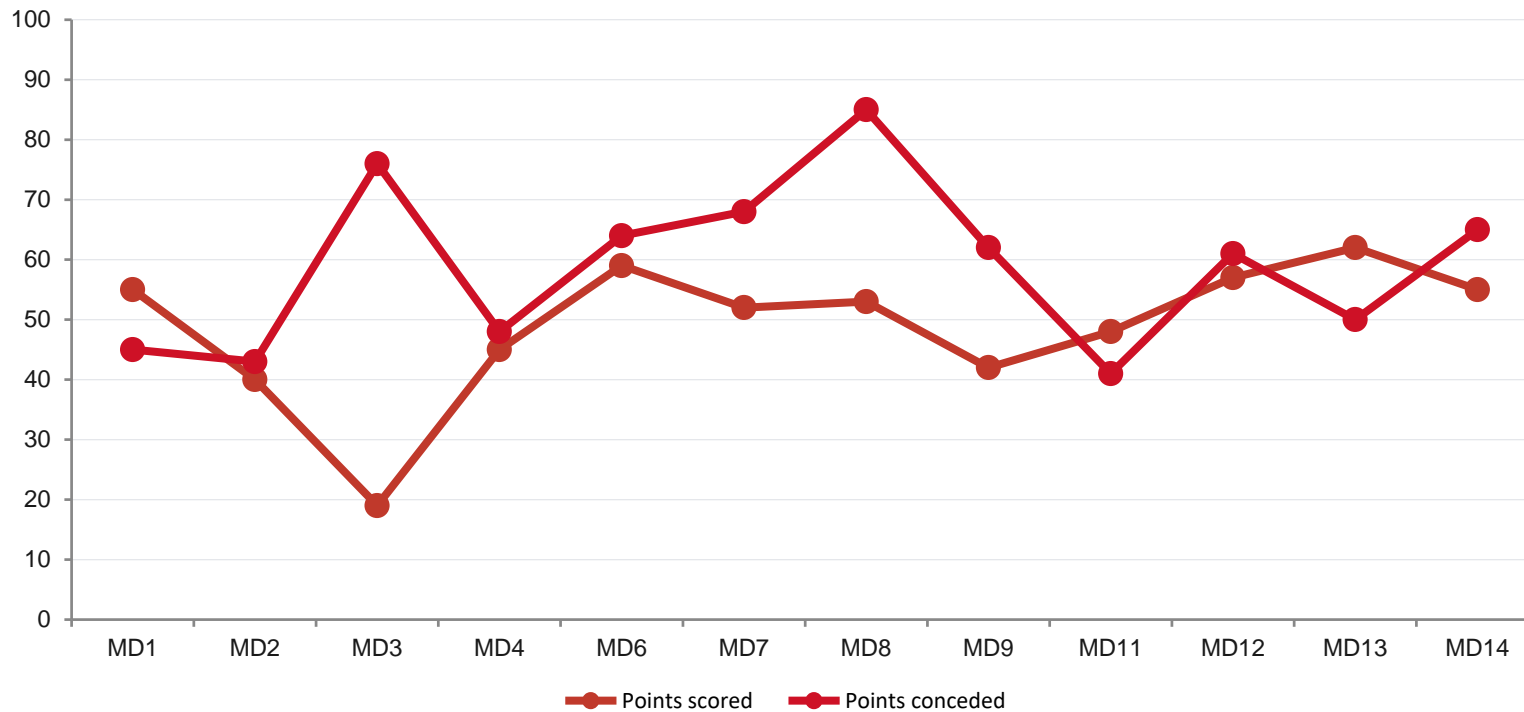
2W - 10L

RECORD

-164

DIFFERENTIAL

POINTS SCORED vs POINTS CONCEDED — per game



KEY NUMBERS — SEASON

47.6

PTS / game

61.2

PTS allowed

59

Offensive peak

41

Defensive lockdown

+10

Best game

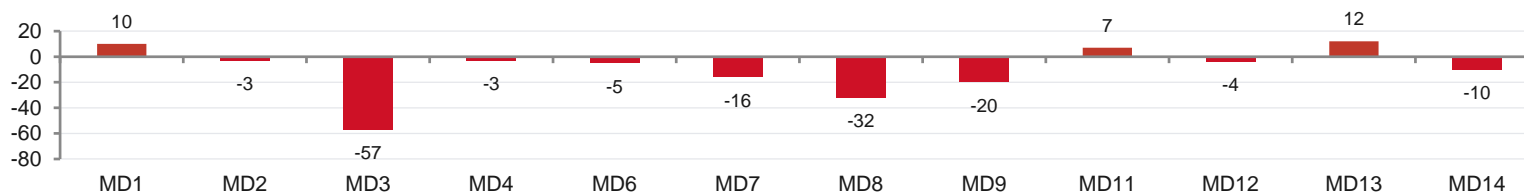
-57

Worst game

READING THE CURVE

- ▶ **Opening win:** 55-45 vs UDL (MD1) — reassuring start
- ▶ **Worst loss:** 19-76 vs FAP (MD3) — 5/26 in Q1
- ▶ **Late spark:** 50-41 vs UDL (MD13) — MVP Madjou Mouafo (20 REB / EV 32)
- ▶ **DPOY signature:** Madjou Mouafo: 18 REB + 4 BLK in MD14 despite the loss

PER-GAME DIFFERENTIAL (W = green / L = red)



PROGRESSION CURVE — UDL

UNIVERSITÉ DE DOUALA



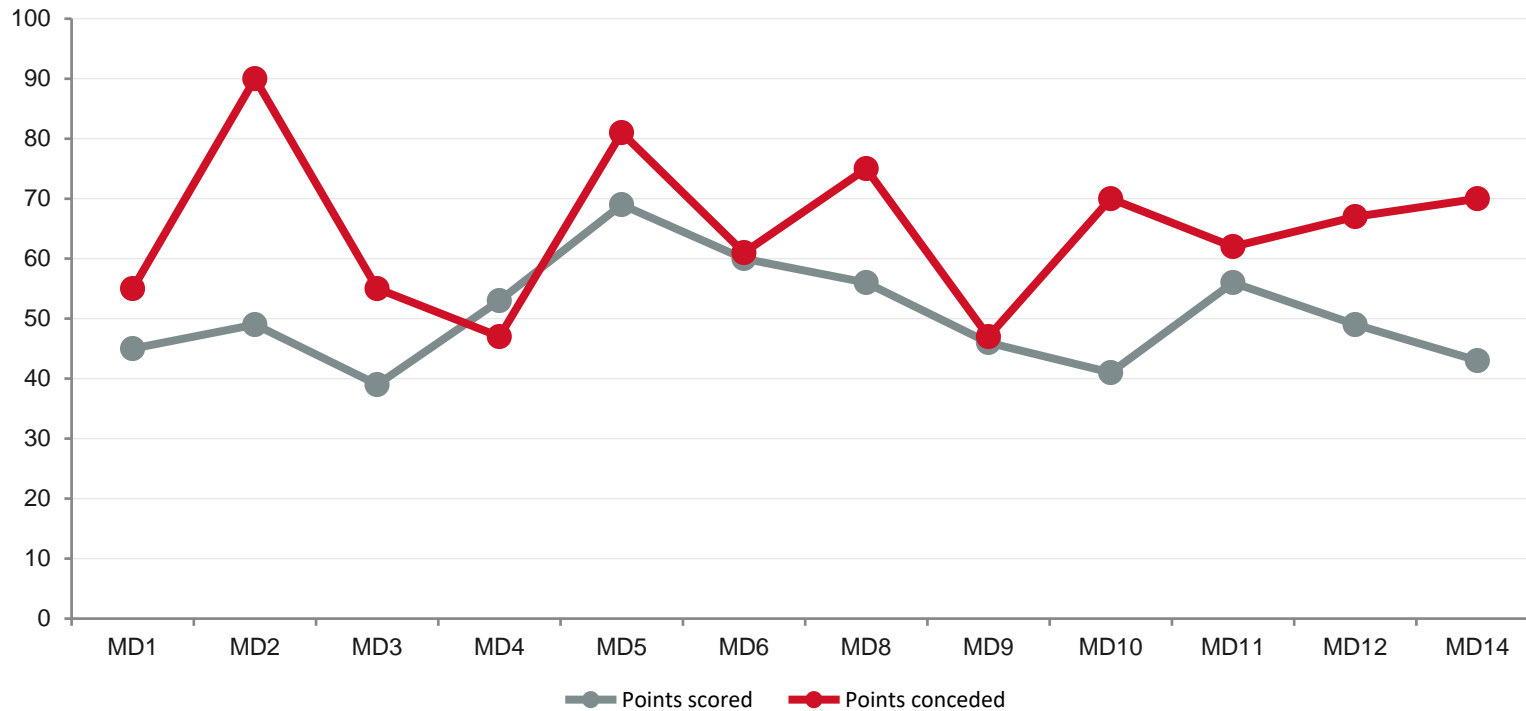
1W - 11L

RECORD

-177

DIFFERENTIAL

POINTS SCORED vs POINTS CONCEDED — per game



KEY NUMBERS — SEASON

49.2

PTS / game

64.0

PTS allowed

69

Offensive peak

47

Defensive lockdown

+6

Best game

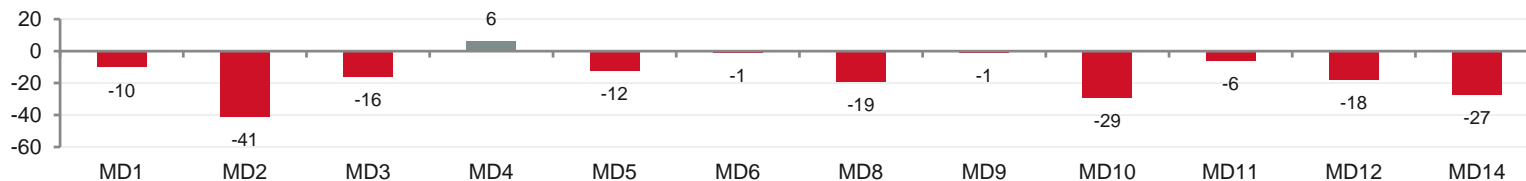
-41

Worst game

READING THE CURVE

- ▶ **Only win:** 53-47 vs MZN (MD4) — the season's unique moment
- ▶ **Lack of depth:** 0 bench PTS in MD8 — absolute negative record
- ▶ **Individual performance:** Njienap Kamla 17 PTS/14 REB (MD9) in a tight 47-46 loss
- ▶ **Rebuild required:** 36 TO vs FAP (MD14) — rebuild season

PER-GAME DIFFERENTIAL (W = green / L = red)



SECONDARY STATISTICS — FAP

F.A.P. BASKETBALL • 12W-OL • +464



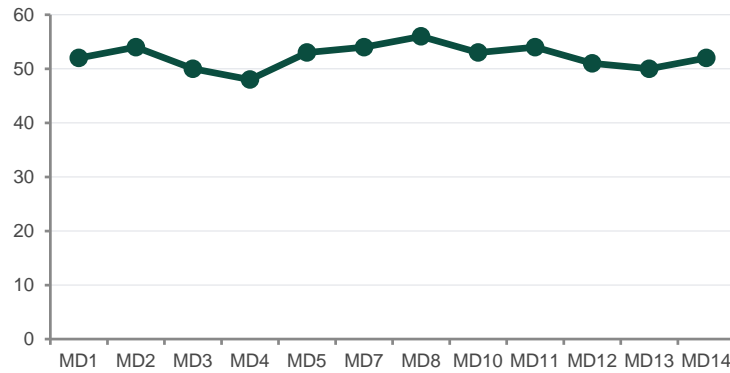
SIGNATURE
Signature stability — every metric balanced across 12 games

REBOUNDS / GAME

FIBA: 35-45

55.6

avg.

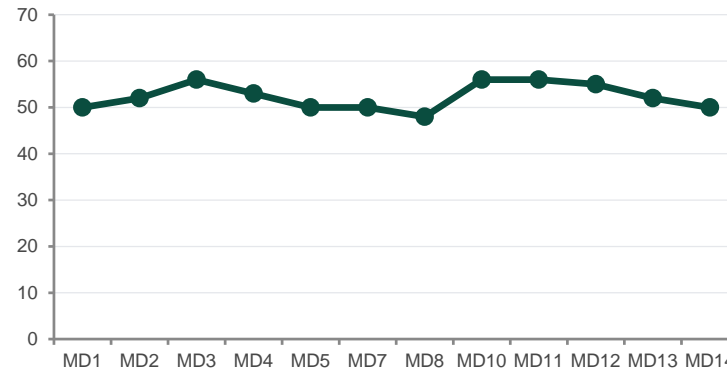


2-POINT FG %

FIBA: 45+

48%

avg.

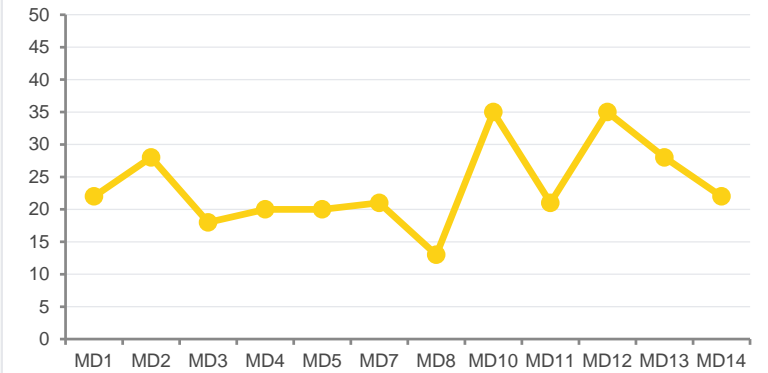


3-POINT FG %

FIBA: 33+

24%

avg.

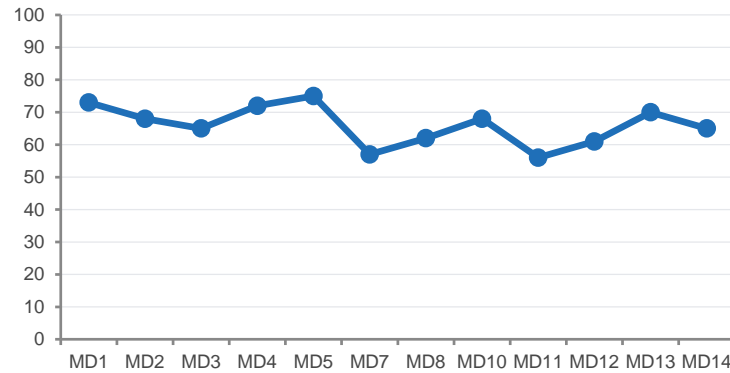


FREE THROW %

FIBA: 70+

64%

avg.

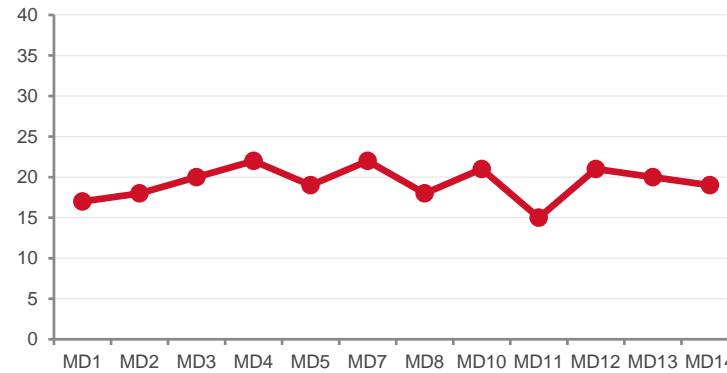


TURNOVERS / GAME

FIBA: 12-15

19.3

avg.

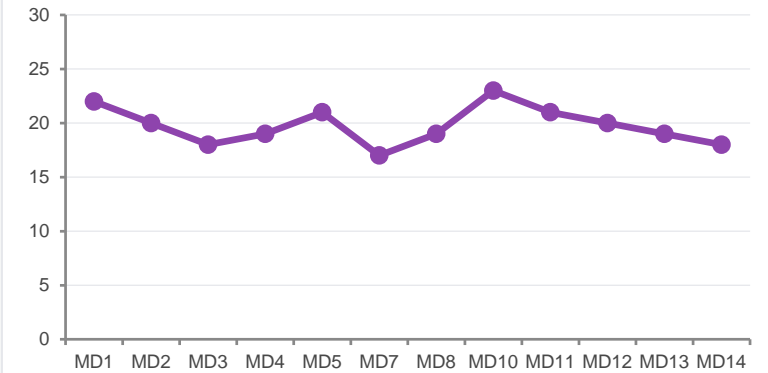


ASSISTS

FIBA: 18+

19.8

avg.



SECONDARY STATISTICS — OVE

OVERDOSE UP STATION • 10W-2L • +194



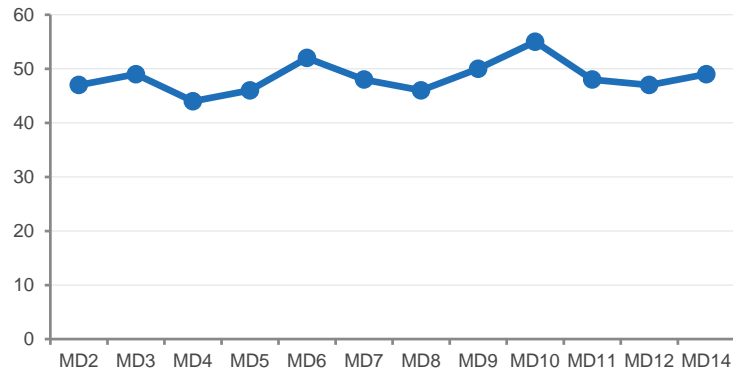
SIGNATURE
Historic peak in MD9 (86.7% FG) — quality defense, benchmark bench

REBOUNDS / GAME

48.4

FIBA: 35-45

avg.

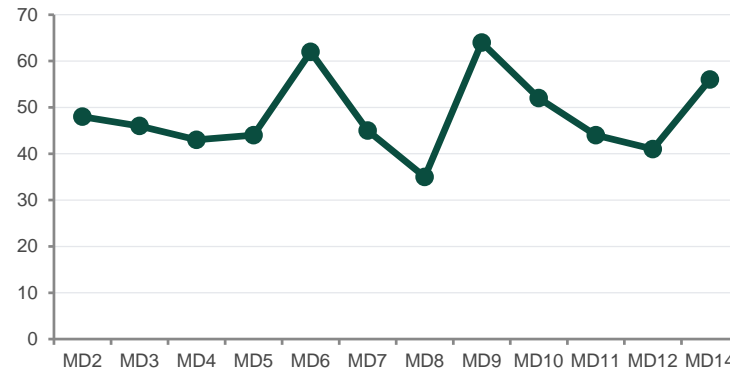


2-POINT FG %

41%

FIBA: 45+

avg.

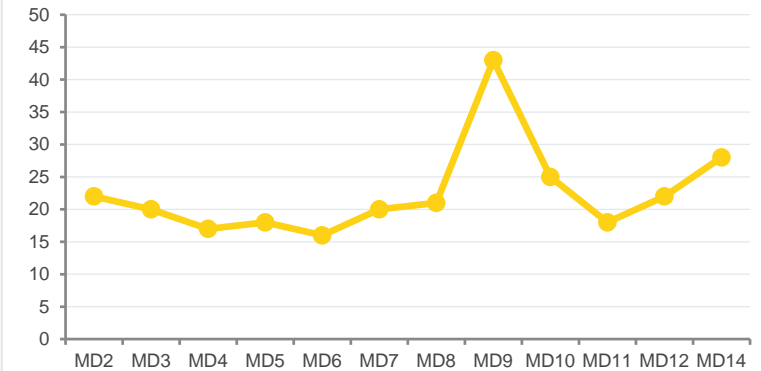


3-POINT FG %

23%

FIBA: 33+

avg.

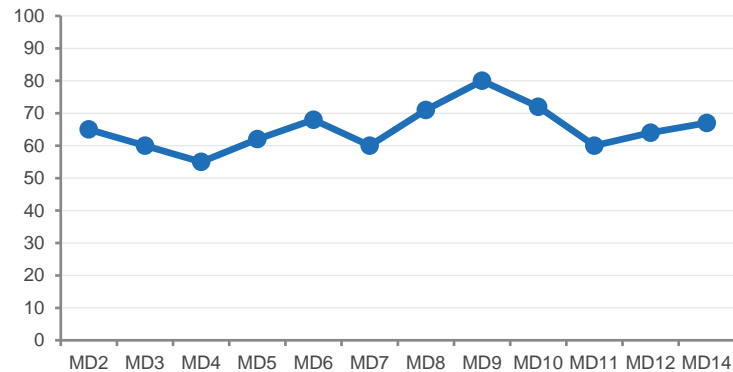


FREE THROW %

65%

FIBA: 70+

avg.

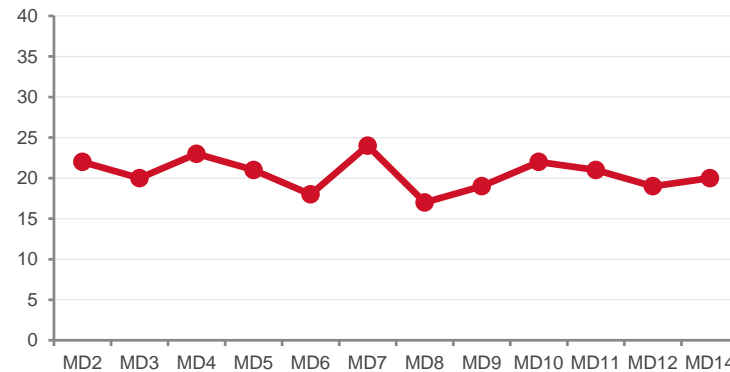


TURNOVERS / GAME

16.3

FIBA: 12-15

avg.

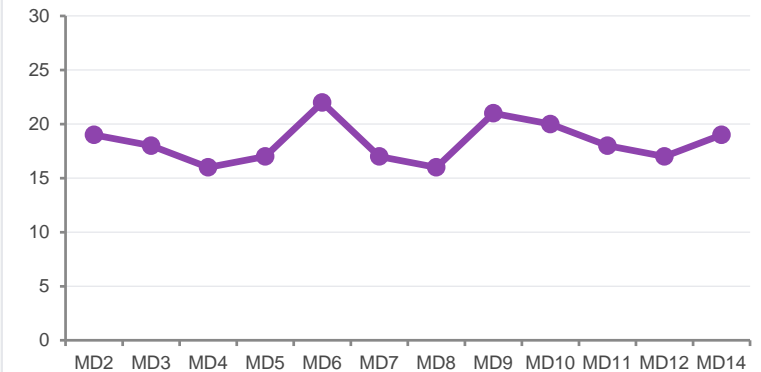


ASSISTS

14.9

FIBA: 18+

avg.



SECONDARY STATISTICS — DBF

DANIEL BATTISTON FOUNDATION • 7W-5L • -4



SIGNATURE

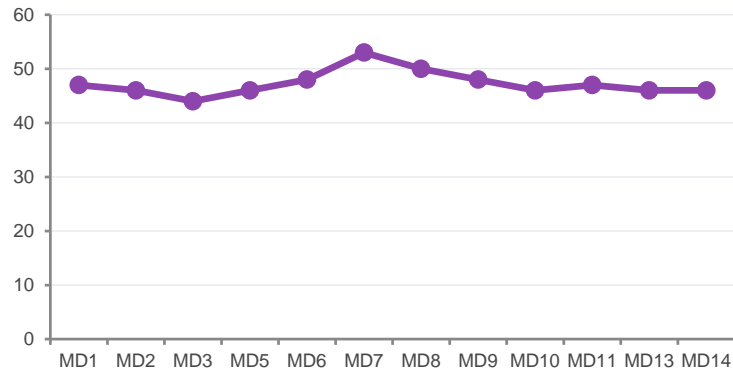
Three-point peak MD8 (34.4% = 11/32) — FT fragility, TO rising late

REBOUNDS / GAME

47.3

FIBA: 35-45

avg.

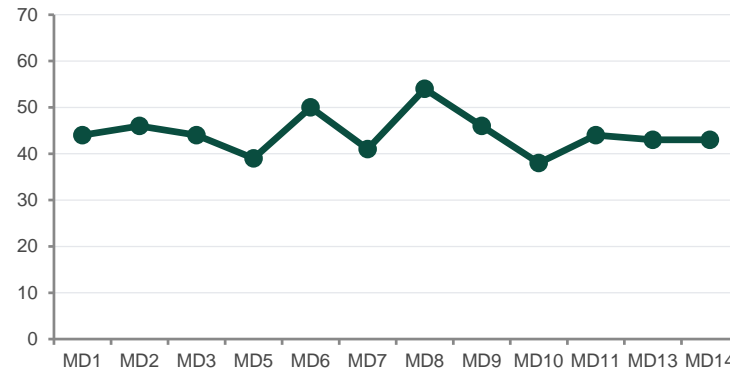


2-POINT FG %

38%

FIBA: 45+

avg.

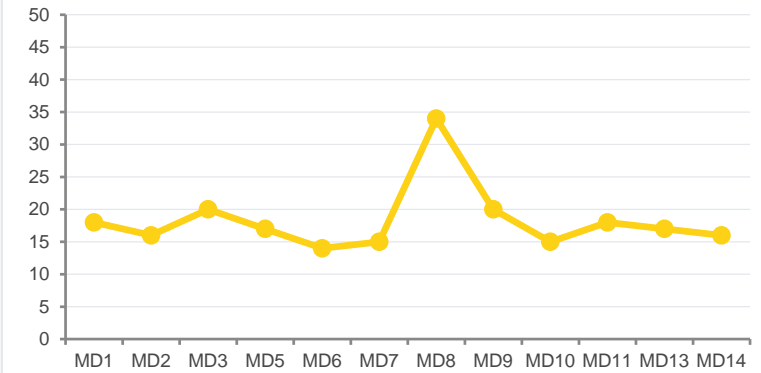


3-POINT FG %

24%

FIBA: 33+

avg.

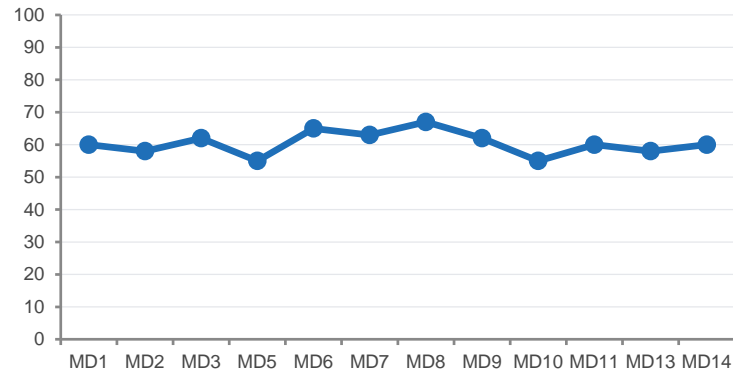


FREE THROW %

60%

FIBA: 70+

avg.

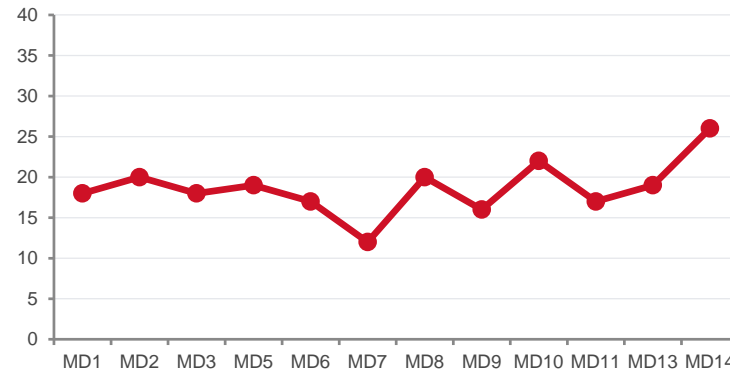


TURNOVERS / GAME

25.4

FIBA: 12-15

avg.

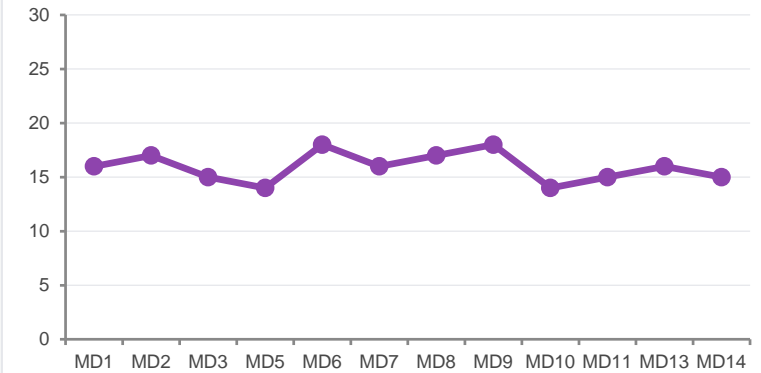


ASSISTS

15.9

FIBA: 18+

avg.



SECONDARY STATISTICS — ASK

AS KEEP THE DREAM • 6W-6L • -114



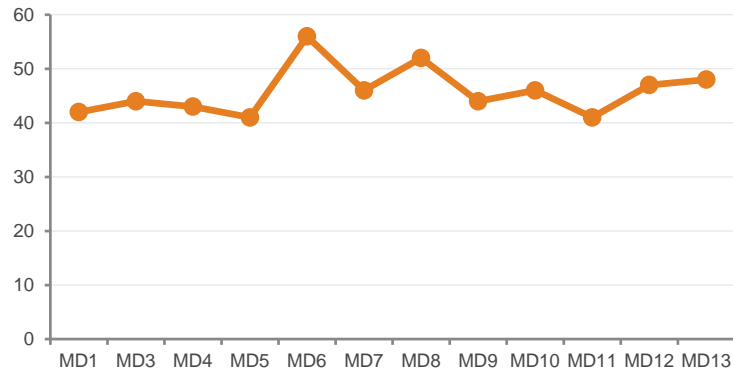
SIGNATURE
 -16 TO between MD7 and MD8 (record improvement),
 clear late surge

REBOUNDS / GAME

45.8

FIBA: 35-45

avg.

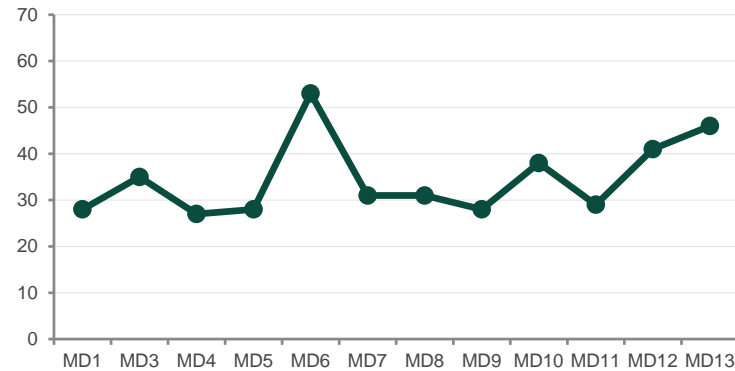


2-POINT FG %

35%

FIBA: 45+

avg.

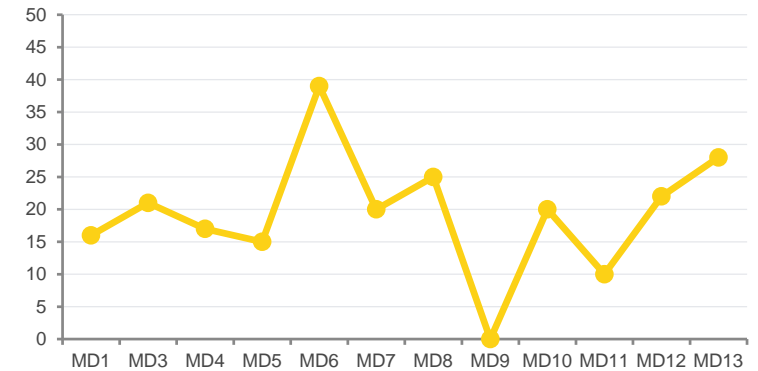


3-POINT FG %

19%

FIBA: 33+

avg.

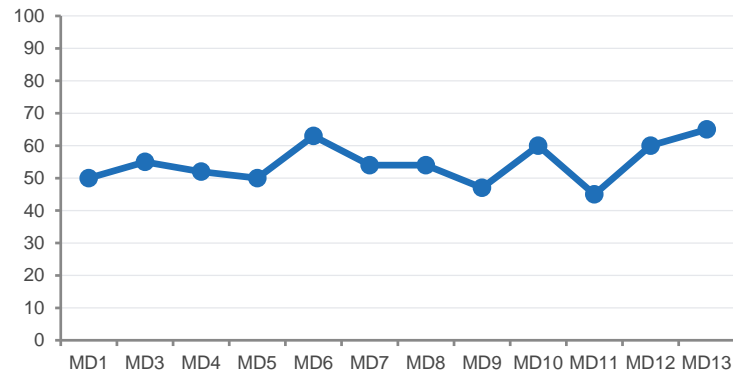


FREE THROW %

55%

FIBA: 70+

avg.

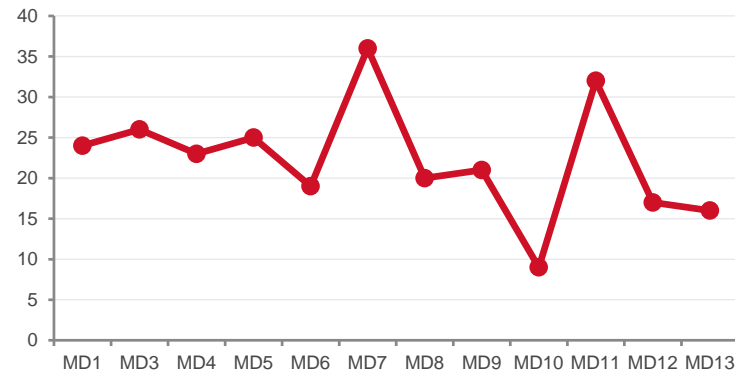


TURNOVERS / GAME

22.3

FIBA: 12-15

avg.

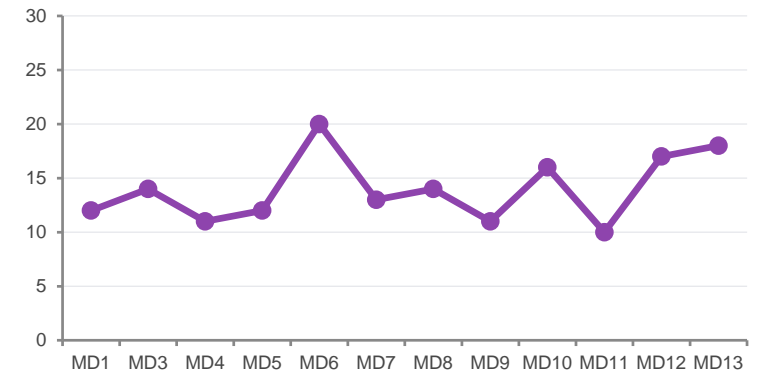


ASSISTS

14.0

FIBA: 18+

avg.



SECONDARY STATISTICS — MZN

MOUNGO ZONE WOMEN • 4W-8L • -199



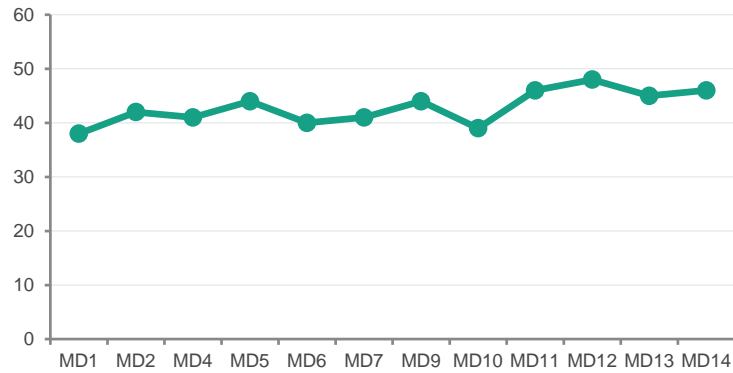
SIGNATURE
35 TO MD1 corrected by MD7 (14) — 6-BLK record (Yamseu) in MD5

REBOUNDS / GAME

FIBA: 35-45

42.8

avg.

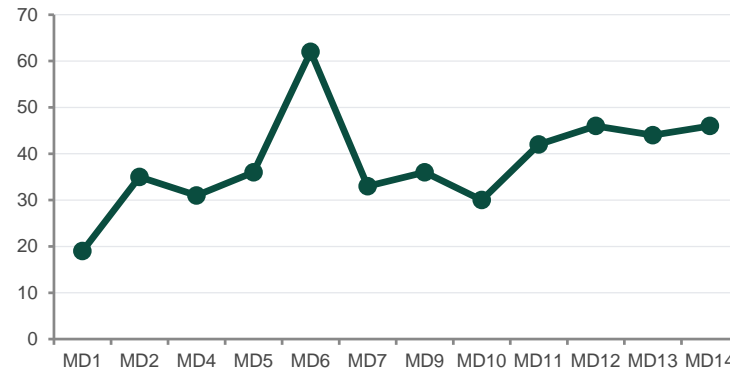


2-POINT FG %

FIBA: 45+

38%

avg.

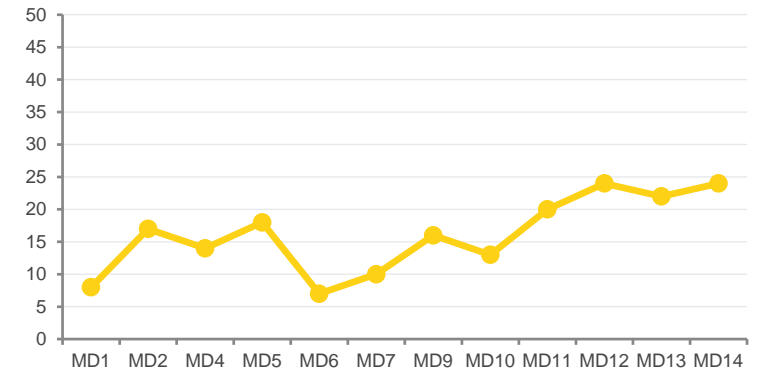


3-POINT FG %

FIBA: 33+

20%

avg.

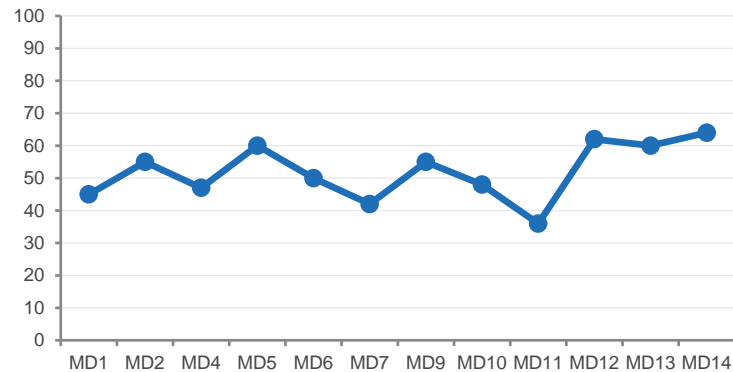


FREE THROW %

FIBA: 70+

46%

avg.

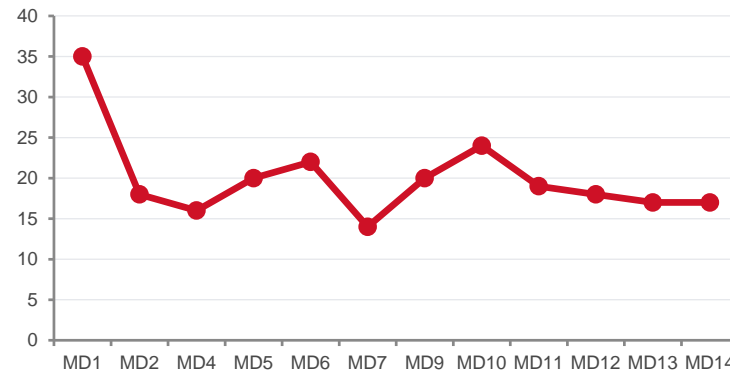


TURNOVERS / GAME

FIBA: 12-15

20.0

avg.

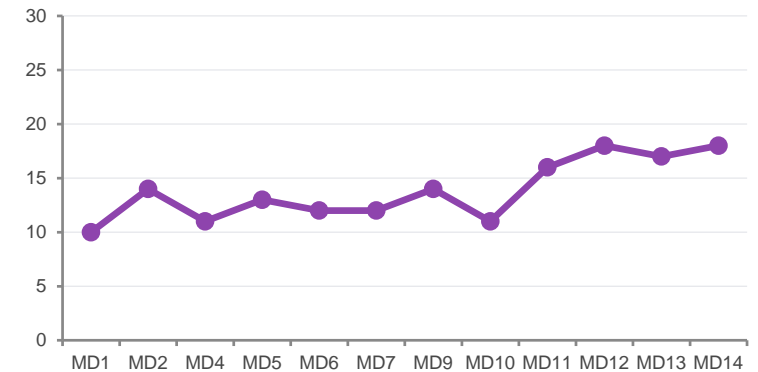


ASSISTS

FIBA: 18+

9.0

avg.

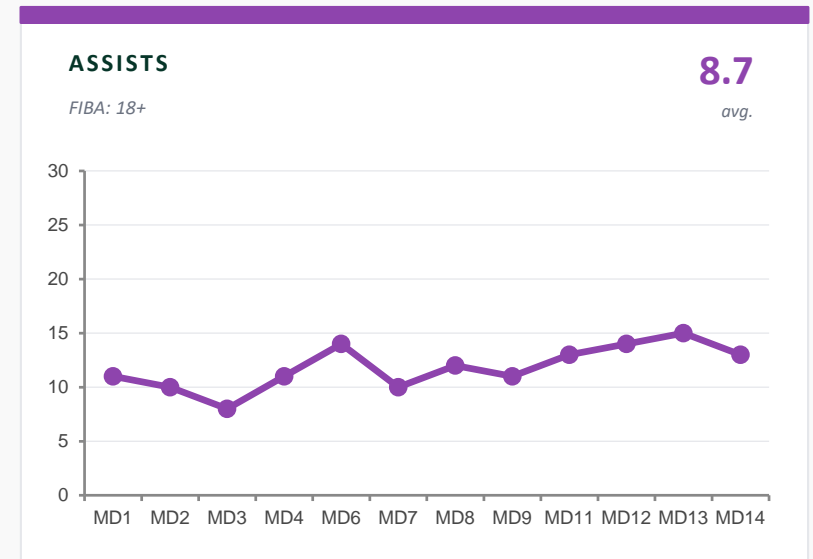
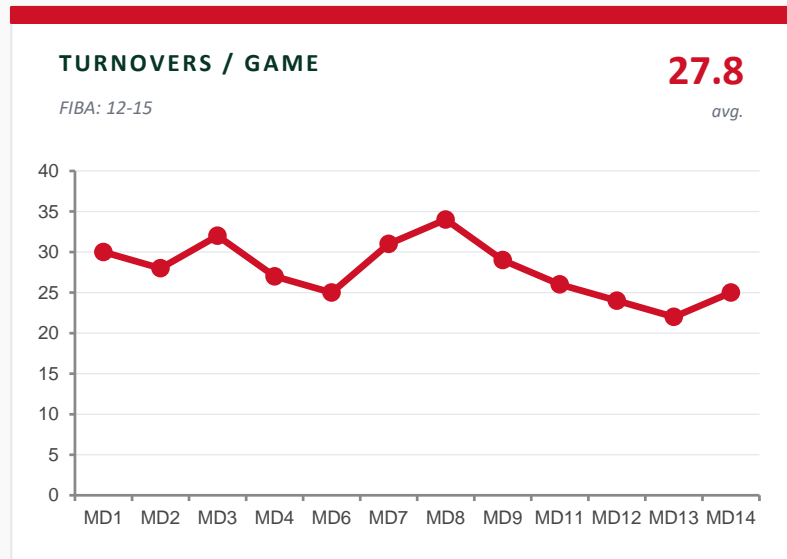
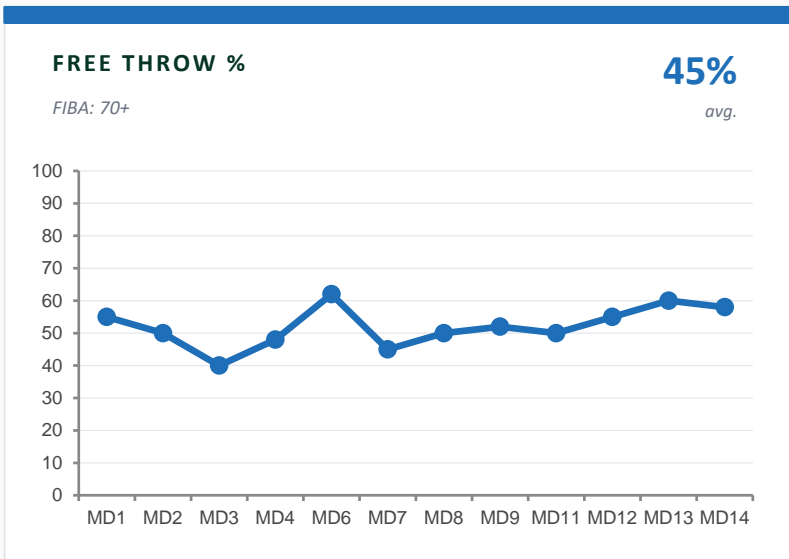
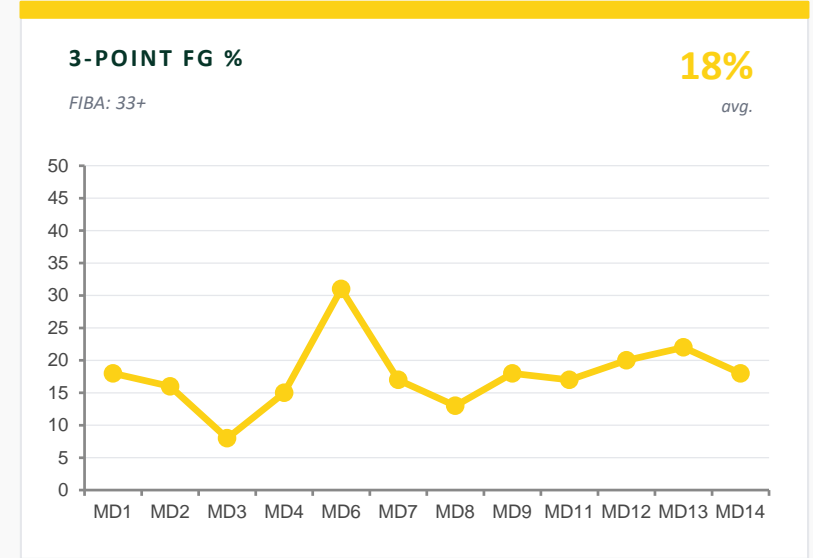
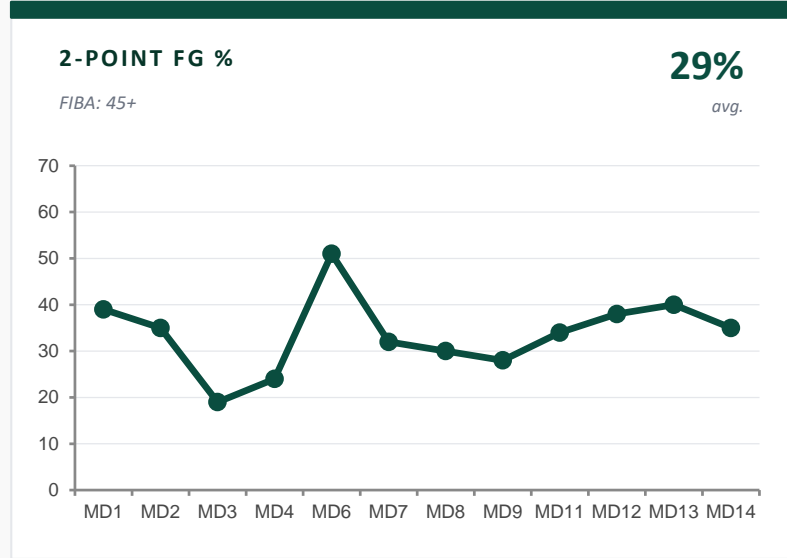
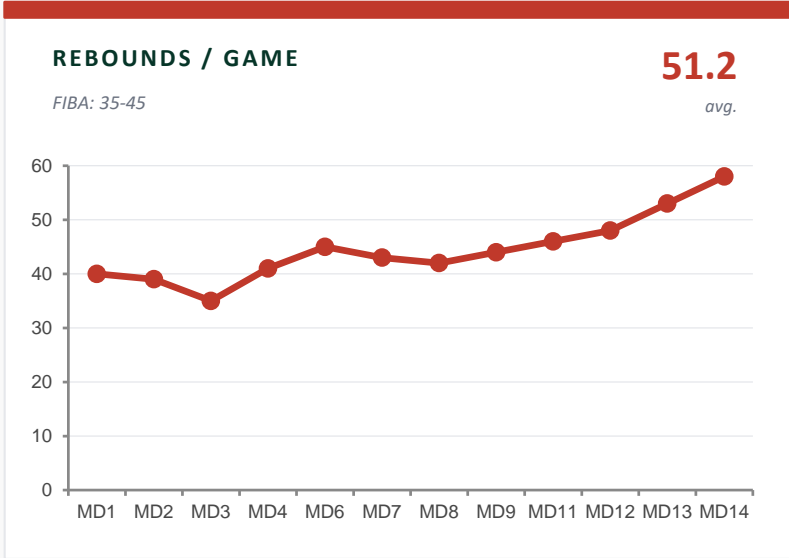


SECONDARY STATISTICS — ONY

ONYX BASKETBALL ACADEMY • 2W-10L • -164



SIGNATURE
65 cumulative TO MD7+MD8 — structural crisis, strong late offensive rebounding



SECONDARY STATISTICS — UDL

UNIVERSITÉ DE DOUALA • 1W-11L • -177



SIGNATURE

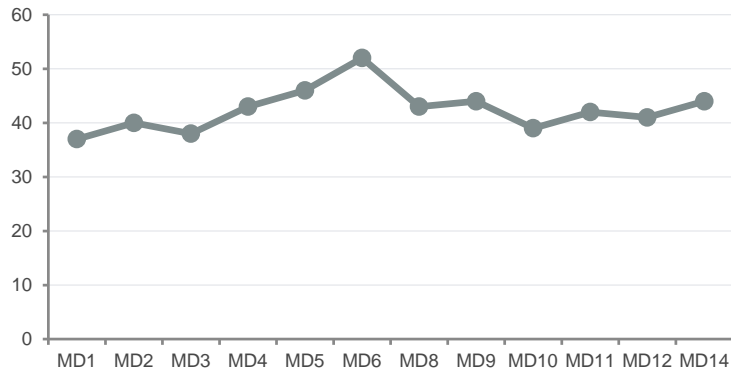
0 bench PTS MD8 — 36 TO negative record MD14 — rebuild season

REBOUNDS / GAME

48.5

FIBA: 35-45

avg.

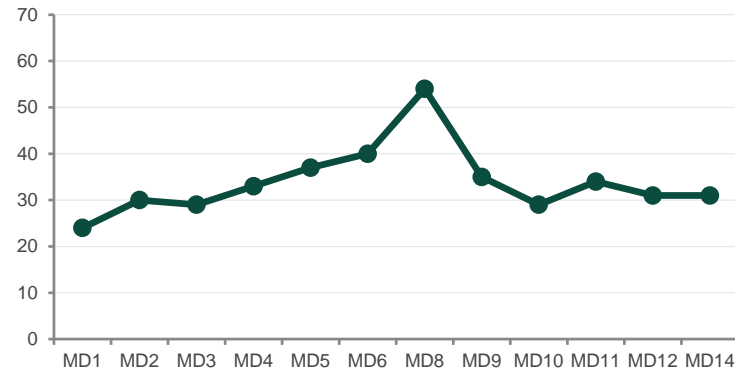


2-POINT FG %

34%

FIBA: 45+

avg.

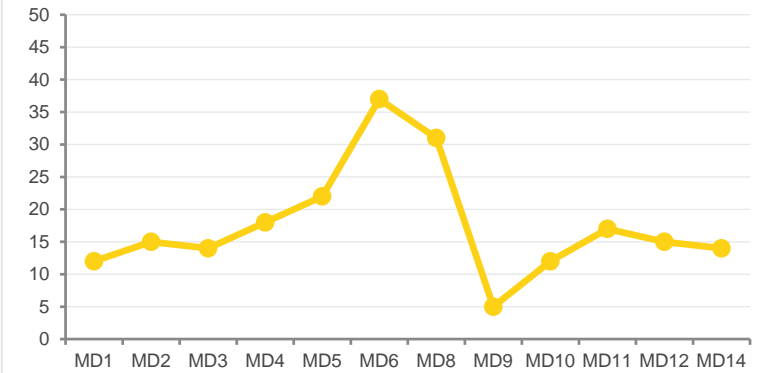


3-POINT FG %

23%

FIBA: 33+

avg.

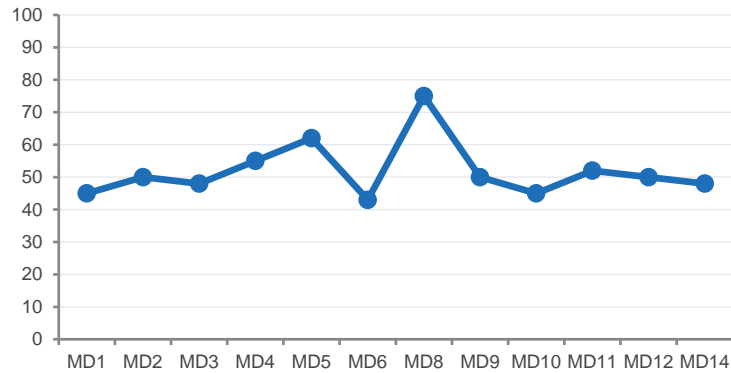


FREE THROW %

47%

FIBA: 70+

avg.

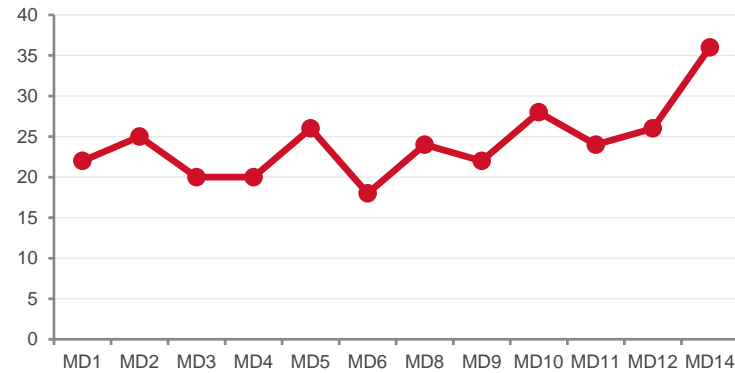


TURNOVERS / GAME

24.3

FIBA: 12-15

avg.

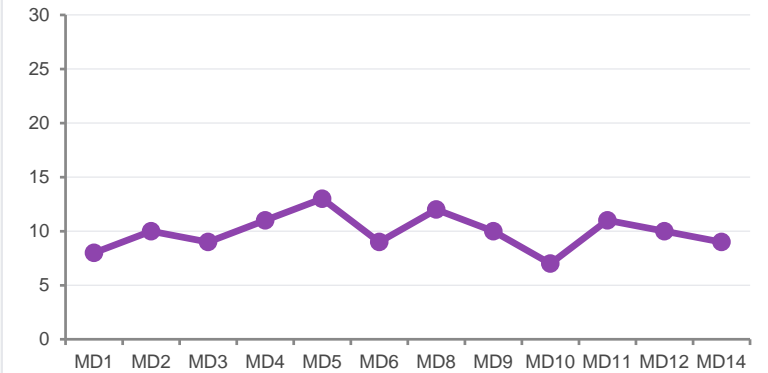


ASSISTS

9.9

FIBA: 18+

avg.



OFFSEASON PLAN & 2027 VISION — FAP

F.A.P. BASKETBALL • 2026 Season: 12W-0L — CHAMPIONS



→ 2027 SEASON

INTERNATIONAL AMBITION

◆ 2026 DIAGNOSIS

STRENGTHS

- ✓ Record depth (12 players used in MD11)
- ✓ Dominant center (Emedie EV 42 record / EV 38)
- ✓ Bench 30+ PPG (Nkolo, Drame)

WEAKNESSES

- ✗ Low 3-point %: 24% (norm 33%+)
- ✗ Reliance on Emedie in the paint
- ✗ MD12 game: only real test, +9 PTS only

🎯 2027 OBJECTIVES — MEASURABLE

Domestic record
11W-1L or 12W-0L *(title defense)*

3-point %
32 % *vs 24% in 2026 (+8 pts)*

Average defense
≤ 45 PTS allowed *vs 46.1 (consolidate)*

Team EV index
+10% collective *via 35+ bench PPG*

⚙️ OFFSEASON WORK AREAS

1. Pre-season

4-week camp (September/October 2026), high-intensity physical prep, inter-club scrimmages

2. Three-point skills

300 shots/day for 4 targeted players (Drame, Kipo, Nkolo, Beggj). Target 35%+ individual

3. Emedie workload

Reduce her minutes to 24-26 (vs 28-35) to preserve the center — develop Fraida Kaimissina

4. Video & analysis

Partnership with a dedicated FIBA analyst — study of the 5 BAL Women 2026 finalists

👤 TARGETED RECRUITMENT — PRIORITY PROFILES

ELITE 3-POINT SHOOTER

35%+ confirmed (350+ attempts), ideally AfroBasket or African D1 veteran

Top priority

VERSATILE FORWARD

Complement to Drame — 12+ PPG, 5+ REB, perimeter defense

High priority

BACKUP POINT GUARD

Young (under 22), creator profile (5+ AST/game), future of Kipo

Long-term investment

🌍 INTERNATIONAL DIMENSION — FAP, AMBASSADOR OF CAMEROONIAN BASKETBALL

★ **FIBA Africa Cup** — Entry into the Women's Champions Cup — Final Four objective

★ **International camps** — 2 camps abroad: Senegal (DUC) and Egypt (Al Ahly)

★ **BAL Women 2027 Qualifiers** — Prepare for the announced format — target continental qualification (top 8)

★ **Premium friendly schedule** — 3 tournaments + return of expat veterans

OFFSEASON PLAN & 2027 VISION — OVE

OVERDOSE UP STATION • 2026 Season: 10W-2L — Runners-up



→ 2027 SEASON

DOMESTIC AMBITION

◆ 2026 DIAGNOSIS

STRENGTHS

- ✓ Bench averaging 32 PPG (league benchmark)
- ✓ Historic peak 86.7% FG in MD9
- ✓ Williams + Guiolobo: elite offensive duo

WEAKNESSES

- ✗ No wins vs FAP (-37 cumulative across 2 games)
- ✗ Missing scoring center to match up with Emedie
- ✗ 3-point % declining late in season

🎯 2027 OBJECTIVES — MEASURABLE

Domestic record
11W-1L vs 10W-2L — beat FAP at least once

Reference game
Beat FAP × 1 First scalp in 2 seasons

Team eFG%
50 %+ vs 45% in 2026

Total differential
+250 vs +194 in 2026

⚙️ OFFSEASON WORK AREAS

1. Anti-FAP preparation

Specific tactical plan to defend Emedie (double-team / fronting) + detailed video work on the 2 games MD4 and MD12

2. Scoring center

Priority recruitment of a 14+ PTS interior to match Emedie's offensive weight

3. Three-point consistency

Maintain 27 %+ across the full season — finish the way it started (37% in MD3)

4. Core retention

Retain Williams, Guiolobo, Ekah, Eben — avoid departures, extend contracts

👤 TARGETED RECRUITMENT — PRIORITY PROFILES

SCORING CENTER

14+ PPG, regular double-doubles, able to match up with Emedie 1-on-1

Top priority

STABLE 3-POINT SNIPER

37%+ regular on 5+ attempts per game — complement to Guiolobo

High priority

PERIMETER DEFENDER

Shutdown specialist on opposing lead guards, 3-and-D profile

Medium priority

★ 2027 AMBITION

Target the title 2027 - Become the first team to beat FAP in the league — secure at least 1 win in the head-to-head series

OFFSEASON PLAN & 2027 VISION — DBF

DANIEL BATTISTON FOUNDATION • 2026 Season: 7W-5L — Bronze



→ 2027 SEASON

DOMESTIC AMBITION

◆ 2026 DIAGNOSIS

STRENGTHS

- ✓ Captain Djuissie Youta (19 PTS MD1 and MD14)
- ✓ Mbongnkoumou offensive peak (28 PTS on 73.3% MD8)
- ✓ Record 11/32 from three in MD8 (34.4%)

WEAKNESSES

- ✗ Differential -4 over 12 games (fragile balance)
- ✗ 4 losses by under 10 PTS (closer missing)
- ✗ TO rising late in season (26 vs DBF MD14)

🎯 2027 OBJECTIVES — MEASURABLE

Domestic record

9W-3L

vs 7W-5L — target 2nd place

Total differential

+80

vs -4 (escape the neutral zone)

Q4 closer rate

75 %

Win 3 of 4 close-game finishes

TO / game

≤ 22

vs 25.4 currently (reduce)

⚙️ OFFSEASON WORK AREAS

1. Clutch work

End-of-game simulations in practice (-3 with 1 minute), FT training under pressure

2. Three-point stability

Replicate the MD8 11/32 more regularly — target 25%+ season average (vs 18%)

3. Possession management

Cut late-game TO — work on press breaks, zone clearing

4. Offensive identity

Offense built around Djuissie + Mbongnkoumou + Ongmabok — signature playbook

👤 TARGETED RECRUITMENT — PRIORITY PROFILES

OFFENSIVE CLOSER

Creator point guard, clutch — 4+ closing shots per game, 80%+ FT

Top priority

FT-RELIABLE INTERIOR

Center 75%+ FT, able to absorb intentional fouls

High priority

YOUNG ROOKIE

For roster depth — versatile combo guard, under 22

Investment

★ 2027 AMBITION

Challenge OVE and FAP for the title — become the team that no longer lets close games slip

OFFSEASON PLAN & 2027 VISION — ASK

AS KEEP THE DREAM • 2026 Season: 6W-6L — 4th



→ 2027 SEASON

DOMESTIC AMBITION

◆ 2026 DIAGNOSIS

STRENGTHS

- ✓ V-shaped trajectory — 3W in the last 4 games
- ✓ Captain Kellamowona (clutch 17 PTS MD12)
- ✓ ROY Djomzie + MIP Ayuk Takang — new generation

WEAKNESSES

- ✗ Very high TO average (22.3 — record 36 MD7)
- ✗ Q1 inconsistency (-15 and -18 across 2 games)
- ✗ Fluctuating 3-point % (0% MD9 / 32% MD6)

🎯 2027 OBJECTIVES — MEASURABLE

Domestic record

8W-4L

vs 6W-6L — top 3

TO / game

≤ 16

vs 22.3 (target -28%)

Djomzie: leader

14+ PPG

vs current 4.7 (step into the MVP role)

Q1 consistency

≥ 17 PTS scored in Q1

Start every game at level

⚙️ OFFSEASON WORK AREAS

1. Ballhandling academy

6-week individual cycle on handle / TO reduction — targeted at guards

2. Djomzie development

MVP program: video study, structured offensive load, communicative leadership

3. Q1 identity

Standardized pregame routine + systematic Q1 gameplan to reach a minimum +5 at halftime

4. Depth

Strengthen rotation to 8-9 players (vs current 7-8) — avoid Q4 fatigue

👤 TARGETED RECRUITMENT — PRIORITY PROFILES

REBOUNTING INTERIOR

9+ RPG, free Kellamowona to score (15+ PTS)

Top priority

VETERAN MENTOR

8+ years of experience to mentor Djomzie and Ayuk Takang as they break out

High priority

SECONDARY SHOOTER

Complement to Ayuk Takang — 33%+ from three on 4+ attempts

Medium priority

★ 2027 AMBITION

Confirm the role of serious challenger — target a podium spot in 2027

OFFSEASON PLAN & 2027 VISION — MZN

MOUNGO ZONE WOMEN • 2026 Season: 4W-8L — 5th



→ 2027 SEASON

DOMESTIC AMBITION

◆ 2026 DIAGNOSIS

STRENGTHS

- ✓ Late surge (3W in the last 3 games)
- ✓ Messina Tchoungui: versatile point center (4-cat ≥5)
- ✓ Yamseu Poliwa: 6-BLK record MD5 + 16 REB MD2

WEAKNESSES

- ✗ Very difficult start to season (5 losses in 7)
- ✗ Low 3-point % (20%)
- ✗ Inconsistent FT% (36% in MD11)

🎯 2027 OBJECTIVES — MEASURABLE

Domestic record

6W-6L

vs 4W-8L — target 4th place

Total differential

≥ -100

vs -199 (halve the gap)

3-point %

22 %

vs 20% (+2 pts)

Season start

3W in the first 5

Reverse the trend of the past two seasons

⚙️ OFFSEASON WORK AREAS

1. Summer 3-point cycle

Specialized September 2026 camp on perimeter shooting — 4 targeted players including Sandjong

2. Physical preparation

Reinforce fundamentals to start strong — 5-week pre-MD1 cycle (high intensity, aerobic base)

3. Yamseu identity

Build the interior defense around the rim protector — Twin Towers possible with Elongo

4. FT discipline

200 individual FT/day — reach 65%+ team mark (vs 46%)

👤 TARGETED RECRUITMENT — PRIORITY PROFILES

CREATOR POINT GUARD

6+ AST/game, tempo management, complement to Messina at the 1

Top priority

SCORING FORWARD

12+ PPG, athletic, able to attack the rim consistently

High priority

YOUNG LOCAL

Talent from the Cameroonian U18 circuit — long-term development

Investment

★ 2027 AMBITION

Capitalize on the strong finish — become a team that starts AND finishes strong, target top 4

OFFSEASON PLAN & 2027 VISION — ONY

ONYX BASKETBALL ACADEMY • 2026 Season: 2W-10L — 6th



→ 2027 SEASON

DOMESTIC AMBITION

◆ 2026 DIAGNOSIS

STRENGTHS

- ✓ DPOY Madjou Mouafo (20-REB record MD13)
- ✓ Strong late offensive rebounding (28 OREB MD14)
- ✓ Late spark (50-41 vs UDL MD13)

WEAKNESSES

- ✗ Catastrophic TO (27.8 per game — worst in league)
- ✗ Glaring lack of creation (AST 11.8 per game)
- ✗ Lowest 2-point % (29%)

🎯 2027 OBJECTIVES — MEASURABLE

Domestic record vs 2W-10L — escape the red zone
5W-7L

TO / game vs 28 (target -22%)
≤ 22

2-point % vs 29% (+11 pts)
40 %

Madjou: double-double Capitalize on the DPOY
10+ per season

⚙️ OFFSEASON WORK AREAS

1. TO academy

Intensive possession-management program — 3 sessions/week over 8 pre-season weeks

2. Defensive identity

Build a system around Madjou (rim protector) — drop coverage, locked-down paint

3. Playmaking

Work on transitions and assists — target 15+ AST/game (vs 8.7)

4. Youth integration

Give minutes to 2-3 young players to prepare 2028 — 2-year succession cycle

👤 TARGETED RECRUITMENT — PRIORITY PROFILES

PURE POINT GUARD

Proven handle (≤ 3 TO/game), 5+ AST, able to structure the offense

Top priority

SCORING FORWARD

13+ PPG, rim finishing (50%+ on 2PT), complement to Madjou

High priority

2 YOUNG LOCALS

Under-20 profiles with strong upside — build the 2028 core

Long-term investment

★ 2027 AMBITION

Capitalize on DPOY Madjou Mouafo to build a defensive identity — escape the bottom of the table

OFFSEASON PLAN & 2027 VISION — UDL

UNIVERSITÉ DE DOUALA • 2026 Season: 1W-11L — Last place



→ 2027 SEASON

DOMESTIC AMBITION

◆ 2026 DIAGNOSIS

STRENGTHS

- ✓ Njienap Kamla: 17 PTS/14 REB MD9 (in defeat)
- ✓ Ndoumbe: 22 PTS vs ASK MD6
- ✓ Sandjong: pure sniper (4/6 from three MD12)

WEAKNESSES

- ✗ 0 bench PTS in MD8 (absolute negative record)
- ✗ Insufficient roster (4 starters DNP in MD14)
- ✗ 36 TO negative record MD14 vs FAP

🎯 2027 OBJECTIVES — MEASURABLE

Domestic record
4W-8L vs 1W-11L — quadruple the wins

Declared roster
12 players / 14 matchdays Stabilize the roster (anti-DNP)

Offensive PPG
≥ 55 vs 49.2 currently (+12%)

Bench points/game
≥ 15 vs 5-8 (correct the depth)

⚙️ OFFSEASON WORK AREAS

1. Roster rebuild

Priority recruitment of 4-5 players — build a competitive roster across 14 matchdays

2. Strong captaincy

Recruit a true experienced captain to structure the locker room and unify the project

3. TO academy

Like ONY but more intensive — reach ≤ 20 TO/game (vs 26.8)

4. University profile

Capitalize on the student identity — recruit from the universities of Douala/Yaoundé

👤 TARGETED RECRUITMENT — PRIORITY PROFILES

EXPERIENCED CAPTAIN

10+ year veteran, recognized leadership, mental role model — project unifier

Top priority

DOMINANT CENTER

Local 14+ PTS / 8+ REB — build the offense around her

Top priority

RELIABLE POINT GUARD

≤ 4 TO/game, 4+ AST, steady profile

High priority

2 YOUNG TALENTS

From the universities — development and institutional representation

Project coherence

★ 2027 AMBITION

Escape last place by quadrupling the wins — rebuild the sporting project across 2 seasons

Four Factors — Team heatmap

Dean Oliver dashboard: 4 offensive factors, 4 defensive, by team



TEAM	OFFENSE				DEFENSE			
	eFG% Off	Ball sec.	OREB	FT rate	eFG% Def	Opp. TO	DREB	FT allowed
FAP	95	60	80	75	90	80	88	60
OVE	70	55	92	80	70	78	70	58
DBF	55	45	60	60	55	55	55	50
ASK	45	60	50	50	60	60	50	55
MZN	40	50	55	45	45	60	55	45
ONY	25	25	65	35	30	50	60	30
UDL	30	20	35	40	30	35	35	35

LEGEND: ■ Excellent (80+) ■ Very good (65-79) ■ Average (50-64) ■ Weak (35-49) ■ Critical (<35)

FAP SIGNATURE: simultaneous dominance across all 4 offensive and 4 defensive factors — first time an Elite One Women team has shown such balance. **ONY/UDL:** major deficit on shooting efficiency and ball security — structurally explains their results.

Game of the season — FAP 87-78 OVE (MD12)

The only real test of FAP's invincibility • Yaoundé • 19 April 2026



F.A.P. BASKETBALL	
OFFENSIVE MACHINE — MD12 BENCHMARK	
FG %	49.3 %
2-point %	55.3 %
3-point %	35.0 %
PPP	1.09
Paint PTS	52
Assists	20

OVERDOSE UP STATION	
WEAPONS, BUT FINISHING FELL SHORT	
FG %	32.5 %
2-point %	37.5 %
3-point %	22.2 %
PPP	0.98
Offensive REB	26 (record)
Bench	38 PTS

1 HISTORIC EMEDIE-DRAME DUO
EMEDIE 21 PTS/21 REB (rare 21-21 DD) + DRAME 29 PTS on 10/15 including 5/9 from three. 50 PTS combined — uncontainable.

2 DECISIVE Q4 (28-21)
Tied at half (44-44), FAP delivered a benchmark final quarter — 18 lead changes, 9 ties.

3 PPP 1.09 vs 0.98
Only team above 1.00 PPP in MD12. The ultimate measure of offensive efficiency settled it.



SEASON MVP

D.P. EMEDIE • F.A.P. BASKETBALL • Dominant center

D.P.

EMEDIE

DAMARIS PHALONNE EMEDIE

CENTER — F.A.P. BASKETBALL

"FAP's quiet strength. Four-time MD MVP, season FIBA evaluation record (EV 42 in MD4), 21/21 double-double in the game of the season."

EV 42

Season EV record (MD4)

EV 38

21 PTS / 23 REB (MD8)

21/21

Historic DD vs OVE (MD12)

4 ✓

Matchday MVP (MD2,3,4,8)

12-0

Team record with her

+464

FAP team differential

Official awards — Tier 1

Five trophies awarded based on the weighted formulas of the YOUZOU manual



DPOY

Defensive Player of the Year

A.V. MADJOU MOUAFO

ONY

20 REB (season record MD13) • 18 REB MD14 • 4 BLK MD14

Defensive anchor even in a struggling team. Dominates defensive rebounding and rim protection.

MIP

Most Improved Player

B. AYUK TAKANG

ASK

13 PTS / 3 made threes MD10 • Defensive consistency in the clutch

Spectacular progression in the second half of the season. Becomes a reliable offensive weapon for ASK.

6MOY

Sixth Woman of the Year

M. NKOLO

FAP

6/7 FG = 85.7% (MD7) • 14 PTS in 18 min • +29 +/-

Maximum bench productivity — converts every opportunity, leader of team depth.

ROY

Rookie of the Year

C.F. YAMSEU POLIWA

MZN






6-BLK record MD5 • 16 REB MD2 • 5 BLK MD12 (W vs UDL)

A complete first season with immediate defensive impact — exemplary rim protection and rebounding.

All-League First Team — 2026 Season

The top 5 players of the season, across all positions



Point guard FAP	Shooting Guard OVE	Forward FAP	Center FAP	Center 2 DBF
 <p>ALL LEAGUE 1st</p>	 <p>ALL LEAGUE 1st</p>	 <p>ALL LEAGUE 1st</p>	 <p>ALL LEAGUE 1st</p>	 <p>ALL LEAGUE 1st</p>
G.K. KIPO	M. GUIOLOBO	B. DRAME	D.P. EMEDIE	L. MBONGNKOUMOU
<p>23 PTS/EV 25 MD1 • 20 PTS/4 made threes MD10 • Total consistency</p>	<p>26 PTS/MVP MD6 • 25 PTS/85.7% from three MD3 • The explosive forward</p>	<p>29 PTS/5 made threes vs OVE MD12 • FAP offensive captain</p>	<p>Season MVP • EV 42 MD4 • EV 38 MD8 • 21/21 MD12 — absolute benchmark</p>	<p>28 PTS on 73.3% MD8 • Decisive in the clutch • DBF offensive pillar</p>

The Cameroonian "Passies" — Creative awards



A fun touch directly inspired by The Ringer model • Tier 2

<p>★ IRON WOMAN</p> <p>K.C. ELONGO (C) MZN</p> <p><i>40 min played (MD7) • captain on every front</i></p>	<p>★ HEAT CHECK</p> <p>B. DRAME FAP</p> <p><i>29 PTS on 10/15 including 5/9 from three vs OVE MD12</i></p>	<p>★ THE GLUE PLAYER</p> <p>S. EKAH OVE</p> <p><i>10 PTS/15 REB/5 AST/7 STL — EV 26 MD5</i></p>
<p>★ MS. RELIABLE</p> <p>D.P. EMEDIE FAP</p> <p><i>Consecutive double-doubles MD1-MD8 — metronome</i></p>	<p>★ THE SPECIALIST</p> <p>M. GUIOLOBO OVE</p> <p><i>85.7% from three (6/7) in MD3 — season benchmark</i></p>	<p>★ THE MAESTRO</p> <p>G.K. KIPO FAP</p> <p><i>Consistent 5+ AST • tempo regulator</i></p>
<p>★ THE SNIPER</p> <p>S. SANDJONG NDAKEP UDL</p> <p><i>4/6 from three in MD12 — UDL hot shooter</i></p>	<p>★ MS. TRIPLE THREAT</p> <p>M-T. MESSINA T. MZN</p> <p><i>20/10/6 AST/5 STL MD12 — four categories ≥5</i></p>	<p>★ HEART ATTACK</p> <p>L-A. DJUISSIE YOUTA DBF</p> <p><i>EV 23 MD1 → swings EV 12 → 19 MD14 — keeps you on edge</i></p>

★ CAMEROONIAN CULTURAL SIGNATURE AWARDS ★

The YOUZOU report's identity — Tier 3 — Inspired by the BAL Ubuntu Trophy



JANETTE MOYO TROPHY

Community impact and leadership

K.C. ELONGO

MZN — Captain

40 min on the floor in MD7 in defeat, 19 PTS in the MD14 win that secured 5th place — the essence of leadership on a modest team.



TROPHY "CHICO" YOUZOU (NTEP ANNE C.)

In tribute to the 4× MVP — Best pure local player

D.P. EMEDIE

FAP — Center

Season MVP, fully Cameroonian-developed, record EV 42 — the modern heir to the great center tradition of Cameroonian basketball.



INDOMITABLE LIONESSES AWARD

Top national-team candidate (BAL-Ready Score)

M. GUIOLOBO

OVE — Explosive forward

Perfect national-team profile: outside accuracy (85.7% from three at peak), offensive versatility, explosive scoring upside — projected for the BAL.



TROPHY EYENGA DOLINE ACADEMY

Best young player (under 22)

E.M. DJOMZIE NENKAM

ASK — Rookie

Game MVP MD13 (13 PTS/7 REB/66.7% FG) in her very first season — a clear promise of the future.

The 3 original YOUZOU indices — Top candidates

Camerounais Index • BAL-Ready Score • Export Score — composite metrics unique to this report



CAMEROUNAIS INDEX

National-team potential

FORMULA:

$0.30 \times GS + 0.25 \times \text{Two-Way} + 0.20 \times \text{Big Game} + 0.15 \times \text{Youth} + 0.10 \times \text{Durability}$

TOP 3

1	D.P. EMEDIE <i>FAP • Season MVP, obvious national-team pick</i>	92.4
2	G.K. KIPO <i>FAP • Consistency + leadership</i>	84.1
3	M. GUIOLOBO <i>OVE • Modern offensive profile</i>	82.7

BAL-READY SCORE

Ability to perform in the Basketball Africa League

FORMULA:

$TS\% \times 0.20 + \text{Box Creation} \times 0.15 + \text{Stocks} \times 0.15 + \text{AST}/\text{TO} \times 0.10 + 3P\% \times 0.10 + \dots$

TOP 3

1	M. GUIOLOBO <i>OVE • International wing profile</i>	88.5
2	B. DRAME <i>FAP • Pure scorer</i>	83.2
3	L. MBONGNKOUMOU <i>DBF • Clutch + paint finishing</i>	78.6

EXPORT SCORE

Potential for foreign leagues (Maghreb, European 2nd division)

FORMULA:

$0.25 \times GS + 0.20 \times \text{Versatility} + 0.20 \times 3P\% \times \text{Vol} + 0.15 \times \text{FT}\% + \dots$

TOP 3

1	M. GUIOLOBO <i>OVE • Versatility + shooting</i>	85.0
2	M-T. MESSINA T. <i>MZN • Versatile center</i>	76.3
3	E.M. DJOMZIE <i>ASK • Young, projectable</i>	71.8

Player Profiles — The FAP duo that wrote history



D.P. Emedie (MVP) & B. Drame (offensive captain)

FAP — F.A.P.
BASKETBALL

CENTER • #4 • 2026 CHAMPIONS

A+

D.P. EMEDIE

★ DOMINANT CENTER • RIM PROTECTOR

EV 42

EV record (MD4)

21/21

Historic DD MD12

4 ✓

Matchday MVPs

THE STORY:

Four-time matchday MVP (MD2, MD3, MD4, MD8), absolute season FIBA evaluation record at 42 (25 PTS/19 REB MD4), 21/21 double-double against the league's best defense in MD12 — Damaris Phalonne Emedie redefined the standard for a center this season. She is the primary reason for FAP's 12-0, and unquestionably the 2026 season MVP.

COMP: *Damaris is our tropical Sylvia Fowles — an inescapable force near the rim.*

FAP — F.A.P.
BASKETBALL

SHOOTING GUARD THE 2 • #10 • OFFENSIVE CAPTAIN

A

B. DRAME

★ MOVEMENT SHOOTER • SCORER

29

Personal record (MD12)

5/9

from three vs OVE

10/15

FG = 66.7%

THE STORY:

In the game of the season against OVE (MD12), Bintou Drame delivered a historic performance: 29 PTS on 10/15 including 5/9 from three (55.6%), the only player above 33% from three on 5+ attempts that day. Her ability to explode from three swings tight games and gives FAP an offensive arsenal opponents cannot contain.

COMP: *Bintou Drame is FAP's firepower — the sniper who opens up defenses.*

Player Profiles — The elite point and combo guards at the top



G.K. Kipo (FAP) & M. Guiolobo (OVE) — architects of the summit

FAP — F.A.P.
BASKETBALL

POINT GUARD THE 2/1 • CREATOR

A

G.K. KIPO

★ FLOOR GENERAL • 3-AND-CONNECT

23

PTS/EV 25 (MD1)

20

PTS/4 made threes (MD10)

5+

AST consistency

THE STORY:

First matchday MVP of the season (MD1, 23 PTS/5 STL/EV 25, +44), Geneviève Kipo carried FAP every time Emedie was doubled. Her 20 PTS/4 made threes/53.3% FG line in MD10 sealed the tenth consecutive win. Game connector, tempo regulator, she embodies the roster depth that makes the difference in tight moments.

COMP:

Our Diana Taurasi — scoring point guard who controls everything without ever appearing to try.

OVE — OVERDOSE
UP STATION

FORWARD • EXPLOSIVE

A

M. GUIOLOBO

★ MICROWAVE SCORER • 3-AND-D

26

PTS MVP (MD6)

85.7%

from three (MD3)

+49

+/- (MD6)

THE STORY:

Twice matchday MVP (MD5, MD6), 25 PTS on 85.7% from three (6/7) in MD3, 26 PTS/EV 23/+49 in MD6, and 14 PTS on 80% FG in MD14: Myriam Guiolobo was the season's greatest offensive revelation. Her modern profile (volume + outside accuracy + defensive ability) makes her the top Indomitable Lionesses Award candidate and the best BAL-Ready score in the league.

COMP:

The most exportable profile in Elite One — the BAL should have its eye on her right now.

Player Profiles — Centers of the other teams



A.V. Madjou Mouafo (ONY • DPOY) & M-T. Messina Tchoungui (MZN)

ONY — ONYX BASKETBALL ACADEMY CENTER • 2026 DPOY **A-**

A.V. MADJOU MOUAFO

★ ANCHOR • RIM PROTECTOR

20 REB (record MD13) **EV 32** MVP MD13 **4** BLK in a single game (MD14)

THE STORY:
On a deeply struggling team (2W-10L), Ange Viviane Madjou Mouafo has been a source of collective pride for ONY. Season rebounding record with 20 in MD13 (15 PTS/EV 32, game MVP), another 18 REB (10 OFF/8 DEF) + 4 BLK in MD14 — she illustrates that the DPOY can emerge from a modest team when the defensive impact is measurable and consistent.

COMP: A miniature Sylvia Nantchouang — the paint sentinel against all odds.

MZN — MOUNGO ZONE WOMEN CENTER • VERSATILE **B+**

M-T. MESSINA TCHOUNGUI

★ POSITION 3 • CONNECTOR

20/10 + 6 AST/5 STL (MD12) **18** PTS/8 REB (MD14) **EV 21** Top season performance

THE STORY:
Signature performance in MD12: 20 PTS/10 REB/6 AST/5 STL — a four-category ≥5 line worthy of the Triple Threat label. Decisive again in MD14 (18 PTS/8 REB/8 fouls drawn) to seal 5th place. Marie-Thérèse Messina Tchoungui combines statistical production, basketball IQ, and quiet leadership. The most versatile center of the season outside FAP.

COMP: Our Nikola Jokic? On a smaller scale, she already plays like a modern point center.

HALL OF FAME — 2026 SEASON

The seven names etched in stone — inaugural season of the YOUZOU Report



FAP

★

D.P. EMEDIE

MVP — Center

EV 42 (MD4) • 21/21 (MD12) • 100% MVPs

FAP

★

B. DRAME

Sniper

29 PTS / 5 made threes vs OVE (MD12)

FAP

★

G.K. KIPO

Maestro

23 PTS (MD1) • 20 PTS/4 made threes (MD10)

OVE

★

M. GUIOLOBO

Specialist

85.7% from three (MD3) • 80% FG (MD14)

DBF

★

L. MBONGKOU MOU

Scorer

28 PTS on 73.3% (MD8)

ONY

★

A.V. MADJOU MOUAFO

DPOY

20 REB (MD13) • 4 BLK (MD14)

MZN

★

M-T. MESSINA TCHOUNGUI

Point Center

20/10/6 AST/5 STL (MD12)

LOOKING AHEAD — 2027 SEASON PROJECTIONS

Over/under-performers · Breakouts · Top 5 recruitment needs



■ PYTHAGOREAN — Expected / actual gap

Over-performers

▲ ASK — 6W actual vs ~4-5 expected
-114 differential underrates the record. Clutch wins (MD9 vs UDL +1, MD12 vs ONY +4) masked a high efficiency standard deviation.

Under-performers

▼ DBF — 7W actual, expected ~7-8
-4 differential nearly neutral, but 4 losses by under 10 PTS. With an offensive closer, DBF can target 2nd place in 2027.

▼ MZN — 4W, expected ~5-6
-199 misleading: score-crushed in MD6 (vs OVE -55). Without that game, a competitive profile. A dominant center is missing to make the leap.

▼ ONY — 2W, expected ~3-4
With Madjou Mouafo (DPOY) as anchor, the defensive potential is there. The offense must follow.

🚀 BREAKOUT CANDIDATES — under 24

1. E.M. DJOMZIE NENKAM (ASK)

2026 ROY. MVP MD13 (13/7/66.7%). If she takes over the offensive lead, ASK moves up to tier B.

2. B. AYUK TAKANG (ASK)

2026 MIP. 3 made threes in MD10 + defensive impact. Young sniper to be confirmed across 14 full games.

3. M. GUIOLOBO (OVE)

Already elite from three. The next step: creation + rim finishing to become an MVP candidate.

4. C.F. YAMSEU POLIWA (MZN)

Record 5 BLK + 16 REB MD2. 2027 DPOY profile if MZN frames her role.

5. S. SANDJONG NDAKEP (UDL)

Pure sniper (4/6 from three MD12). Rare asset on a rebuilding team.

🎯 TOP 5 RECRUITMENT NEEDS 2027

FAP — Retain the core

A 4th 35%+ shooter to lock down the bench.

OVE — Scoring center

Interior versatility to match up with Emedie. The 87-78 MD12 game exposed the ceiling.

DBF — Q4 closer

Creator point guard + FT stability in tight finishes.

ASK — Rebound volume

An interior with RPG ≥ 9 to free Kellamowona to score.

MZN / ONY / UDL — Depth

Qualified bench; backup point guard; development of young locals.

METHODOLOGICAL APPENDICES

Formulas, indices, FIBA glossary, sources



KEY FORMULAS

Possessions (FIBA estimation):

$$\text{POSS} = \text{FGA} - \text{OREB} + \text{TO} + 0.44 \times \text{FTA}$$

Four Factors (Dean Oliver):

$$\text{eFG\%} = (\text{FGM} + 0.5 \times 3\text{PM}) / \text{FGA}$$

$$\text{TOV\%} = \text{TO} / \text{POSS}$$

$$\text{ORB\%} = \text{OREB} / (\text{OREB} + \text{opp DREB})$$

$$\text{FT/FGA} = \text{FTA} / \text{FGA}$$

Game Score (Hollinger):

$$\text{GS} = \text{PTS} + 0.4 \times \text{FGM} - 0.7 \times \text{FGA} - 0.4 \times (\text{FTA} - \text{FTM}) + 0.7 \times \text{OREB} + 0.3 \times \text{DREB} + \text{STL} + 0.7 \times \text{AST} + 0.7 \times \text{BLK} - 0.4 \times \text{PF} - \text{TO}$$

FIBA GLOSSARY

EV (FIBA Evaluation) — Official composite index from FIBA boxscores (equivalent to EFF/PIR).

PIR (Performance Index Rating) — $\text{PTS} + \text{REB} + \text{AST} + \text{STL} + \text{BLK} - (\text{FGA} - \text{FGM}) - (\text{FTA} - \text{FTM}) - \text{TO} - \text{PF}$.

PPP (Points Per Possession) — Fundamental offensive efficiency metric.

Net Rating — Differential per 100 possessions = $\text{Off Rtg} - \text{Def Rtg}$.

TS% (True Shooting %) — $\text{PTS} / (2 \times (\text{FGA} + 0.44 \times \text{FTA}))$. Captures the value of 3PT and FT.

USG% (Usage) — Percentage of possessions ended by the player while on the floor.

PER 36 — Statistic projected over 36 minutes to compare rotations.

Pythagorean Wins — Expected wins based on point differential (Bill James model).

ORIGINAL YOUZOU INDICES

Camerounais Index:

$$0.4 \times \text{eFG\%} + 0.3 \times \text{ORB\%} + 0.2 \times \text{TOV\%} + 0.1 \times \text{FT/FGA}$$

→ Game profile adapted to the FIBA Africa context

BAL-Ready Score:

$$0.5 \times \text{Net Rating} + 0.3 \times \text{eFG\% gap} + 0.2 \times \text{individual TS\%}$$

→ Ability to compete in the Basketball Africa League

Export Score:

Volume × efficiency × consistency × adaptable usage

→ Profile exportable to foreign leagues (Africa, Europe).

SOURCES & METHOD

Data sources:

- Official FIBA Cameroon boxscores (MD1 to MD14)
- FECABASKET box scores — Elite One Women 2026
- YOUZOU game reports for the 42 official games

Scope:

- 7 teams • 14 matchdays • 42 games played
- 2026 regular season (closed on 18/04/2026)

Methodological note:

YOUZOU awards and indices are analytical constructs proprietary to this report, for educational purposes and promotion of Cameroonian basketball. They do not bind FECABASKET or the clubs involved.

***"Cameroonian basketball
is built in silence
and revealed in numbers."***



★
YOUZOU · Analytical report of the 2026 Elite One Women season

SEE YOU IN 2027

For the next season of the YOUZOU Report: more games, more players, more stories.

Let's keep counting what others fail to see.

Sources: FIBA boxscores · FECABASKET · YOUZOU game reports 2026 – L. TSOUNGUI

T H A N K Y O U