

FECABASKET · ELITE ONE MEN 2026



STATISTICAL REPORT

YOUZOU ELITE ONE

2025-2026 SEASON

CHAMPION · B.E.A.C. BASKETBALL

11W — 3L · Diff. +95 · H2H 2-0 vs ALPH BBK YDÉ



Record report — ELITE ONE MEN 2026 SEASON — FECABASKET DTN — L. TSOUNGUI



The journey in 14 chapters



01	The Title <i>B.E.A.C. champion</i>	08	6MOY <i>MIENNE EYENE</i>
02	5 Numbers <i>that define the season</i>	09	Top PIR <i>League leaders</i>
03	Power Rankings <i>Final standings</i>	10	YOUZOU Indices <i>CI · BAL-Ready · Export</i>
04	Four Factors <i>League diagnostic</i>	11	Hall of Fame <i>Inaugural class</i>
05	Tier List <i>Teams S/A/B/C/D</i>	12	Looking 2027 <i>Pythagorean & Breakouts</i>
06	MVP <i>MELINGUI ESSA</i>	13	Signature insight <i>The absence of the Stretch Big</i>
07	DPOY <i>MPOUDI EYAMBE</i>	14	Appendices <i>Methodology</i>



B.E.A.C. 2026 champion

"Our team wins through defense — collective excellence in service of the result."

— Coach Kevin NGWESE, YOUZOU 2026 Ubuntu Trophy

11

WINS

71.1

DRtg — **best defense in the league**

+95

Season differential

58-55

Final score vs EBB (MD14)

Average start MD1-MD5 (3W/2L), then 8W/1L over the last 9 games. The alternating 2-3 zone defense, the contribution of Y.L. NGARANSOU at the 4 (16 pts/14 reb, best evaluation MD12), and the clutch play of YANN JAMES FONDONG ATABONG (MD14 Title MVP — 21 pts/22 eval) sealed a title won through defensive rigor, not flair.



The 5 numbers of the season

#1

11

B.E.A.C. wins
The champion's record

#2

+125

ALP's differential
Best in the league but
2nd

#3

0.75

PPP allowed by BEA
in the final — airtight
defense

#4

13

MGZ consecutive losses
before the MD14
breakthrough

#5

18.1

PIR/g for
MELINGUI ESSA
Statistical MVP

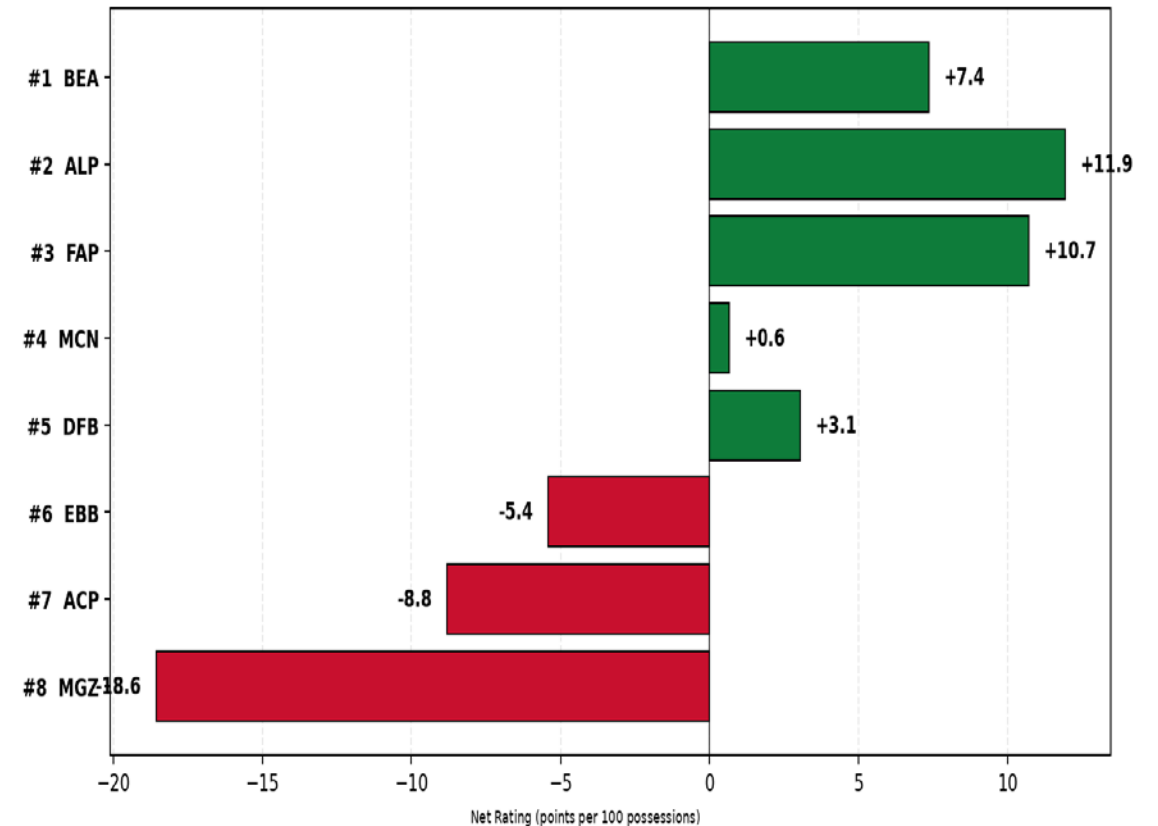


2026 final standings

#	Team	Record	Diff	
1	BEA	11-3	+95	★
2	ALP	11-3	+125	★
3	FAP	9-5	+102	
4	MCN	9-5	+22	
5	DFB	6-8	+40	
6	EBB	5-9	-69	
7	ACP	4-10	-104	
8	MGZ	1-13	-211	

POWER RANKING – Net Rating (ORTg – DRtg)

The difference per 100 possessions, tempo-independent



🔍 **READING THE STANDINGS** · BEA #1 vs ALP #2 by H2H (BEA 2-0) despite ALP's +125 differential · Net Rating = $ORTg - DRtg / 100 \text{ poss.}$ (tempo-independent)



Team tier list

S	<p>TITLE CONTENDERS</p> <p>BEA · ALP</p>	<p>Net Rating > +9 · Depth · Top-3 defense</p>
A	<p>DARK HORSES</p> <p>FAP · MCN</p>	<p>Positive Net Rating · One superstar with support</p>
B	<p>BUBBLE</p> <p>DFB</p>	<p>Expected for a better ranking — loses intensity at end of game — physical preparation</p>
C	<p>REBUILD</p> <p>EBB · ACP</p>	<p>Negative Net Rating · Insufficient depth</p>
D	<p>LOTTERY</p> <p>MGZ</p>	<p>Net Rating –18.6 · Progress, better results expected — in 2027</p>

💡 READING THE TIER LIST

Tiers based on Net Rating + roster depth · S = champion-tier (NR > +9) · A = Solid ranking · B = underperforming · C = rebuild · D = transition



PART 02 · DEEP DIVE

THE 8 TEAMS

Team-by-team overall review

Tactical identity · Advanced statistics · Top scorers · 2027 verdict

BEA

ALP

FAP

MCN

DFB

EBB

ACP

MGZ



BEA

B.E.A.C. BASKETBALL · YOUZOU 2026 Champion



11-3

Diff. +95 · Net +7.4

« Defense is our DNA » — DRtg 71.1 (league record), 8W/1L over the last 9 games

78.4

ORtg

71.1

DRtg

79.9

Pace

11.6

Pythagorean Wins

STRENGTHS

- Best defense in the league (DRtg 71.1) — alternating 2-3 zone mastered
- Exceptional depth: Y.L. NGARANSOU emerges at the 4 (24 eval/14 reb in MD12)
- Clutch confirmed: FONDONG ATABONG MD14 Title MVP (21 pts/22 eval)
- Coach Kevin NGWESE — recipient of the YOUZOU 2026 “OBAH” Trophy

WEAKNESSES

- Least efficient offense in the top-3 (ORtg 78.4 — below the ALP/FAP average)
- Weak 3-point shooting (22.7%) — reliance on interior play

TOP 3 SCORERS

1

FONDONG ATABONG 10.9 PPG · 4.4 RPG · 0.9 APG (12 games · Title MVP)

2

Y.L. NGARANSOU 10.5 PPG · 9.2 RPG · 1.0 APG (8 games · emerging 4)

3

DANIEL AYINA 10.6 PPG · 8.6 RPG · 1.4 APG (14 games · double-double machine)

BEST WIN

vs MCN 76-46 (MD10)

WORST LOSS

vs FAP 53-66 (MD9)

2027 VERDICT · Legitimate title despite a perfectly aligned Pythagorean (11.6 wins). To be confirmed at the BAL — already the most mature profile for the 2027 BAL Conference.



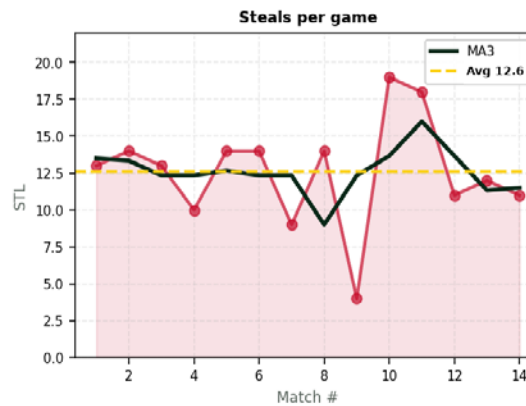
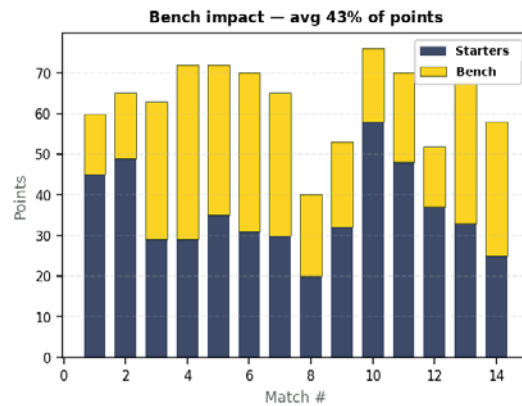
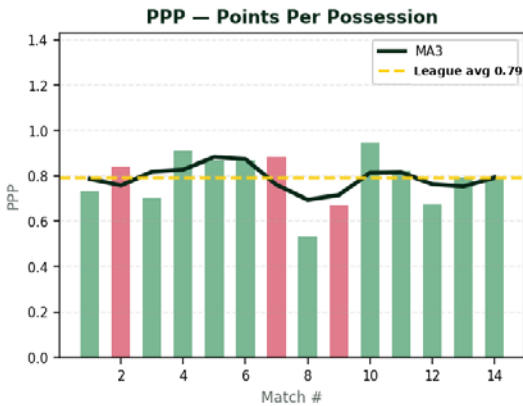
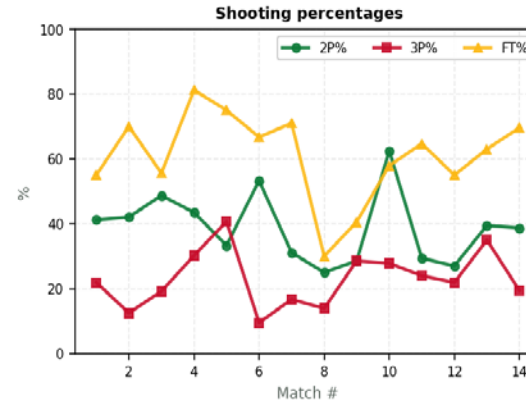
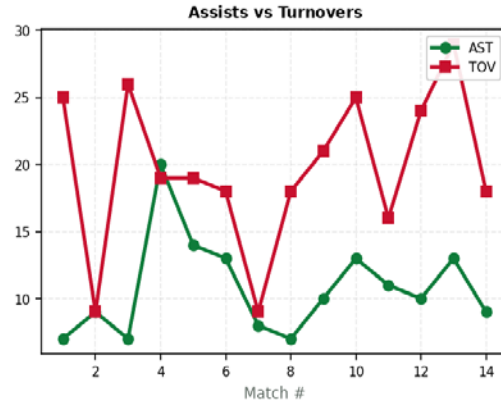
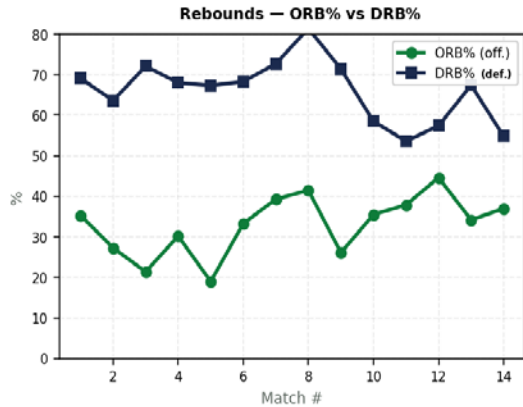
BEA • 2026 SEASON EVOLUTION

B.E.A.C. Basketball • 2026 Champion

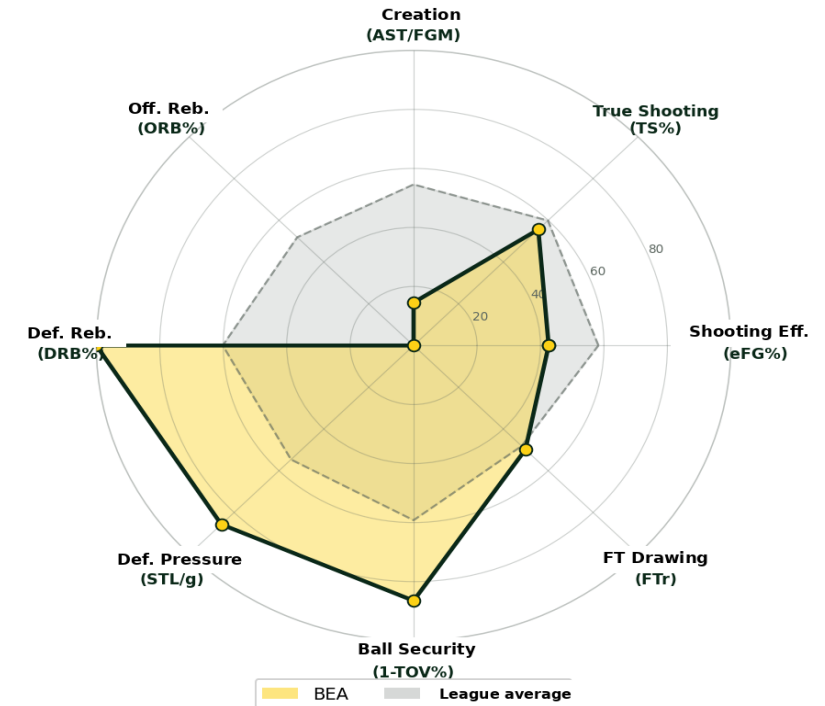


9 indicators • 8 axes

BEA — Season evolution over 14 matchdays



BEA — League Percentile Profile (0 = worst, 100 = best)



MAIN STRENGTH

DRB% stable around 70% across the season • STL consistent at ~12.6 per game • Defense is the identity, never let go.

MOMENTUM

MD8 collapse (40 pts) then crescendo recovery: +30 differential MD10 • Perfect crescendo toward the title.

POINT OF CONCERN

TS% efficiency remains in a low percentile despite the title • The team wins through defense, not through scoring.



ALPH BB YDÉ · 2026 Runner-up



11-3

Diff. +125 · Net +11.9

The statistical steamroller — Net Rating #1 (+11.9), +125 differential league leader

88.2

ORtg

76.3

DRtg

79.1

Pace

12.3

Pythagorean Wins

STRENGTHS

- Best offense in the league (ORtg 88.2) + 2nd best defense (DRtg 76.3)
- FTr 27.9% league leader — draws fouls and capitalizes (+27.9 FTA/100 poss.)
- TOV% 19.9% — #1 offensive cleanliness in the league
- Elite bench: MIENNE EYENE (10.6 PPG, TS% 67.3%) + AYANGMA MOLEMB (9 games, 8.9/5.0)

WEAKNESSES

- Beaten 2-0 by BEA in H2H — loses the title despite superior stats
- No player at ≥18 PPG — distribution so balanced that the clutch hierarchy fades

TOP 3 SCORERS

1 MIENNE EYENE 10.6 PPG · 3.1 RPG · 3 APG (10 games)

2 FOSSO EKANI 9.8 PPG · 4.9 RPG · 1.8 APG (13 games)

3 AYEUNG ZOCK 9.4 PPG · 5.6 RPG · 1 APG (13 games)

BEST WIN

vs MGZ 70-46 (MD3)

WORST LOSS

vs BEA 63-70 (MD6)

2027 VERDICT · Runner-up by H2H, first by every other measure. The window is open — a Stretch Big and the 2027 title is within reach.



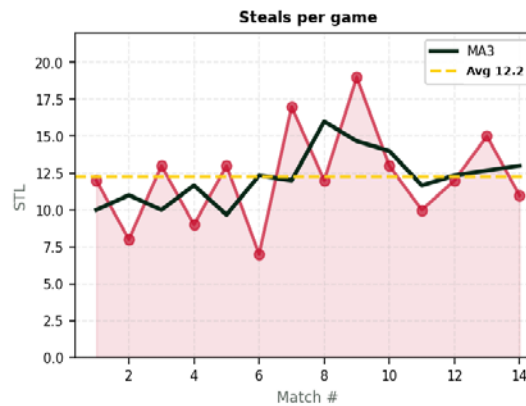
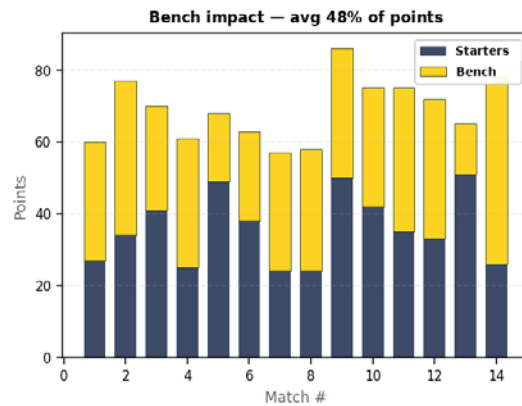
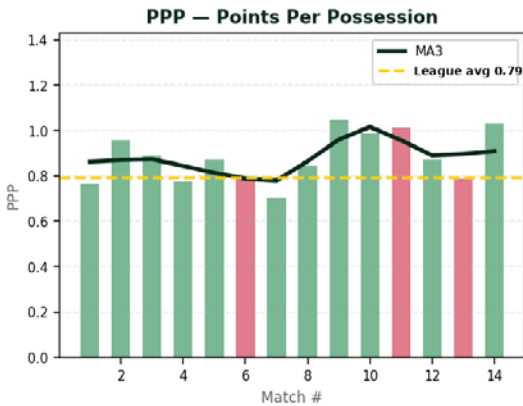
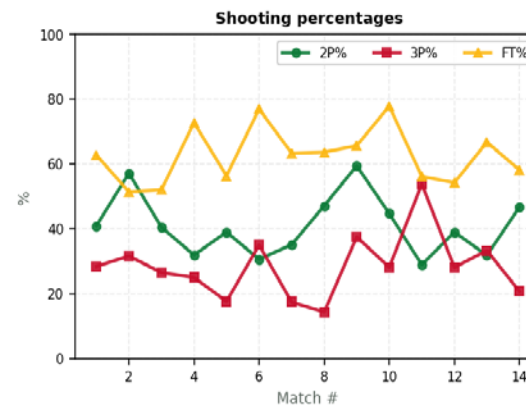
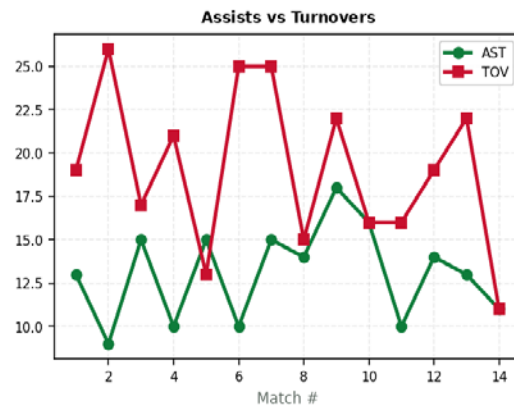
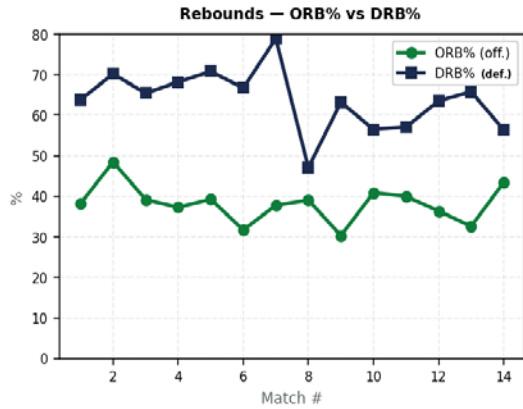
ALP · 2026 SEASON EVOLUTION

ALPH BBK YDÉ · 2026 Runner-up

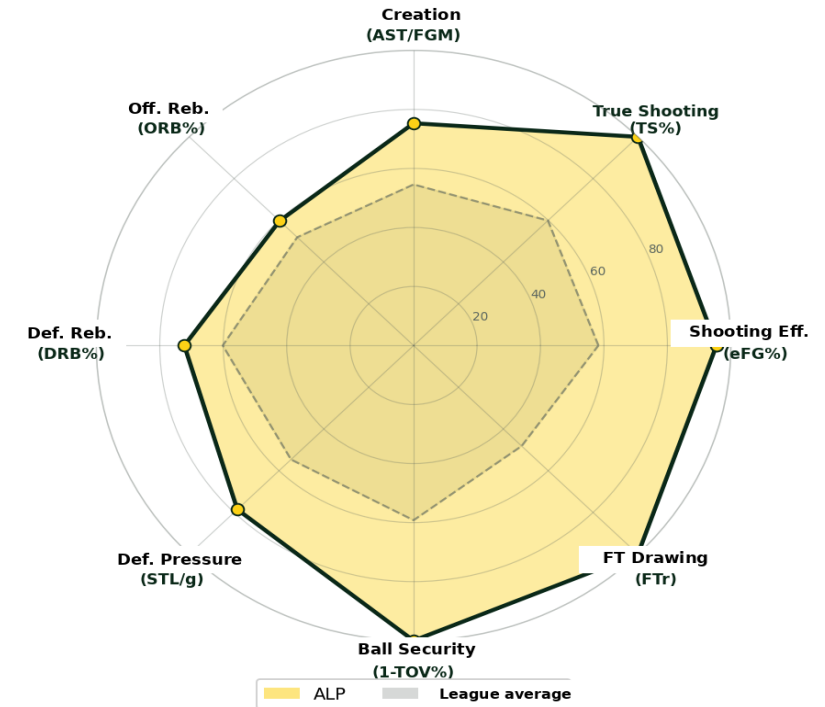


9 indicators · 8 axes

ALP — Season evolution over 14 matchdays



ALP — League Percentile Profile (0 = worst, 100 = best)



OFFENSIVE DOMINANCE

PPP above league average all season · AST/TOV creation ratio top-2 · The most organized offense in Elite One.

ELITE BENCH

A bench consistently producing 30-45 pts/game · MIENNE EYENE and AYANGMA MOLEMB lift the 2nd unit to the level of a starting unit.

BEA WARNING

Beaten 2-0 by BEA in H2H despite superior stats · Glaring lack of answer against their direct opponent's zone defense.



FAP

F.A.P. BASKETBALL · Forces Armées Populaires



9-5

Diff. +102 · Net +10.7

The team of offensive rebounding — ORB% 41.3% league record, eFG% 40.6% league leader

86.8
ORtg

76.1
DRtg

82.6
Pace

11.9
Pythagorean Wins

STRENGTHS

- ORB% 41.3% — outright league record (1 offensive ball recovered out of 2.4)
- eFG% 40.6% leader — most efficient shot selection of any team
- MELINGUI ESSA — YOUZOU 2026 MVP, 18.1 PIR/g, 8 double-doubles, the most complete center
- Highest tempo (Pace 82.6) — exploits space in transition

WEAKNESSES

- Pythagorean projected 11.9 wins → only 9 actual: -2.9 wins of underperformance
- Short depth beyond MELINGUI ESSA — vulnerable to key injuries

TOP 3 SCORERS

- 1 MELINGUI ESSA** 12.6 PPG · 10.5 RPG · 1 APG (13 games)
- 2 GASSINA HERMANNBEL** 9.4 PPG · 5.8 RPG · 1.7 APG (10 games)
- 3 AMOU'OU AMBASSA** 9.3 PPG · 3 RPG · 0.7 APG (13 games)

BEST WIN
vs MGZ 81-51 (MD13)

WORST LOSS
vs ALP 47-58 (MD8)

2027 VERDICT · Frustrating season (Pythagorean said 12 wins) — with a Stretch Big alongside MELINGUI, FAP becomes a 2027 title contender.



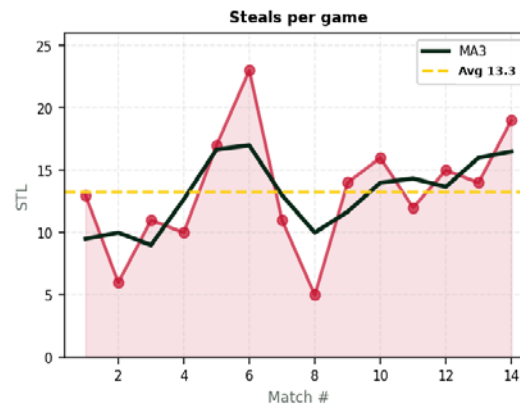
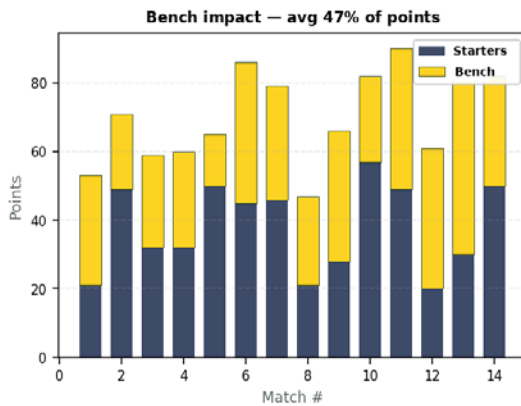
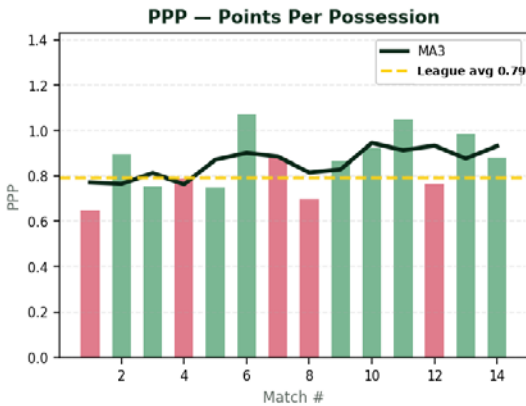
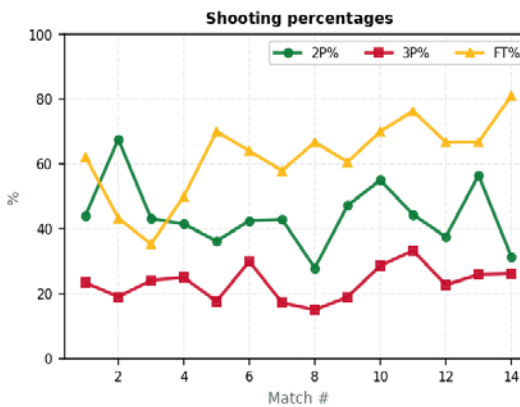
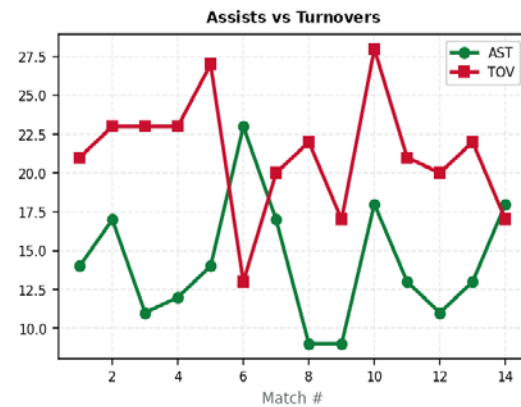
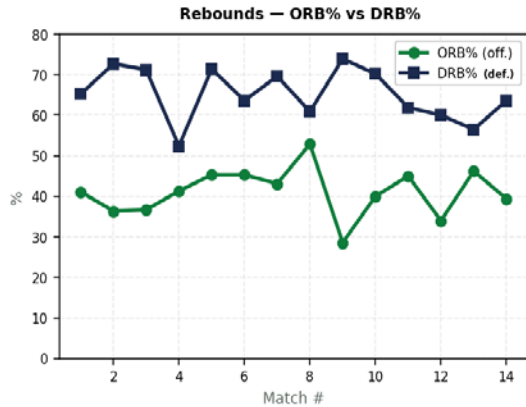
FAP · 2026 SEASON EVOLUTION

F.A.P. Basketball · Forces Armées Populaires

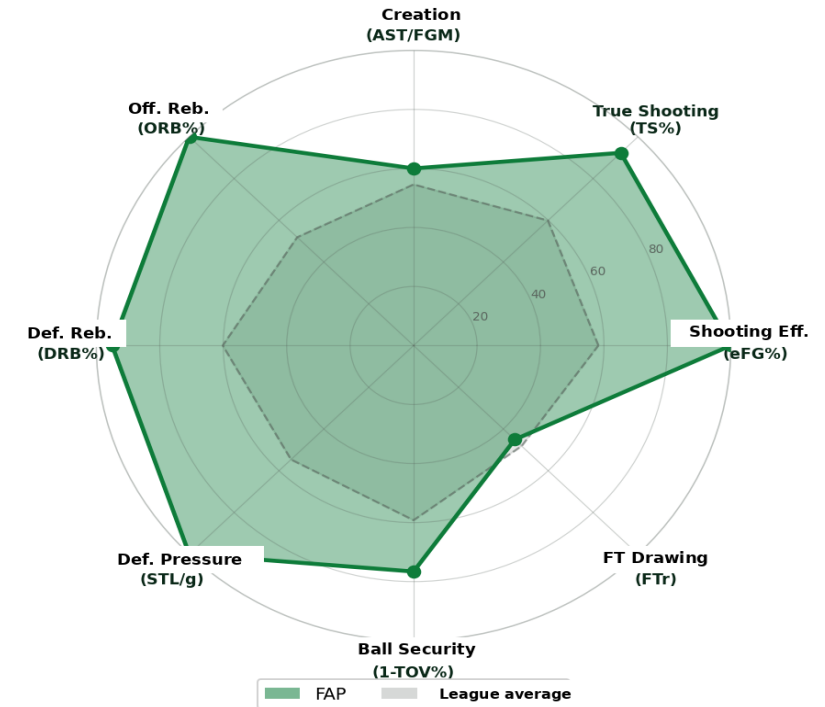


9 indicators · 8 axes

FAP — Season evolution over 14 matchdays



FAP — League Percentile Profile (0 = worst, 100 = best)



KING OF OFFENSIVE REBOUNDING
 ORB% above 35% in 11/13 games · Season league record 41.3% · A 2nd chance on 1 of every 2.4 balls guaranteed.

MELINGUI EFFICIENCY
 PPP directly correlated with MELINGUI ESSA's presence · 8 double-doubles in 13 games · Deserving statistical MVP.

CRITICAL INJURIES
 Losses concentrated in games where the rotation was stretched · Short depth beyond the starting five.



MCN

MC NOAH



9-5

Diff. +22 · Net +0.6

The league's most overachieving team (+1.5 wins vs Pythagorean) — elite defense, limited offense

76.8

ORtg

76.2

DRtg

81.6

Pace

7.5

Pythagorean Wins

STRENGTHS

- MPOUDI EYAMBE — YOUZOU 2026 DPOY, Stocks 5.02/40 (outright league record)
- AST/FGM 0.60 — best team passing in the league
- Top-3 defense (DRtg 76.2) — solid base for a playoff upset

WEAKNESSES

- TOV% 23.0% — 2nd worst in the league, hemorrhage of turnovers
- ORtg 76.8 — offense below league average, too dependent on DONFACK MOMO
- eFG% 38.1% — lack of pure scorers besides MPOUDI/DONFACK

TOP 3 SCORERS

1

DONFACK MOMO 11.2 PPG · 8.5 RPG · 1.8 APG (13 games)

2

ANDREW LUCKY SIAKONANA 8.7 PPG · 3.6 RPG · 2.3 APG (13 games)

3

MPOUDI EYAMBE 6.2 PPG · 7.2 RPG · 0.5 APG (13 games)

BEST WIN

vs MGZ 67-46 (MD7)

WORST LOSS

vs BEA 46-76 (MD10)

2027 VERDICT · *If MCN adds a backcourt scorer to MPOUDI/DONFACK, the team can join BEA/ALP at the top. Depth to invest in.*



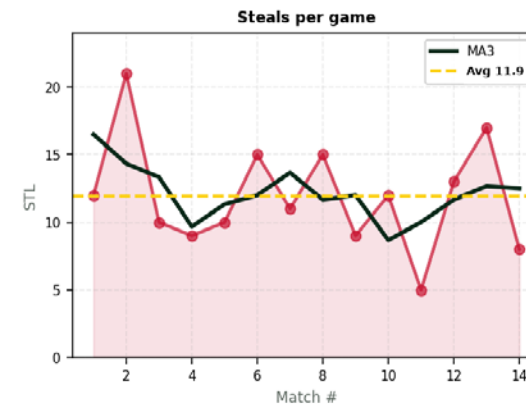
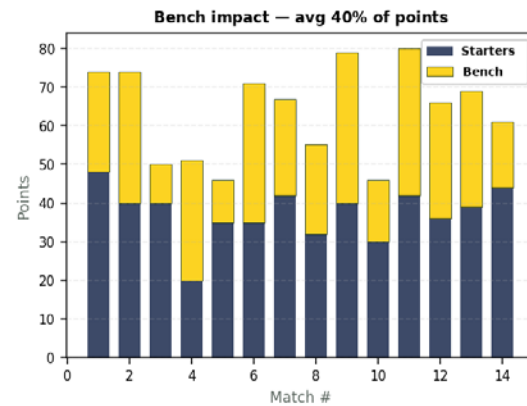
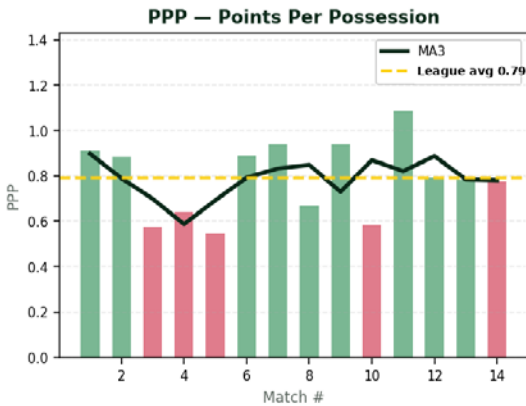
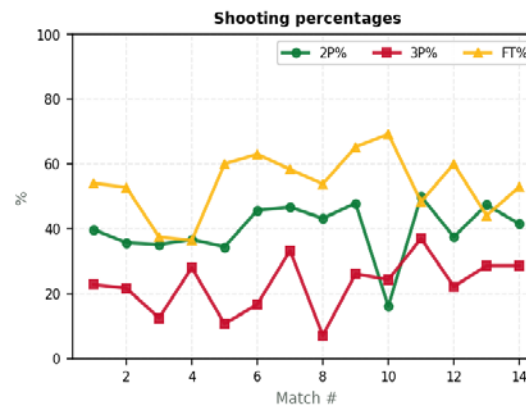
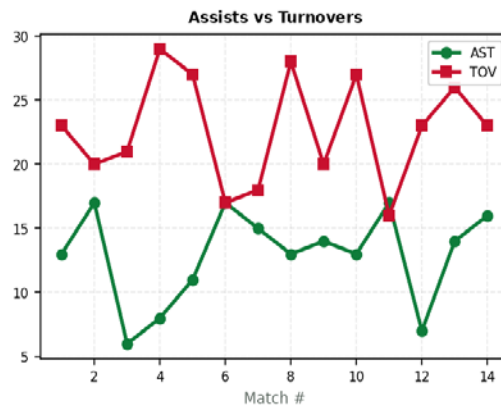
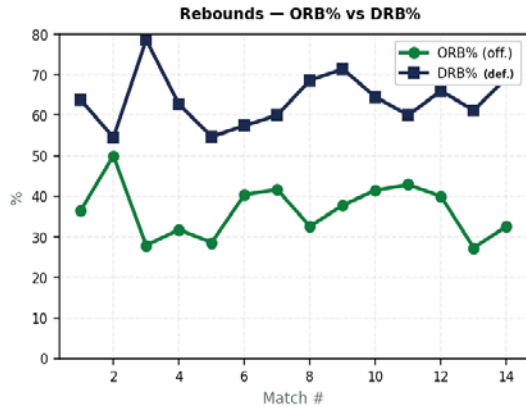
MCN · 2026 SEASON EVOLUTION

MC NOAH · League's most overachieving team

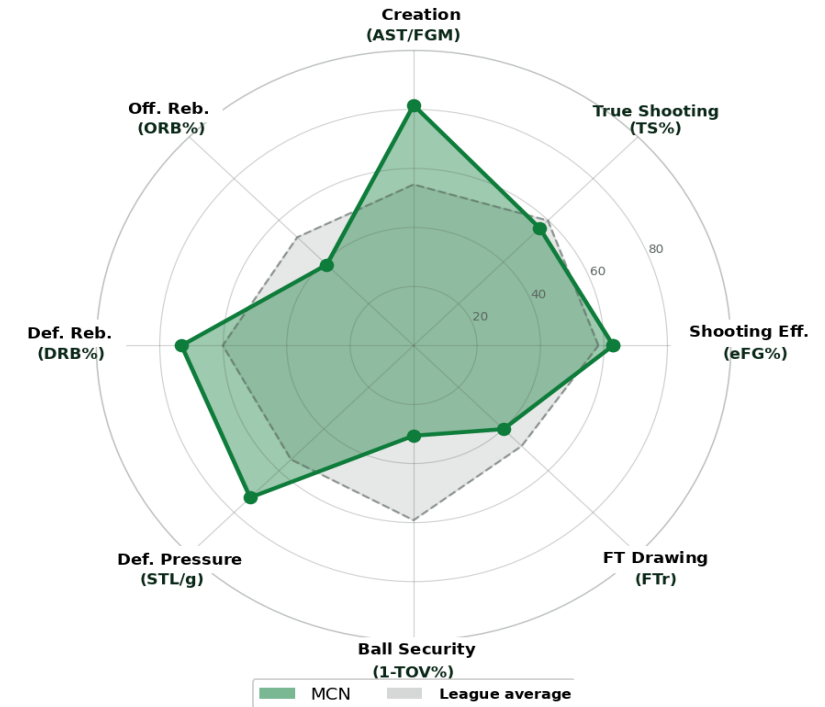


9 indicators · 8 axes

MCN — Season evolution over 14 matchdays



MCN — League Percentile Profile (0 = worst, 100 = best)



DPOY DEFENSE

STL consistently above average · MPOUDI EYAMBE Stocks 5.02/40 outright record · Top-3 defense in the league.

TEAM PLAY

AST/FGM 0.60 — best ball-sharing in the league · Collective creation that maximizes the limited individual scoring.

TOV HEMORRHAGE

TOV% 23% deep dips in the losses · Catastrophic turnovers in crucial games against the top-3.

The most negative luck factor in the league — Pythagorean projected 9 wins, only 6 achieved

79.9

ORtg

76.8

DRtg

81.1

Pace

9.1

Pythagorean Wins

STRENGTHS

- Net Rating +3.1 — performance of an above-.500 team
- ORB% 39.3% — top-3 in the league in offensive rebounding
- EKOUMEDIMITHE II: 11.2 PIR/g — deserving All-League 2nd Team

WEAKNESSES

- TOV% 24.4% — worst in the league — outright, the very identity of bad luck
- Differential +40 but 6-8 — close games lost, missed clutch finishes
- No defensive anchor — DRtg 76.8 average, nothing more

TOP 3 SCORERS

1 **EKOUME DIMITHE II** 13.9 PPG · 7.1 RPG · 1.4 APG (11 games)

2 **NOULLA NGUITDAM** 10.4 PPG · 6.1 RPG · 0.3 APG (14 games)

3 **ONGAGNE EBELL** 9.4 PPG · 4.1 RPG · 1.6 APG (13 games)

BEST WIN

vs ACP 66-36 (MD3)

WORST LOSS

vs MCN 57-71 (MD6)

2027 VERDICT · DFB is THE #1 positive-progression candidate for 2027 (+3 projected wins). With a TOV% reduction, direct return to the top-4.



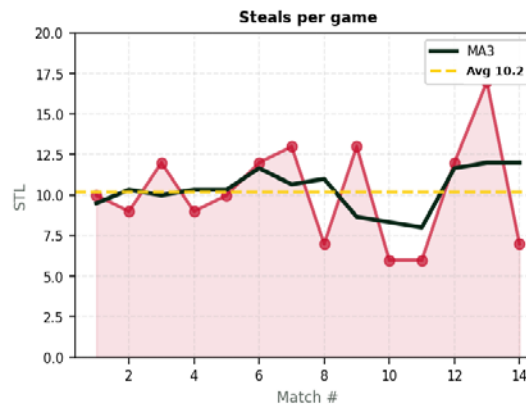
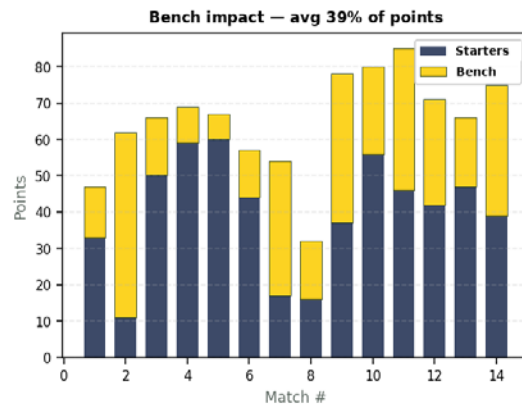
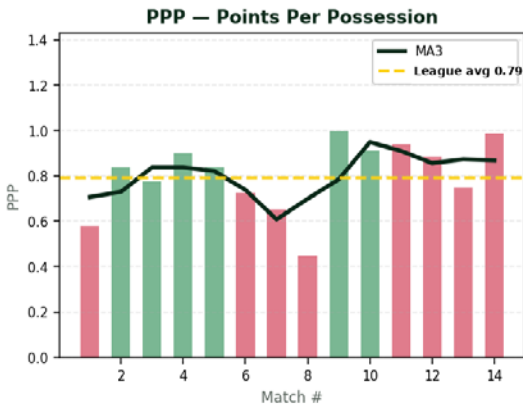
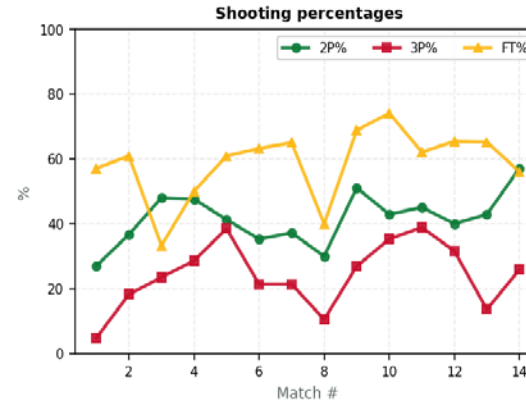
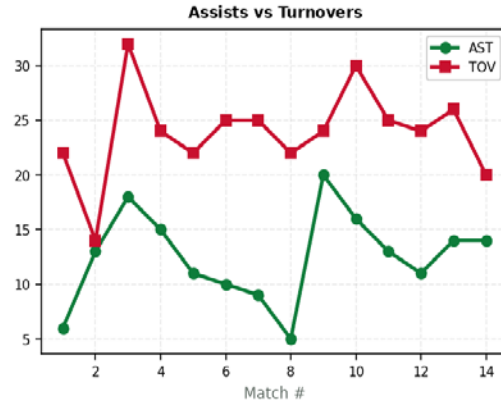
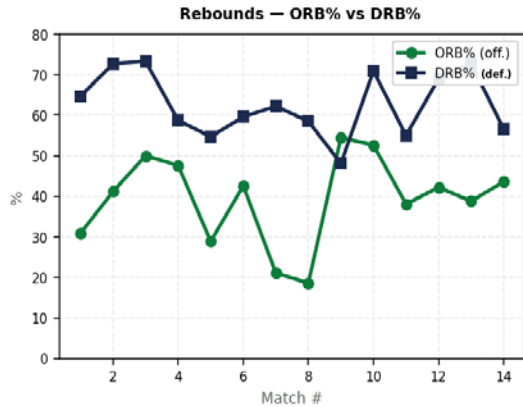
DFB · 2026 SEASON EVOLUTION

Douala Fire Birds · The luck factor

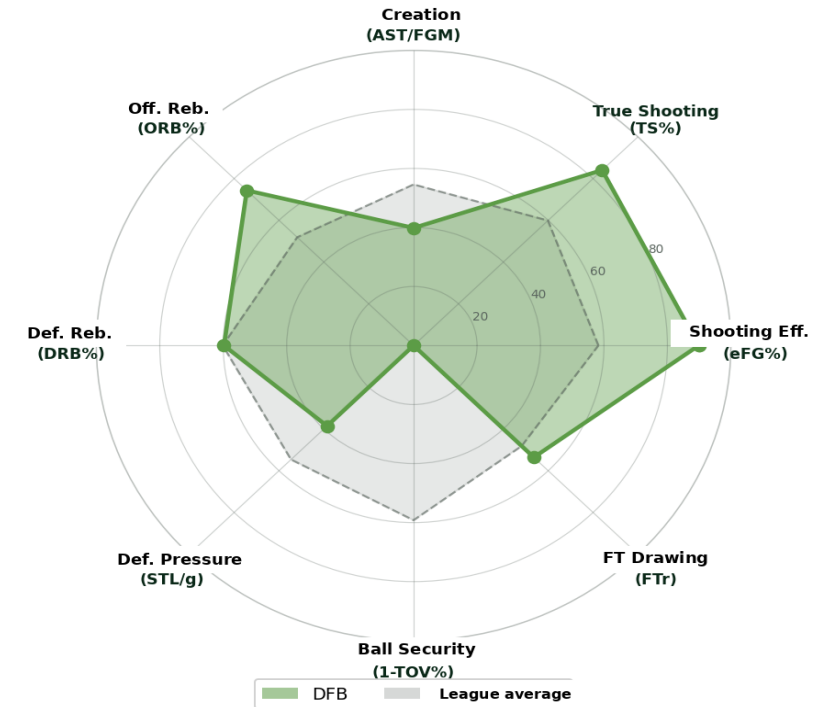


9 indicators · 8 axes

DFB — Season evolution over 14 matchdays



DFB — League Percentile Profile (0 = worst, 100 = best)



ELITE CREATION

EKOUMEDI MITHE II 13.9 PPG over 11 games · 11.2 PIR/g · The offensive engine carries the load over the entire tempo, but loses steam — late in games.

ABOVE-.500 OFFENSE

Differential +40 over 14 games · Net Rating +3.1 · Plays at the level of an above-.500 team on paper.

CATASTROPHIC TOV

TOV% 24.4% worst in the league · Turnovers cost 3+ close games · The only truly measurable handicap.



EBB

EBB BASKETBALL



5-9

Diff. -69 · Net -5.4

Raw talent without cohesion — DJIPBOUONG the highest individual ceiling in the league (25.8 PIR/g over 5 games)

78.8

ORtg

84.2

DRtg

78.5

Pace

4

Pythagorean Wins

STRENGTHS

- DJIPBOUONG: 25.8 PIR/g over 5 games — MVP-quality ceiling before injury
- MOUATCHO TCHIENCHEU: 13.3 PPG over 11 games — deserving All-League 2nd Team
- Lowest eFG% in the bottom group (35.9) despite the talent — a system problem

WEAKNESSES

- DRtg 84.2 — worst defense among non-tanking teams
- eFG% 35.9% — worst shot selection in the top-7
- Structural injuries: without DJIPBOUONG, insufficient rotation

TOP 3 SCORERS

1

DJIPBOUONG 15.8 PPG · 15.4 RPG · 1.6 APG (5 games)

2

MOUATCHO TCHIENCHEU 13.3 PPG · 2.3 RPG · 1.9 APG (11 games)

3

NDJEPENDA PAMGA 8.3 PPG · 4.9 RPG · 1.3 APG (7 games)

BEST WIN

vs MGZ 61-52 (MD11)

WORST LOSS

vs ALP 57-77 (MD2)

2027 VERDICT · The talent is there, the system isn't. If EBB keeps DJIPBOUONG healthy and signs a post defender, playoff return is assured.



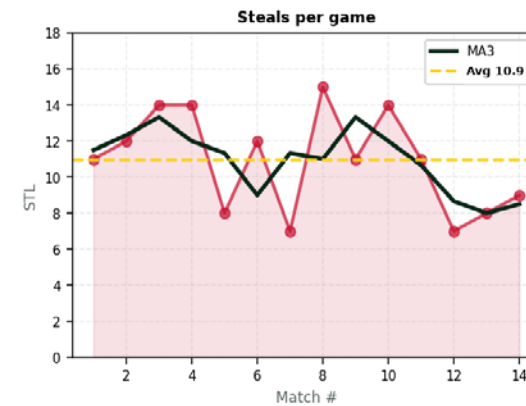
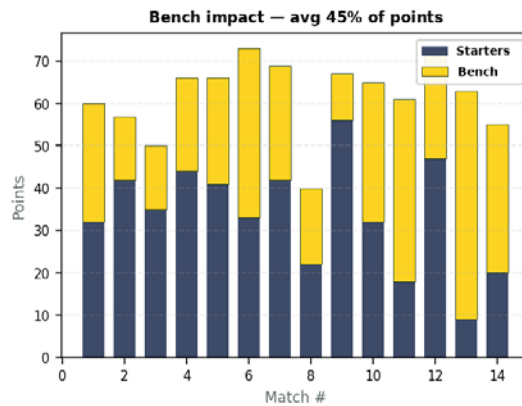
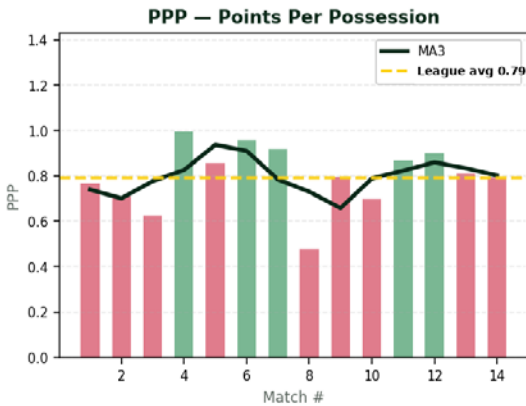
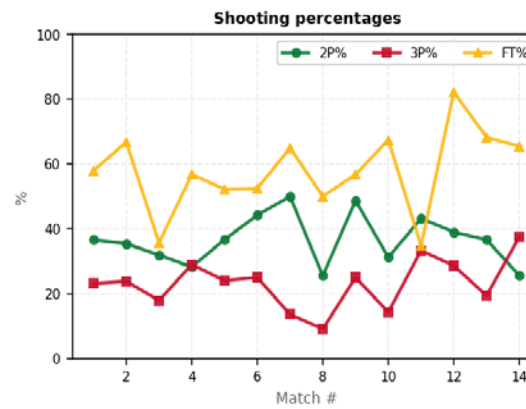
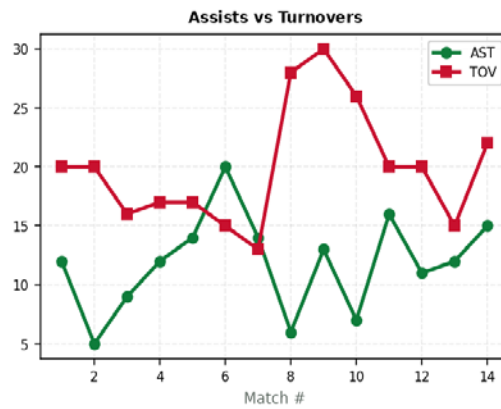
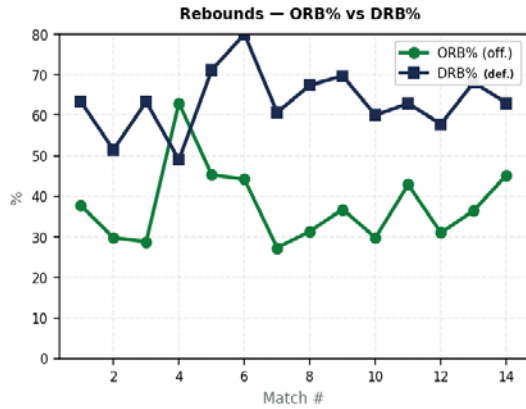
EBB · 2026 SEASON EVOLUTION

École de Basketball · Raw talent

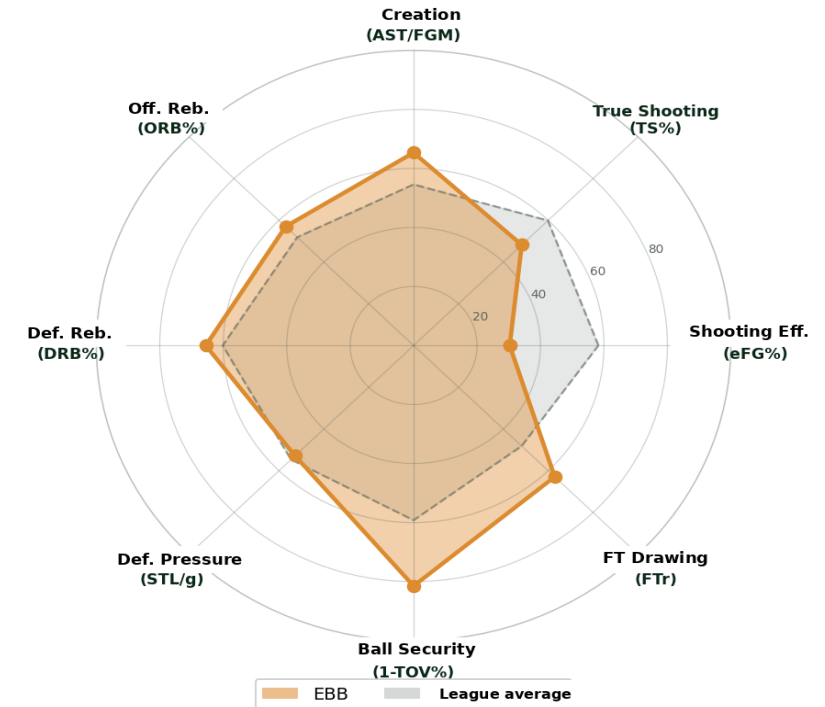


9 indicators · 8 axes

EBB — Season evolution over 14 matchdays



EBB — League Percentile Profile (0 = worst, 100 = best)



HIGH CEILING

DJIPBOUONG 25.8 PIR/g over 5 games before injury · The outright highest individual ceiling of the 2026 league.

3PT EFFORT

3P% 23.3% above league average · Volume of attempts that forces opposing defenses to stretch.

DEFENSE IN CRISIS

DRtg 84.2 — worst defense among non-tanking teams · Recurring collapses giving up 30+ pts in transition.



ACP

BASKETBALL · ACP



4-10

Diff. -104 · Net -8.8

Pace 84.0 highest in the league — aims to run but with insufficient accuracy

75.4

ORtg

84.2

DRtg

84

Pace

2.4

Pythagorean Wins

STRENGTHS

- MINLEND BASSOUGUE: 11.4 PPG iron man, the only one shining in the bottom half
- Pace 84.0 — the offensive philosophy exists (high tempo)
- +1.6 Pythagorean luck wins — the team slightly outperforms its stats

WEAKNESSES

- DRB% 58.7 — outright worst in the league, gives up opponent 2nd shots
- DRtg 84.2 — worst defense in the league, tied with EBB
- 3P% 21.0% — unable to punish defenses that drop back

TOP 3 SCORERS

1

MINLEND BASSOUGUE 11.4 PPG · 4.2 RPG · 2.1 APG (14 games)

2

KOULARABAI 10 PPG · 6.9 RPG · 0.7 APG (14 games)

3

ADONIS ABEP ANDREW SIEUDJOU 7.9 PPG · 4.4 RPG · 2.2 APG (14 games)

BEST WIN

vs MGZ 60-44 (MD8)

WORST LOSS

vs DFB 36-66 (MD3)

2027 VERDICT · *Young team with strong potential; — improving. Drafting a rim protector (DRB%) + a 3pt shooter = +5 wins immediately.*



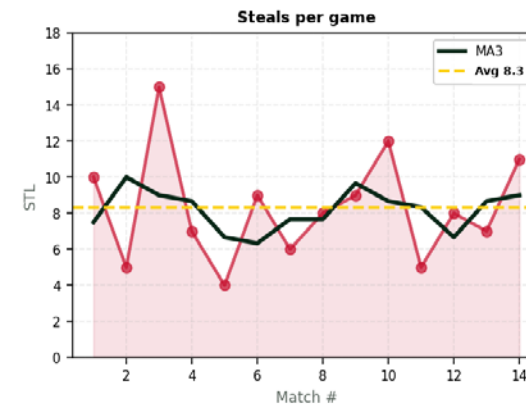
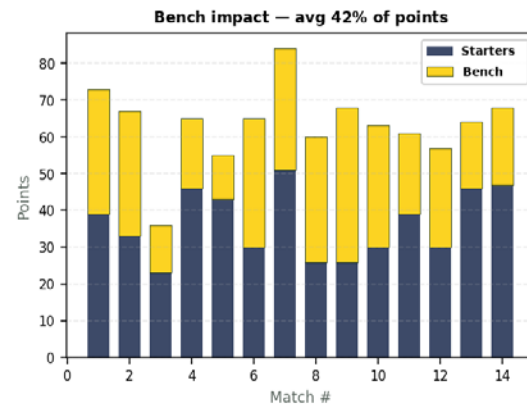
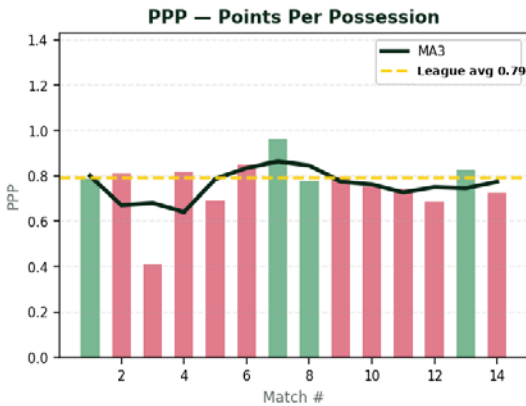
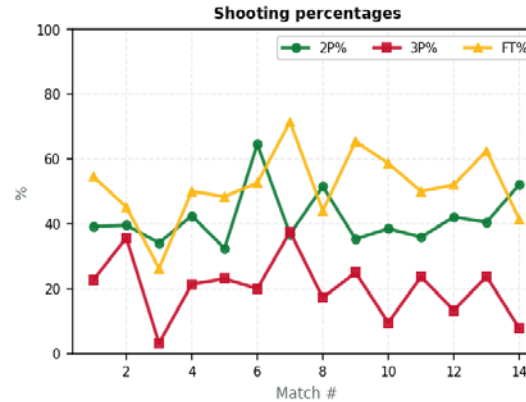
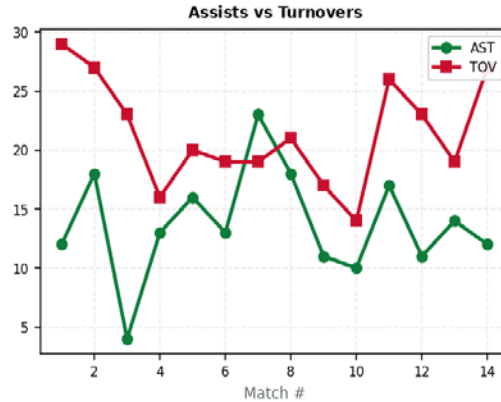
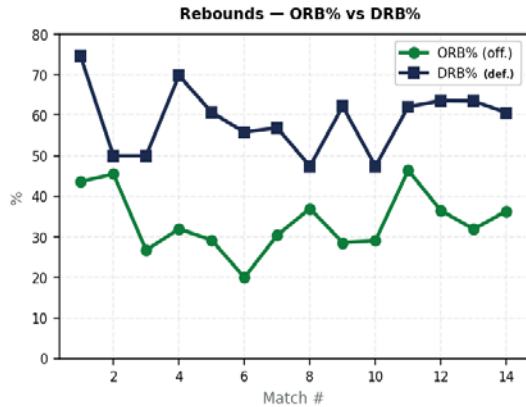
ACP · 2026 SEASON EVOLUTION

ACPBA · Highest tempo

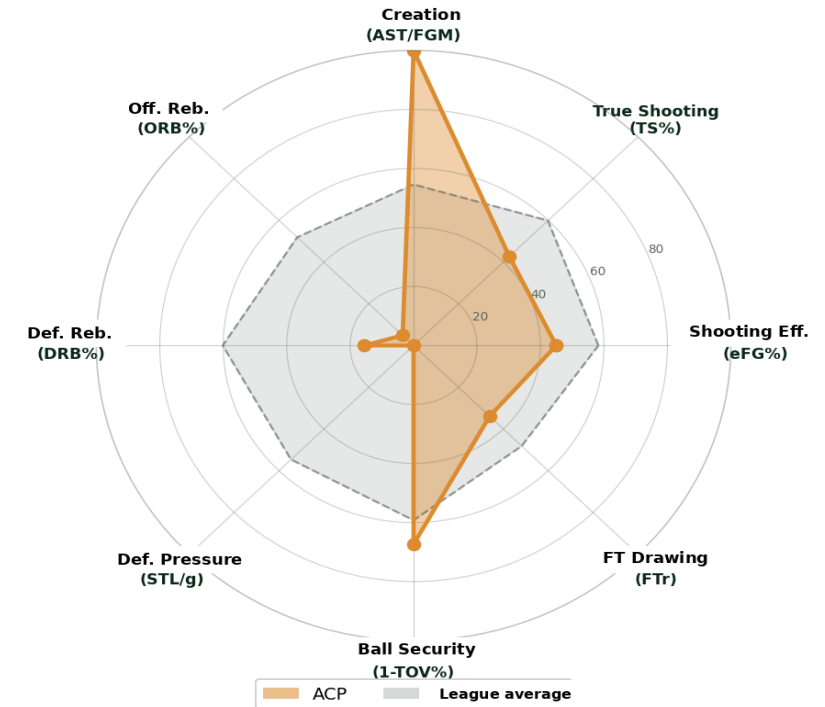


9 indicators · 8 axes

ACP — Season evolution over 14 matchdays



ACP — League Percentile Profile (0 = worst, 100 = best)



PACE LEADER

Pace 84.0 highest in the league · Constant willingness to run · When the offense finds its rhythm, explosive scores.

MINLEND IRON MAN

MINLEND BASSOUGUE 11.4 PPG over 13 games · Only reliable player in the bottom half · A cornerstone to keep.

CATASTROPHIC DRB%

DRB% 58.7% worst in the league · 4 defensive boards out of 10 given away · Opponents constantly get 2nd shots.



MGZ

MAGZI BASKETBALL · 2026 Cellar

1-13

Diff. -211 · Net -18.6

A season of resilience — 0 wins in the first 13 games, MD14 breakthrough vs MCN

69.8
ORtg

88.4
DRtg

77.5
Pace

0.4
Pythagorean Wins

STRENGTHS

- MOUSSA ABDELSALAM: YOUZOU 2026 Iron Man — 360 min over 14/14 games
- ORB% 39.8% — offensive rebounding effort never wavered
- MD14 breakthrough vs MCN 62-61 — 1st and only win of the season

WEAKNESSES

- Net Rating -18.6 — worst gap in the league, by far
- eFG% 33.8% — outright worst in the league, catastrophic shot selection
- FTr 15.3% (worst in the league) + Pythagorean 0.4 projected win

TOP 3 SCORERS

- 1 ERIC SIEGFRIED DEFFO** 9.5 PPG · 9.4 RPG · 1 APG (13 games)
- 2 MOUSSA ABDELSALAM** 8.1 PPG · 5.9 RPG · 1.7 APG (14 games)
- 3 DELPHIN JOAN DIM** 8 PPG · 5.4 RPG · 1.2 APG (13 games)

BEST WIN
vs MCN 62-61 (MD14)

WORST LOSS
vs FAP 51-81 (MD13)

2027 VERDICT · Confirmation of progress required. Priority signings: a creative point guard + a reliable scorer. 2027 will be a transition season.

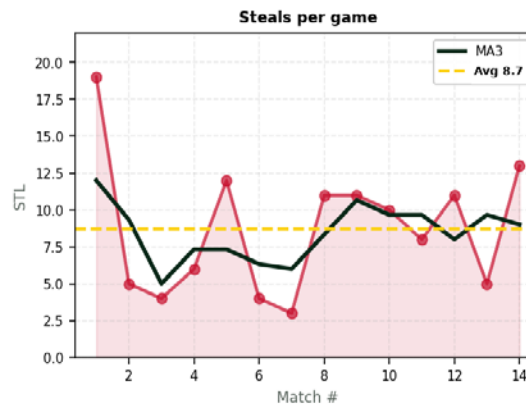
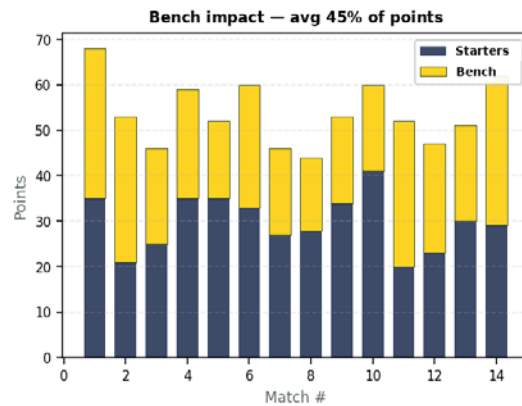
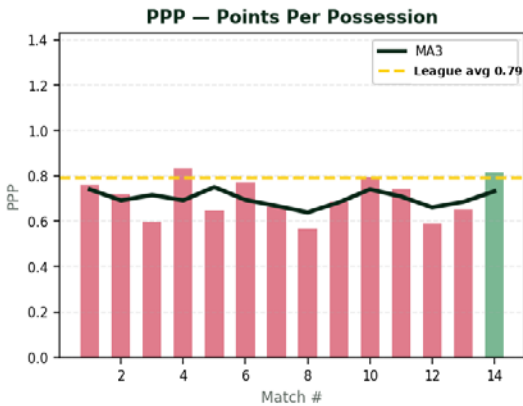
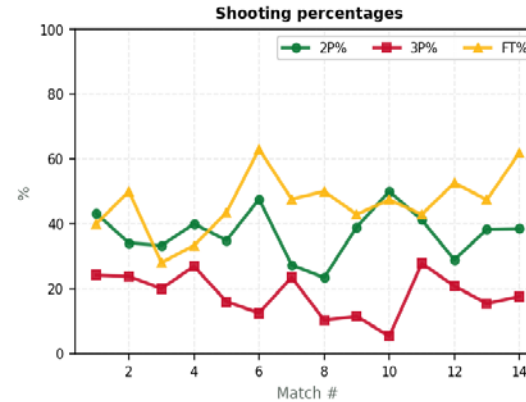
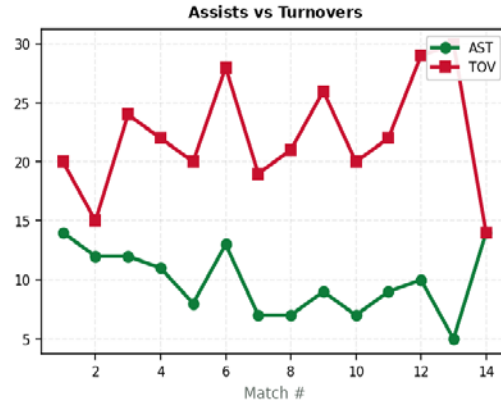
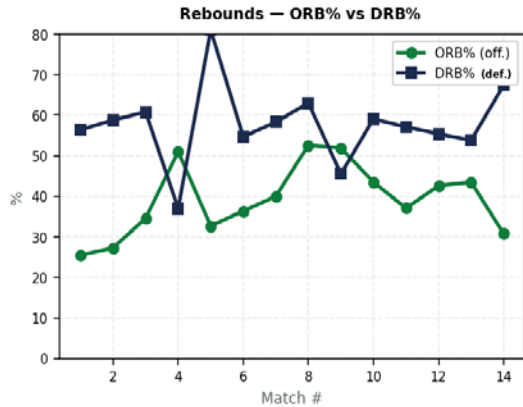


MGZ · 2026 SEASON EVOLUTION

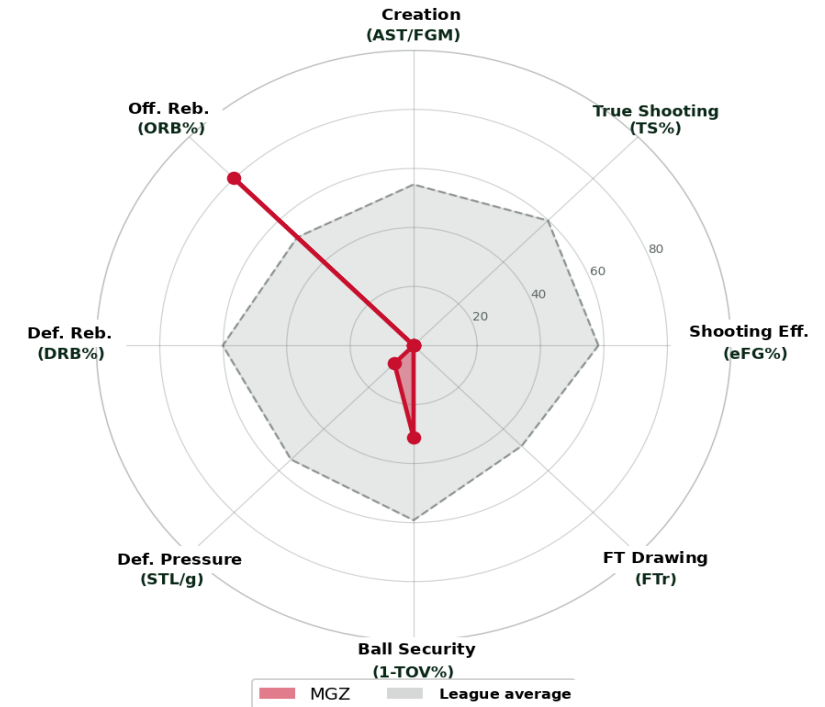
Moungo Zone · 2026 Cellar

9 indicators · 8 axes

MGZ — Season evolution over 14 matchdays



MGZ — League Percentile Profile (0 = worst, 100 = best)



OFFENSIVE REBOUND EFFORT

ORB% 39.8% top-3 in the league · The only indicator where MGZ competes · Aggressive rebounding has been constant.

MD14 BREAKTHROUGH

1st win of the season vs MCN 62-61 · Clutch final score, airtight defense · A glimmer for 2027.

EVERYTHING ELSE

Ortg 69.8 · DRtg 88.4 · eFG 33.8% · 3 major indicators outright worst in the league · Structural overhaul essential.



PART 03 · ACTION PLAN

2026 OFFSEASON

Precise recommendations, team by team

Quantified drills · Roster targets · Quantified 2027 season goals

"Talent wins games. Work between seasons wins titles."

PRIORITY DIAGNOSIS

Champion but ORtg 78.4 (below top-3 average) · 3P% 22.7% weak · TS% 41.2% — wins through defense, must improve in scoring

DAILY DRILLS

Technical & physical work

■ OUTSIDE SHOOTING

500 3pt shots/day · 5 specific sessions/week · target game-speed catch-and-shoot

■ PICK-AND-ROLL + POP

1h/day with strong reads · defensive reading decisions · 50 reps right/left

■ DEFENSE (maintain)

Preserve alternation · 2/3 tactical sessions/week · don't let up

■ CONDITIONING / CARDIO

Maintain intensity for 4 quarters · 45-min circuit × 3/week

ROSTER MOVES & TACTICS

Signings and schemes

■ SIGN

1 shooting wing of the 3-and-D type (38%+ 3pt) · profile FONDONG confirmed as starter

■ BUILD OUT THE ROTATION

Bench already strong, add 1 creative backup PG (8-10 min/game) and discipline

■ BAL PREPARATION

2 FIBA Africa preparations · tactical camps against Maghrebi/Central African styles

■ STAFF

Add a dedicated video analyst · scout the 2027 BAL Conference opponents

2027 GOALS

Measurable quantified KPIs

■ DEFEND THE TITLE

Record ≥ 11-3 · finish top-2 in the regular season · win H2H vs ALP

■ ORtg 78.4 → 85

+6 ORtg points · scoring improvement without sacrificing defense

■ 3P% 22.7 → 30%

+7 points gained on team 3pt% · volume ≥ 22 attempts/game

■ BAL 2027

Represent Cameroon honorably in the BAL Conference · target the quarterfinals



B.E.A.C. → BAL 2027

Basketball Africa League qualification & preparation plan



ATHLETIC PREPARATION

- ▶ BAL Pace ~85 vs YOUZOU 80 — specific cardio conditioning
- ▶ 3P% 22.7 → 32% (BAL avg. 33%) — shooting sessions 600 shots/day
- ▶ BAL physicality >> Elite One — strength program 4x/week
- ▶ Reading the BAL defense: 4 styles (Egyptian zone, Tunisian switch, Angolan PnR, athletic South African)

STAFF & SUPPORT

- ▶ FIBA-level certified strength & conditioning coach
- ▶ Dedicated video analyst + scouting of 8 main BAL teams
- ▶ Mental performance coach — international pressure management
- ▶ Sports doctor + 2 physiotherapists — avoid injuries over a long season

ROSTER & SIGNINGS

- ▶ 2 BAL-experienced players
- ▶ 1 diaspora player cm (NCAA D1 / European 2nd division)
- ▶ 1 closer scoring 18+ PPG
- ▶ Depth of 10 high-level players minimum (BAL = tight tournament format)

2027 BAL GOALS

- ▶ Stage 1: Elite 16 qualification — top 4 in the West Conference
- ▶ Stage 2: BAL group stage — 2 minimum wins out of 5
- ▶ Stage 3 (ambition): BAL quarterfinal (top 8 in Africa)
- ▶ Symbol: 1st Cameroonian qualification since FAP 2017

PRIORITY DIAGNOSIS

Net +11.9 · loses the H2H 0-2 vs BEA · no player at ≥18 PPG — missing a clutch closer on an otherwise league-perfect team

DAILY DRILLS

Technical & physical work

■ OFFENSE vs 2-3 ZONE

1h/day: skip pass, high-post entry, short corner · 30 reps × 4 anti-zone schemes · Perfection of transition offense

■ CLUTCH SCORING

MIENNE EYENE in isolation: 50 end-of-possession reps/day · target defensive reading

■ END OF QUARTER

Last-possession 5v5 drills · 20 reps/week · tied/+3/-3 scenarios

■ ELITE PICK-AND-ROLL

MOLEMB ball-handler + AYEUNG ZOCK roll man · 100 reps/day · switch/drop/blitz reading

ROSTER MOVES & TACTICS

Signings and schemes

■ SIGN

1 closer at 18+ PPG · scorer able to create his own shot in clutch (Damian Lillard type)

■ KEEP THE BENCH

Re-sign MIENNE EYENE and MOLEMB · the depth advantage is priceless

■ STRETCH BIG

Target #1: 3pt-shooting big (35%+ on volume) · opens up driving lanes for MOLEMB

■ DEFENSIVE STAFF

Assistant coach specialized in individual defense · DRtg 76.3 → 72

2027 GOALS

Measurable quantified KPIs

■ WIN THE TITLE

11-3 minimum · win H2H vs BEA (at least 1 of 2)

■ 1 SCORER AT ≥ 16 PPG

Emergence of a go-to scorer · deserving All-League 1st Team profile

■ DRtg 76.3 → 72

Progress by 4 defensive points · target #1 defense in the league

■ BAL PRE-QUALIFICATION

If BEA is out, take over in the BAL Conference as a replacement

PRIORITY DIAGNOSIS

Pythagorean projected 12 wins → 9 actual: Short depth beyond MELINGUI · Absent Stretch Big = limited ceiling

DAILY DRILLS

Technical & physical work

MELINGUI POST-UP

100 reps/day fadeaway and drop step · diversify the scoring arsenal vs double-team

TEAM OUTSIDE SHOOTING

500 3pt shots/day for the wings · target spacing around MELINGUI

TRANSITION OFFENSE

Pace 82.6 league leader: maintain · early-offense drills 30 reps/day

CLUTCH PROTECTION

Closing-minutes drill · 5v5 simulation final 4 min · 3x/week

ROSTER MOVES & TACTICS

Signings and schemes

PRIORITY #1: STRETCH BIG

Center/PF able to shoot 3pt (32%+) · opens the interior for MELINGUI · Brook Lopez profile

BACKUP FOR MELINGUI

Solid center for 15+ min/game · secures minutes off the MVP · rim protector profile

CREATIVE POINT GUARD

True point guard 5+ APG · feeds MELINGUI in the pick-and-roll

MEDICAL STAFF

Injury prevention · MELINGUI played 13/14 games: must play 14/14 in 2027

2027 GOALS

Measurable quantified KPIs

TOP-3 PLAYOFFS

11-3 or 10-4 · convert the Pythagorean into actual wins — = national title

MELINGUI back-to-back MVP

Sustain 18+ PIR/g · target 10 double-doubles

ORB% 41.3 → 38

Reduce reliance on offensive rebounding via better shot selection (eFG 40.6 → 45)

TOV% 20.9 → 18

Ball discipline · cost of Pythagorean bad luck



PRIORITY DIAGNOSIS

TOV% 23.0% (2nd worst in the league) · ORtg 76.8 below average · too dependent on DONFACK MOMO on offense · MPOUDI DPOY; but in need of a backcourt scorer

DAILY DRILLS

Technical & physical work

■ BALL HANDLING

1h/day defensive-pressure drills · 2-ball, full-court, double-team · TOV% 23 → 19

■ DUAL PICK-AND-ROLL

PG + DONFACK and/or MPOUDI as roll men · 100 reps/day · best team passing to exploit

■ MID-RANGE

500 shots/day 12-16 ft · DONFACK and SIAKONANA · fill the eFG% 38.1 gap

■ ROTATING DEFENSE

Maintain DRtg 76.2 · help-and-recover drills 4x/week

ROSTER MOVES & TACTICS

Signings and schemes

■ PRIORITY: SCORING GUARD

SG/SF at 14+ PPG, 35% 3pt · relieves DONFACK · junior Bradley Beal profile

■ STRETCH WING

3-and-D wing · covers top attackers and spaces the pick-and-roll

■ BACKUP FOR MPOUDI

Mobile center · preserves the DPOY (199 min/14 games = under-used!)

■ ORtg TACTICS

Offensive coach · install a motion/FLEX system favoring ball movement (AST/FGM 0.60 = an asset)

2027 GOALS

Measurable quantified KPIs

■ TOP-3 IN THE LEAGUE

Record ≥ 10-4 · clear the serious tier · upset the top-2 H2H

■ TOV% 23 → 19

-4 TOV% points, ~6 points/game cumulative gain · #1 KPI of the season

■ ORtg 76.8 → 84

+7 offensive points · arrival of a 2nd scorer (15+ PPG)

■ MPOUDI back-to-back DPOY

Stocks 5.0+/40 sustained · candidate for the Lions Indomptables national team

PRIORITY DIAGNOSIS

Most negative luck factor in the league (-3.1 wins) · TOV% 24.4% OUTRIGHT WORST in the league · Pythagorean said 9 wins · #1 candidate for positive improvement in 2027

DAILY DRILLS

Technical & physical work

■ BALL DISCIPLINE — PRIORITY #1

1h30/day: decision-making under pressure, defensive reading, 2-ball drills · TOV% 24.4 → 19

■ END OF GAME (CLUTCH)

5v5 drills final 5 min · 3x/week · tied/+1/-1 scenarios · convert close scores — Lack of physical preparation to finish the games

■ EFFICIENT SHOOTING

EKOUMEDIMITHE post-game: 500 500 shots/day · NOULLA NGUITDAM mid-range: 600 00 shots/day

■ OFFENSIVE REBOUNDING (maintain)

ORB% 39.3 top-3 · offensive Tag drills · sustain the effort over 14 games

ROSTER MOVES & TACTICS

Signings and schemes

■ RELIABLE POINT GUARD

True PG at 6+ APG, AST/TO 2.5+ · solves the TOV problem at the source

■ 3-AND-D WING

Shooter at 36%+ 3pt · relieves EKOUMEDIMITHE of the creation load

■ PRESERVE THE CORE

Re-sign EKOUMEDI MITHE EKOUMEDI MITHE and NGUITDAM · they are undervalued

■ MENTAL COACH

Mental performance coach · turn bad luck into confidence

2027 GOALS

Measurable quantified KPIs

■ RETURN TO TOP-4

9-5 record minimum (+3 wins) · convert Pythagorean into actual wins

■ TOV% 24.4 → 19

5 TOV% points gained = ~7 extra points/game · absolute KPI

■ EKOUMEDI MITHE All-League

11.2 PIR/g → 13+ PIR/g · 14/14 games · deserving 2nd Team

■ DRtg 76.8 → 74

Complete a top-3 defense · added depth

PRIORITY DIAGNOSIS

DRtg 84.2 (worst defense in the top-7) · eFG% 35.9% (outright worst in the league) · Raw talent DJIPBOUONG 5 of 14 games = structural /injuries / absences

DAILY DRILLS

Technical & physical work

■ PRESERVING DJIPBOUONG

Adapted physical program · 1 day off after each game · load capped at 28 min/game

■ SHOT SELECTION

Shot-quality drills · eliminate long mid-range · 500 500 ZONE 3pt shots/day in-house league

■ INDIVIDUAL DEFENSE

1v1 drills 1h/day · defensive footwork · MOUATCHO must defend guards

■ TRANSITION DEFENSE

Get-back drills 30 reps/day · no easy transition baskets · opponent eFG% to reduce

ROSTER MOVES & TACTICS

Signings and schemes

■ RIM-PROTECTING CENTER

Big at 1.5+ BLK/g · defensive anchor · DJIPBOUONG doesn't defend the 5 5 alone

■ ELITE DEFENDER

Wing stopper · can switch 2 through 4 · turns the defense into a top-of-the-league unit

■ BACKUP FOR DJIPBOUONG

Forward at 12+ PPG · secures minutes when the talent is out

■ MEDICAL STAFF

Dedicated physiotherapist + nutritionist · no more injuries that destroy seasons

2027 GOALS

Measurable quantified KPIs

■ DJIPBOUONG 14/14 GAMES

Health = absolute priority · sustain the MVP-quality ceiling · 22+ PIR/g over a full season

■ DRtg 84.2 → 78

-6 DRtg points · immediate exit from the rebuild zone

■ RETURN TO PLAYOFFS

8-6 record or better · target top-6

■ MOUATCHO 16+ PPG

Confirm the All-League 2nd Team profile · take quality shots

PRIORITY DIAGNOSIS

DRB% 58.7% OUTRIGHT WORST in the league · 3P% 21.0% very weak · FTr 19.6% below average · Pace 84.0 leader without efficiency = disorganization

DAILY DRILLS

Technical & physical work

■ DEFENSIVE BOX-OUT — CRITICAL

1h/day defensive-rebound drills · 50 box-out reps · DRB% 58.7 → 65 = +5 wins immediately

■ TEAM 3PT SHOOTING

500 in-house league 3pt shots/day · MINLEND BASSOUGUE as priority · % 21 → 30

■ DRIVES & CONTACT

Rim-attacking drills · absorb contact, finish at the rim · draw fouls · FTr 19.6 → 25

■ CONTROLLED TEMPO

Pace 84 = too much · target 80 · half-court drills · quality > quantity of possessions

ROSTER MOVES & TACTICS

Signings and schemes

■ RIM-PROTECTING CENTER

Big at 1.5+ BLK and 8+ DRB/g · solves the DRB% problem in one signing

■ ELITE SHOOTER

3pt specialist (40%+) · spaces the floor for MINLEND BASSOUGUE

■ EXPERIENCED POINT GUARD

Veteran at 6+ APG, 2+ AST/TO · stabilizes the chaotic offense

■ IDENTITY COACH

Choose: pace-and-space team OR half-court grinding · stop the in-between

2027 GOALS

Measurable quantified KPIs

■ +5 WINS MINIMUM

4 → 9 wins · exit from the rebuild zone · target top-6

■ DRB% 58.7 → 65

+6 points · #1 absolute KPI · estimated gain of 4-5 wins just from this lever

■ 3P% 21 → 28

+7 3pt points · transforms the offense · MINLEND at 35% in the second half of the season

■ MINLEND All-League 2nd Team

11.4 → 14 PPG · iron man sustained 14/14 · scoring leader

PRIORITY DIAGNOSIS

Net Rating **-18.6** · 3 indicators worst in the league (eFG%, FTr, ORtg) · 1 win in 14 · END-OF-SEASON IMPROVEMENT TO BE CONFIRMED

DAILY DRILLS

Technical & physical work

■ OFFENSIVE FUNDAMENTALS

2h/day: footwork, finishing, mid-range · eFG% 33.8 catastrophic = a baseline problem
500 SHOTS PER DAY OUTSIDE AND INSIDE

■ POINT GUARD CREATIVITY

NGUIMKENG on defensive-reading drills · 100 100 pick-and-roll/day · true point guard

■ FOUL-DRAWING DRIVES

Contact + finishing drills · FTr 15.3 WORST in the league · earn the free-throw line

■ MENTAL & CULTURE

Mental performance coach · 13 consecutive losses

ROSTER MOVES & TACTICS

Signings and schemes

■ 50% ROSTER OVERHAUL

Keep MOUSSA ABDELSALAM and ERIC SIEGFRIED DEFFO · DEVELOP 7-8 PLAYERS high-level

■ CREATIVE POINT GUARD

ABSOLUTE PRIORITY: true PG at 7+ APG · without creation, no modern basketball

■ 2 RELIABLE SCORERS

Combo guards at 13-15 PPG, TS% 50%+ · fill the major offensive deficit

■ COACH

Cultural rebuild · long-term vision · accept a transition season

2027 GOALS

Measurable quantified KPIs

■ DOUBLE THE WINS

1 → 5 5 wins · embraced transition season · win at least 1 game/month

■ Net Rating -18.6 → -10

Reduce the gap by 8 points · exit the 'worst gap of the decade'

■ MOUSSA ABDELSALAM back-to-back Iron Man

14/14 games · 360+ minutes · symbol of continuity

■ ESTABLISH AN IDENTITY

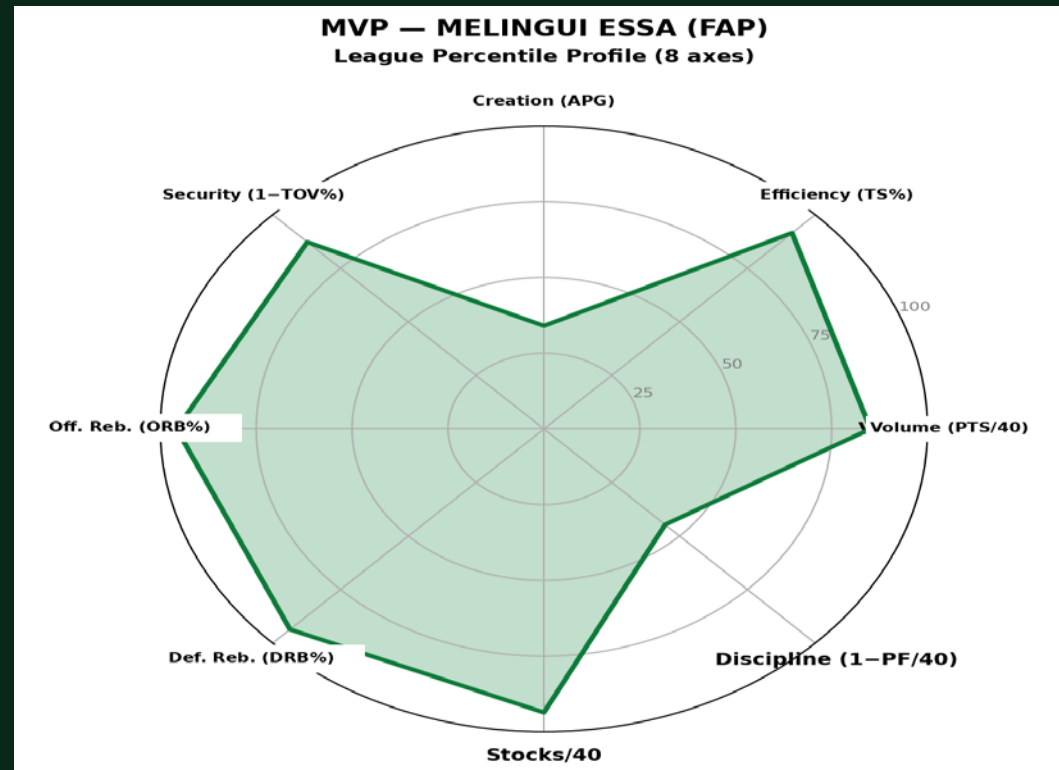
Choose a style (run-and-gun OR half-court defense) · coherence > short-term talent



CEDRIC PARFAIT

MELINGUI ESSA

F.A.P. Basketball · Center / Power Forward



12.6

PPG

10.5

RPG

1.0

APG

18.1

PIR/g

51.8%

TS%

13

Games

8 double-doubles · #1 Consistency in the league (2.12)
Big Game Index +5.3



My vote, and why

MY VOTE

MELINGUI ESSA

The criterion **VOLUME × IMPACT × DURATION.**

He plays more, does more, in more games than any other eligible player.

Backbone of a top-3 team (FAP, +102). 18.1 PIR/g — league record among players with ≥10 games. Real defensive impact — DPOY top-3.

ARGUABLE ALTERNATIVES

MIENNE EYENE (ALP)

Raw MVP_Score #1 (12.80) with 67.3% TS — historic efficiency. But 10 games, off the bench. 6MOY rather than MVP.

AYANGMA MOLEMB (ALP)

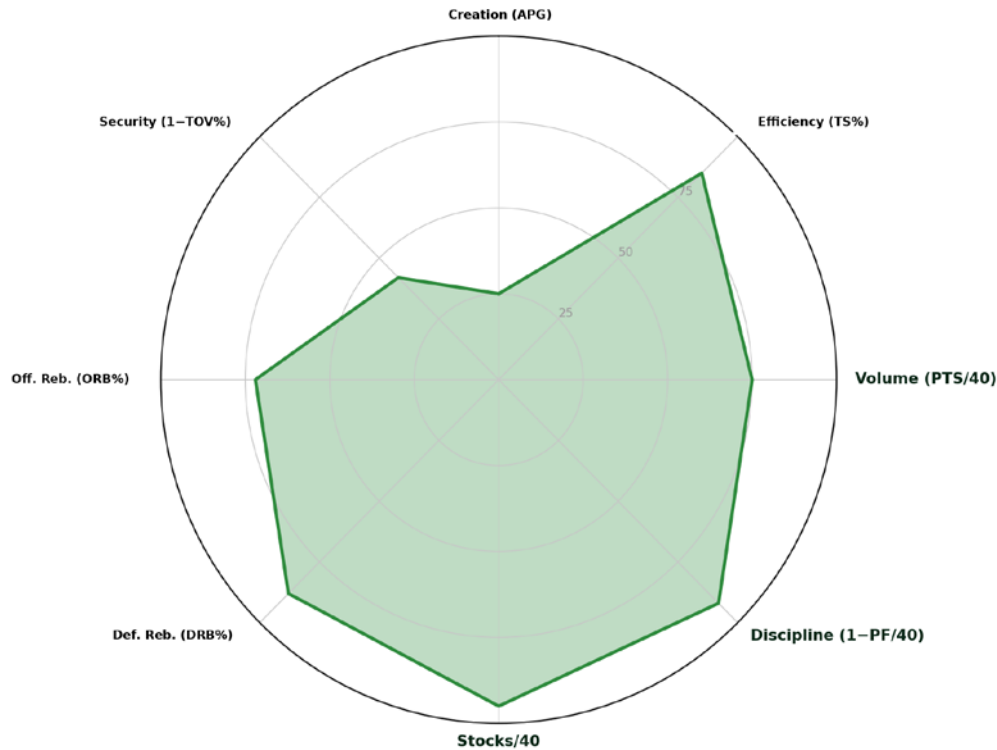
8.9/5.0/0.8 over 9 games, 55% TS, the silent soul of the runner-up. The all-around radar is more complete, less spectacular. 9 games = below the threshold.



MPOUDI EYAMBE — The mobile fortress



DPOY — MPOUDI EYAMBE (MCN)
League Percentile Profile



ANDRÉ JERÔME MARCEL MPOUDI EYAMBE

MC NOAH · Mobile center · 13 games

<p>2.41</p> <p>STL / 40</p>	<p>2.61</p> <p>BLK / 40</p>	<p>24.2%</p> <p>DRB %</p>
------------------------------------	------------------------------------	----------------------------------

« THE DEFENSIVE BAM ADEBAYO »

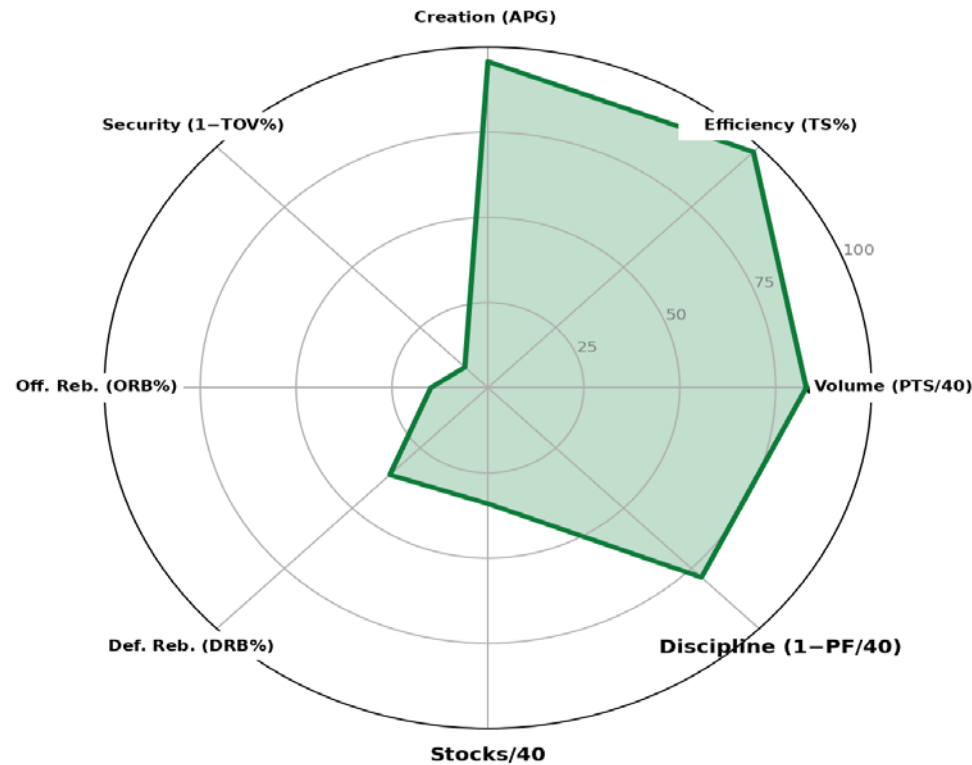
Stocks 5.02/40 — the rarest STL+BLK combination in the league. Center able to defend 5 positions. The undisputed DPOY and Lions Indomptables candidate for the 2026 A' squad.

DPOY_Score: 1.78 — first by a wide margin · BAL-Ready Score top-5



MIENNE EYENE — Historic efficiency

MVP Runner-up — MIENNE EYENE (ALP)
League Percentile Profile



BORIS LUDOVIC MIENNE EYENE

ALPH BBK YDÉ · Scoring guard · 10 games

67.3%

TRUE SHOOTING — OUTRIGHT #1 IN THE LEAGUE

10.6

PPG

3.0

APG

0/10

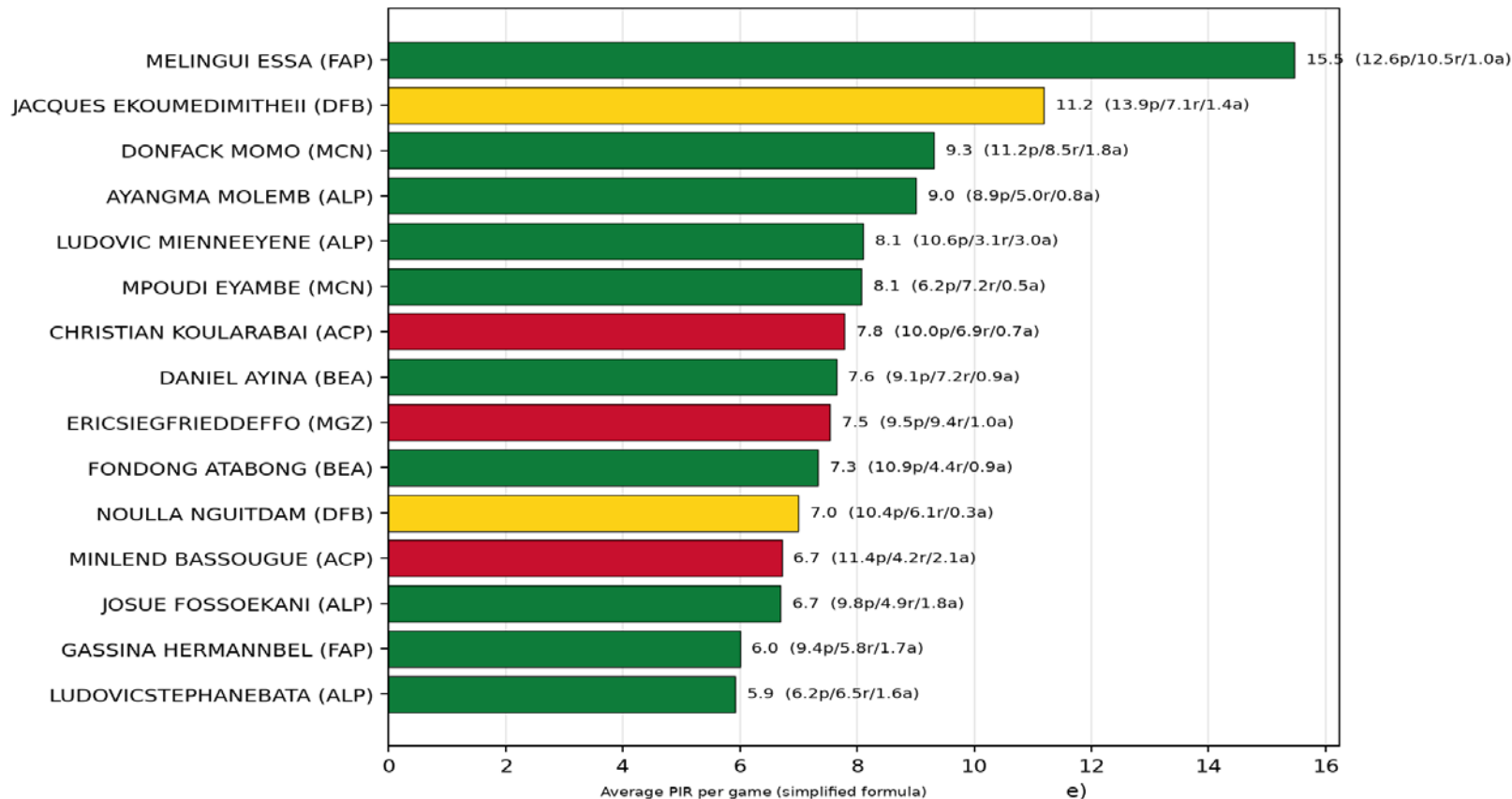
Starts

« The Cameroonian Lou Williams — off the bench, microwave, elite efficiency. The perfect 6MOY profile. »



Top PIR/g — Volume × Impact

LEADERS PIR (Performance Index Rating)
The signature FIBA international metric — average per game



READING

MELINGUI ESSA #1

at 18.1 PIR/g over 13 games — near-monopolistic dominance of volume.

DJIPBOUONG (EBB)

25.8 PIR/g over only 5 games — the highest individual ceiling in the league, stopped by injuries. structural .

Y.L. NGARANSOU (BEA)

Personal-record Eval 24 in MD12 (16p/14r) — emerging at the 4 over 8 games, top-10 ceiling in the league. To be confirmed in 2027.



Original YOUZOU ELITE ONE indices

CI

CAMEROONIAN INDEX

National team selection potential

FORMULA
 $0.30 \times GS + 0.25 \times \text{Two-Way} + 0.20 \times BGI + 0.15 \times \text{young} + 0.10 \times \text{Durab}$

TOP 3

- 1 MELINGUI ESSA
- 2 MIENNE EYENE
- 3 MPOUDI EYAMBE

BAL

BAL-READY SCORE

Expected Basketball Africa League performance

FORMULA
 $0.20 \times TS + 0.15 \times \text{BoxCr} + 0.15 \times \text{Stocks} + 0.10 \times \text{AST/TO} + \dots$

TOP 3

- 1 MIENNE EYENE
- 2 MELINGUI ESSA
- 3 AYANGMA MOLEMB

EXP

EXPORT SCORE

Foreign league potential (Maghreb · Europe-2)

FORMULA
 $0.25 \times GS + 0.20 \times \text{Versat} + 0.20 \times \text{3P} \times \text{vol} + 0.15 \times \text{FT} + \dots$

TOP 3

- 1 MELINGUI ESSA
- 2 EKOUMEDI MITHE II
- 3 DONFACK MOMO



The Cameroonian Passies — Creative awards

A fun touch inspired by The Ringer's model

★ IRON MAN

MOUSSA ABDELSALAM

MGZ

360 min over 14/14 games · Leader on every front

★ HEAT CHECK

B.J. NJIMOGNA GBETNKOM

MCN

29 PTS on 11/19 including 5/11 from 3pt vs ACP — season explosion

★ THE GLUE PLAYER

A.L. SIAKONANA

MCN

16p/8r/4a/2s vs MGZ — 8.7/3.6/2.3 over 13 games · the Swiss Army knife of MCN

★ MR RELIABLE

MELINGUI ESSA

FAP

8 double-doubles over 13 games — 2026 league record

★ THE SPECIALIST

FONDONG ATABONG

BEA

4/5 3PT (80%) vs ALP MD6 — BEA's title-run sniper

★ THE MAESTRO

B.Y. MOKAM

BEA

3.3 APG over 11 games — 2026 league passing leader

★ THE SNIPER

R. AMOU'OU AMBASSA

FAP

25 PTS including 7×3pt (volume record) vs ACP

★ MR TRIPLE THREAT

C. KOULARABAI

ACP

5 DDs over 14 games · 24p/14r vs EBB · balanced stat-line

★ HEART ATTACK

Y.D. DJIPBOUONG

EBB

Eval 39 league record (21p/25r vs MGZ) over 5 games · volatile talent



SIGNATURE CULTURAL AWARDS

The identity of the YOUZOU report · Tier 3 · Inspired by the BAL Ubuntu Trophy

★ TROPHY "OKALA" LEADERSHIP

Community impact and leadership

ERIC SIEGFRIED DEFFO

MGZ — Captain

13/14 games played as the lead center for a 1-13 team. 9.5 PPG/9.4 RPG · Leadership in defeat, the essence of an athlete who never lets up. A symbol of fight in a — very difficult season.

★ TROPHY "EDSON" YOUZOU ELITE

Tribute to the Cameroonian pillar — Best local product

C.P. MELINGUI ESSA

FAP — Center / Power Forward

Season MVP, 100% Cameroonian-trained, personal-record Eval 35, 18.1 PIR/g · The modern heir to the great Cameroonian center tradition. 8 double-doubles league record, 13/14 games.

★ PRIZE "JC NTEP" LIONS INDOMPTABLES

Best national-team candidate A' (A' Ready)

B.L. MIENNE EYENE

ALP — Explosive combo guard

Ideal selection profile: precision (TS% 67.3% league record), offensive versatility (10.6 PPG / 3 APG), scoring explosiveness · Deserving A' projection

★ TROPHY "MBAH A MOUTHE" YOUZOU PROSPECT

Best young player (potential <22 yrs)

B.J. NJIMOGNA GBETNKOM

MCN — Rookie combo guard

MVP of game MD? with 29 PTS including 5x3pt vs ACP · 11 PPG over 7 games in his first season · High ceiling, ability to score, modern 3-and-D profile — a clear promise of the future.



The finalists' weapons — 6MOY & Title MVP

B.L. Mienne Eyene (6MOY ALP) & Y.J. Fondong Atabong (Title MVP BEA)

ALP · ALPH BBK COMBO GUARD · 2026 6MOY A

Explosive weapon off the bench

MIENNE EYENE

★ **TS% 67.3% RECORD · CLUTCH OFF-BENCH**

67.3% <i>League-record TS%</i>	10.6 <i>PPG · 3 APG</i>	0/10 <i>Starts</i>
--	-----------------------------------	------------------------------

THE STORY:
Boris Ludovic Mienne Eyene is ALP's secret weapon. Historic 67.3% True Shooting over 10 games played, 0 starts but the impact of an elite starter. A perfect profile for the Lions Indomptables: precision + versatility (10.6/3.1/3.0) + clutch scoring ability. PIR/g 13.7. The best offensive efficiency in the league regardless of position — and he comes off the bench, YOUZOU 2026 6MOY winner.

COMP: *Our local Manu Ginobili — the fatal weapon that comes off the bench*

BEA · B.E.A.C. WING · MD14 TITLE MVP A-

Two-way wing · Clutch shooter

FONDONG ATABONG

★ **MD14 TITLE MVP · CLUTCH SHOOTER**

10.9 <i>PPG · 12 games</i>	21pts <i>/22 Eval final</i>	12.8 <i>PIR/g season</i>
--------------------------------------	---------------------------------------	------------------------------------

THE STORY:
Yann James Fondong Atabong wrote the most important page of BEA's season in MD14: 21 PTS / 22 eval / 4 made threes in the suffocating 58-55 final against EBB. His personal-best game (23 PTS / 4×3pt against ALP) confirmed his developing two-way wing profile. He embodies the profile BEA must develop for the 2027 BAL.

COMP: *B.E.A.C.'s Khris Middleton — clutch and understated*



MVP & 6MOY — the two architects of the game

C.P. Melingui Essa (MVP FAP) & B.L. Mienne Eyene (6MOY ALP)

FAP · F.A.P. CENTER/PF · YOUZOU 2026 MVP
A+

Dominant engine · King of the boards

MELINGUI ESSA

★ **STATISTICAL MVP · DOUBLE-DOUBLE MACHINE**

12.6 <small>PPG · 10.5 RPG</small>	18.1 <small>Record PIR/g</small>	8 DD <small>league record</small>
---	---	--

THE STORY:
 Cedric Parfait Melingui Essa redefined the YOUZOU 2026 center standard. King of offensive rebounding (FAP ORB% 41.3% league record), 8 double-doubles over 13 games (league record), 18.1 PIR/g — undisputed statistical MVP. Eval 35 against BEA (24p/14r), a complete center able to score with his back to the basket and facing it. Without a Stretch Big at his side, FAP didn't convert his talent into a title — which speaks to his individual brilliance.

COMP: *L*Tireless interior engine

ALP · ALPH BBK COMBO GUARD · 2026 6MOY
A

Explosive weapon off the bench

MIENNE EYENE

★ **TS% 67.3% RECORD · CLUTCH OFF-BENCH**

67.3% <small>League-record TS%</small>	10.6 <small>PPG · 3 APG</small>	0/10 <small>Starts</small>
---	--	---

THE STORY:
 Boris Ludovic Mienne Eyene is ALP's secret weapon. Historic 67.3% True Shooting over 10 games played, 0 starts but the impact of an elite starter. A perfect profile for the Lions Indomptables: precision + versatility (10.6/3.1/3.0) + clutch scoring ability. PIR/g 13.7. The best offensive efficiency in the league regardless of position — and he comes off the bench.

COMP: *O*ur local Manu Ginobili — the fatal weapon that comes off the bench

DPOY & DFB engine — the defensive and two-way pillars

A.J.M. Mpoudi Eyambe (DPOY MCN) & J. Ekoumedi mithe II (DFB)

MCN · MC NOAH MOBILE CENTER · 2026 DPOY **A**

Mobile fortress · 5-position defender

MPOUDI EYAMBE

★ STOCKS 5.02/40 · OUTRIGHT LEAGUE RECORD

2.41 STL/40	2.61 BLK/40	24.2% DRB%
----------------	----------------	---------------

THE STORY:
André Jérôme Marcel Mpoudi Eyambe is MCN's mobile fortress. The rare STL+BLK Stocks combination of 5.02/40 (outright league record), DRB% 24.2% top-3 in the league, able to defend 5 positions from #1 to #5. A versatile modern profile — exactly the type of center the BAL is looking for. The pillar on which MCN must build their 2027 progress and a Lions Indomptables national-team future.

COMP: The defensive Bam Adebayo — rim protection + perimeter switching

DFB · DLA FORCE POWER FORWARD · ALL-LEAGUE 2 **A-**

Stat-stuffer · Quiet offensive engine

EKOUME DIMITHE II

★ 13.9 PPG · 7.1 RPG · 11.2 PIR/g

13.9 PPG · 7.1 RPG	11.2 PIR/g top-5	Eval 32 best · 4 cats ≥4
-----------------------	---------------------	-----------------------------

THE STORY:
Jacques Ekoumedi mithe II is DFB's quiet offensive engine. 13.9 PPG / 7.1 RPG / 11.2 PIR/g over 11 games — deserving All-League 2nd Team. A genuine stat-stuffer: 13p/7r/2a/6s/3b vs EBB (4 categories ≥4). 23 PTS season-high vs ACP. Undervalued because of DFB's playoff absence, but the positive 2027 regression (Pythagorean projected 9 wins) will put him in the spotlight.

COMP: The local Pascal Siakam — modern offensive versatility



YOUZOU 2026 HALL OF FAME



MVP

**MELINGUI
ESSA**

FAP

*8 double-doubles · 18.1
PIR/g*



DPOY

**MPOUDI
EYAMBE**

MCN

Stocks 5.02/40



6MOY

MIENNE EYENE

ALP

TS% 67.3% — historic



TITLE MVP

**FONDONG
ATABONG**

BEA

21 pts/22 eval final



IRON MAN

**MOUSSA
ABDELSALAM**

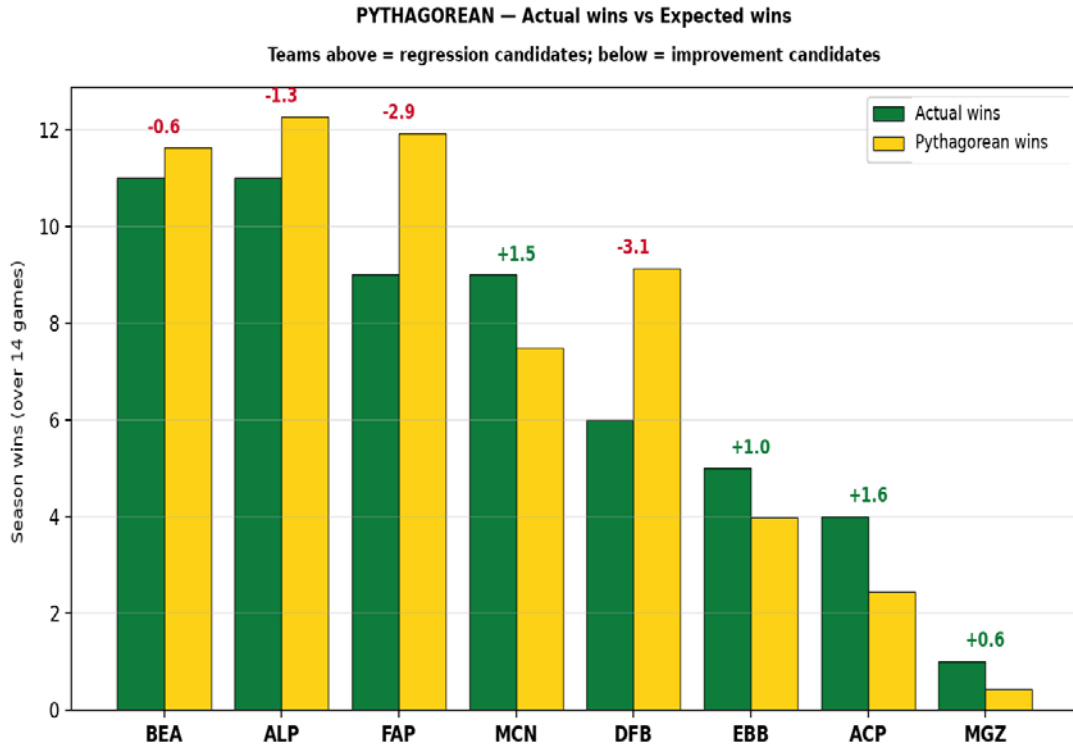
MGZ

360 min · 14/14 games

"I am because we are" — YOUZOU OBAH Trophy awarded to Coach Kevin NGWESE (BEA)



Looking Ahead — 2027 Season



Actual wins vs Pythagorean wins — reveals luck/bad luck.

2027 BREAKOUT CANDIDATES

- FONDONG ATABONG** · BEA · MD14 Title MVP, developing two-way profile
- MOUATCHO TCHIENCHEU** · EBB · 13.3 PPG over 11 games — deserving All-League 2nd Team
- DJIPBOUONG** · EBB · 25.8 PIR/g over 5 games before injury
- NDJEPENDA PAMGA** · EBB · 7-game sample · top-15 ceiling in the league
- NGUIMKENG** · MGZ · 6 AST in MD14 — pure creation
- MINLEND BASSOUGUE** · ACP · 11.4 PPG iron man on the worst team

DFB #1 candidate for positive regression (Pythagorean projected 9 wins, +3 wins expected) · MGZ and ACP must rebuild



The absence of the Stretch Big

The league's most striking analytical signature.

0

YOUZOU 2026 PLAYER

combines ≥ 6 RPG + $3P\% \geq 24\%$ + sufficient 3PA volume

WHAT THIS MEANS

No modern center able to stretch the floor. Elite One's #1 tactical edge has yet to be invented.

TACTICAL OPPORTUNITY # 1

Signing or developing a Stretch Big will provide the most durable structural competitive advantage of the decade.



Methodology · Sources · Credits

56

Games played (full season)

54

Full box scores archived

195

Unique players identified

18

Visualizations generated

17

Sections in the full report

7,664

Words in the Word document

METHODOLOGY

Dean Oliver (Four Factors) · **Daryl Morey** (Moreyball) · **Ben Taylor** (Box Creation) · **Ken Pomeroy** (Pythagorean, Luck factor) · **The Ringer** (awards format) · **YOUZOU Elite One Handbook** (24-page operational reference)

Note: 2 MD1 box scores (Jan. 10, 2026) with partial archives — MCN 74-60 EBB and ALP 60-53 FAP — official scores included in the report; detailed stats for those 2 games estimated from season averages.

FECABASKET 2027 RECOMMENDATION

Adoption of FIBA LiveStats — immediate unlocking of play-by-play, on/off, lineup ratings, shot charts.



GLOSSARY

Abbreviations & anglicisms in the YOUZOU Elite One 2026 document

■ TEAMS & INSTITUTIONS

BEA = B.E.A.C. Basketball (2026 champion)
ALP = ALPH BBK Yaoundé (runner-up)
FAP = Forces Armées Populaires Basketball
MCN = MC NOAH
DFB = Douala Force Basketball / Fire Birds
EBB = École de Basketball
ACP = ACPBA
MGZ = MAGZI Basketball
YDÉ = Yaoundé · **BBK** = Basketball
FECABASKET = Cameroonian Basketball Federation
DTN = National Technical Director
BAL = Basketball Africa League
FIBA = International Basketball Federation
NBA / NCAA = US pro / college leagues

■ AWARDS & DISTINCTIONS

MVP = Most Valuable Player
DPOY = Defensive Player of the Year
6MOY = Sixth Man of the Year
All-League 1st/2nd Team = League selection
Hall of Fame = Pantheon of legends
Iron Man = Tireless player (every game)
H2H = Head-to-Head
KPI = Key Performance Indicator

■ BASIC STATISTICS

PPG / RPG / APG = Points / Rebounds / Assists per game
STL / BLK = Steals / Blocks
TOV = Turnovers
ORB / DRB = Offensive / defensive rebounds
DD = Double-Double (10+ in 2 stats)
EV / Eval = FIBA Evaluation
FT / 3pts (3PT) = Free Throw / 3-Point Shots
FGM / FTA = Field Goals Made / Free Throw Attempts

■ ADVANCED STATISTICS

PIR = Performance Index Rating (FIBA)
TS% = True Shooting % (weighted real shooting %)
eFG% = Effective Field Goal % (2/3 pt weighted)
ORtg / DRtg = Off./def. ratings (pts/100 poss.)
Net Rating = ORtg – DRtg (differential)
Pace = Tempo (possessions / 40 min)
PPP = Points Per Possession
Four Factors = eFG% / TOV% / ORB% / FTr (Dean Oliver)
FTr = Free Throw Rate (foul-drawing rate)
AST/TO = Assists-to-turnovers ratio
Stocks = STL + BLK (overall defensive impact)
Pythagorean Wins = Theoretical wins (Pomeroy)
Luck factor = Actual wins – Pythagorean (luck)
Box Creation (BoxCr) = Offensive creation (Ben Taylor)
BGI / CI / EXP = YOUZOU indices (Big Game / Cameroonian / Export)

■ TIER LIST & STANDINGS

Tier list = Tiered ranking (S/A/B/C/D)
Power Rankings = Strength rankings
Title Contenders = Title candidates
Dark Horses / Bubble = Outsiders / Playoff bubble
Rebuild / Lottery = Rebuild / Bottom of standings

■ POSITIONS & PLAYER PROFILES

PG / Combo Guard / Big Man = Point Guard / Guard / Big
Stretch Big = Center able to shoot 3pt
Two-Way / 3-and-D = Complete off./def. player / defensive shooter
Rim Protector / Wing Stopper = Rim protector / Wing defender
Closer / Roll Man / Glue Player = Clutch / Screen roll player / Connector
Microwave / Stat-stuffer = Burst scorer / Multi-stat profile

■ SCHEMES & VOCABULARY

Pick-and-Roll (PnR) / Pick-and-Pop = Screen-roll / Screen-pop
Catch-and-Shoot = Catch-shoot (no dribble)
Switch / Drop / Blitz = Defensive screen coverages
Spacing / Driving Lanes = Floor spacing / Driving lanes
Pace-and-Space / Run-and-Gun = Fast play + spacing
Half-Court / Box-out / Outlet Pass = Set offense / Rebound positioning / Outlet pass
Clutch / Sample = Decisive end of game / Sample
Bench / Roster / Backup = Bench / Roster / Backup
Drills / Breakout / Mid-range = Exercises / Breakout / Mid-range shot



THANK YOU

YOUZOU ELITE ONE · 2026 SEASON

"World-class analytical reporting in service of Cameroonian basketball."

FECABASKET DTN L. TSOUNGUI · YOUZOU Analytics · 2026